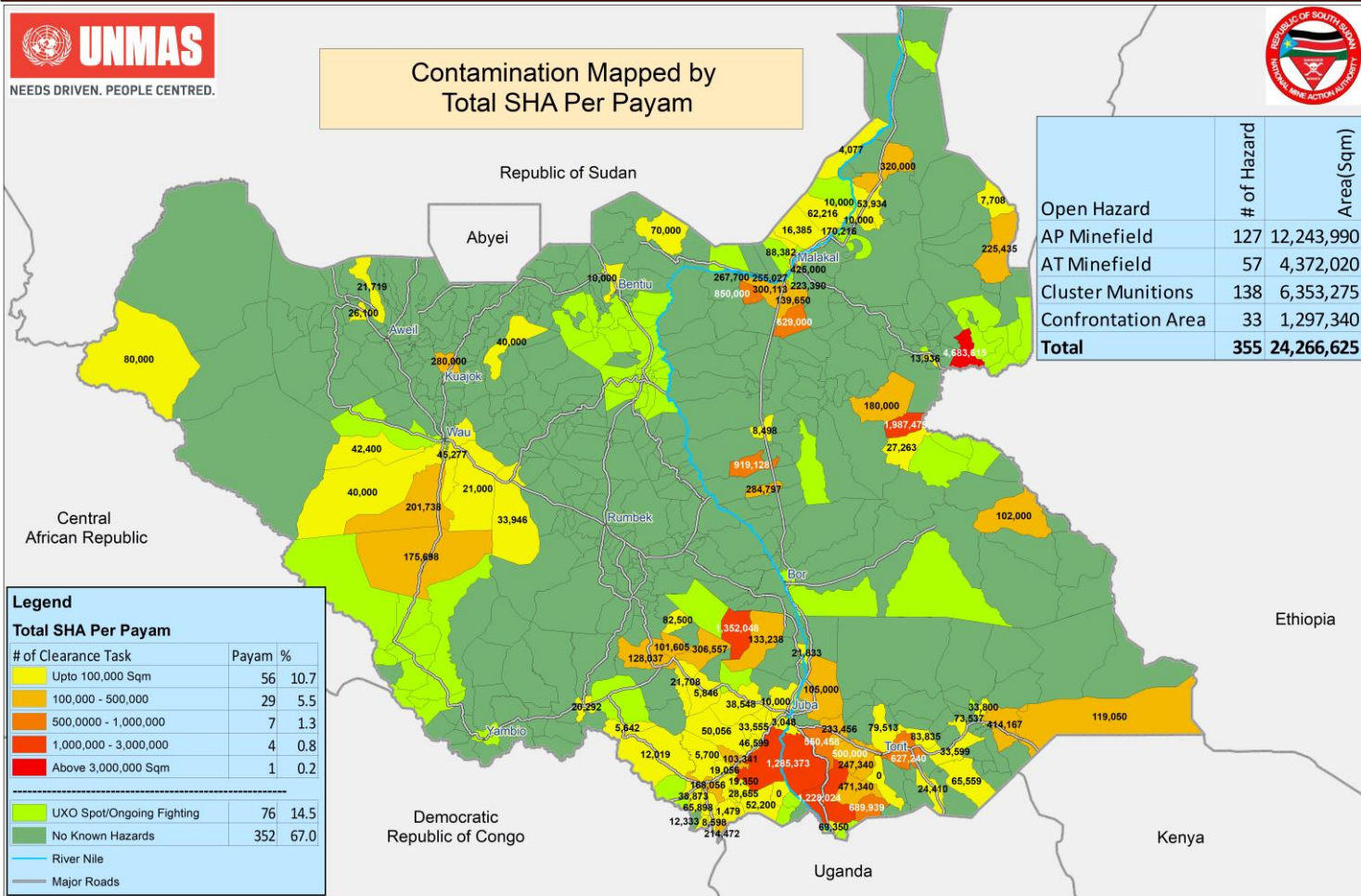


Open Hazardous Areas in South Sudan as of 31 October 2019



Contamination Mapped by Total SHA Per Payam



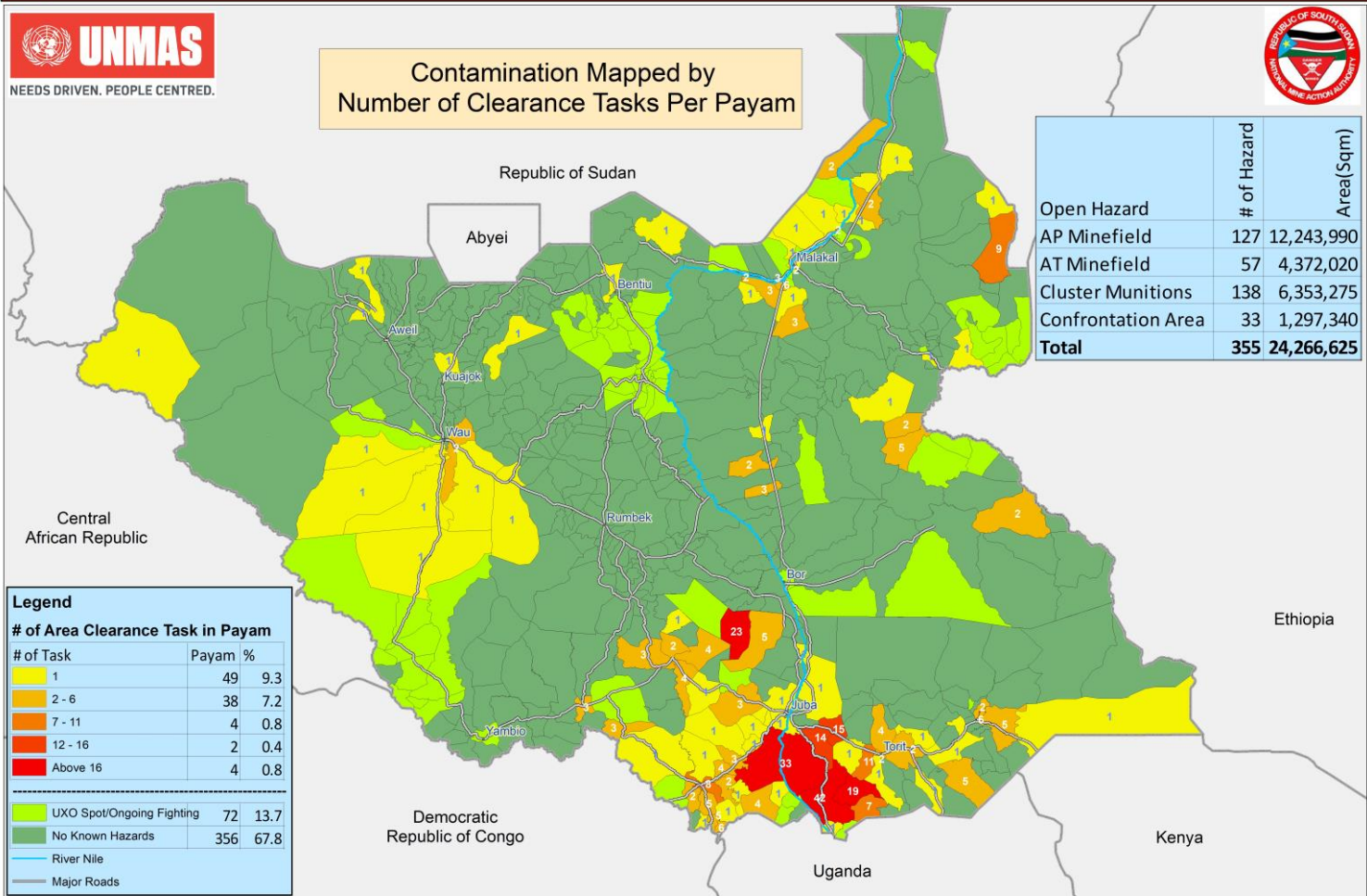
	# of Hazard	Area(Sqrm)
Open Hazard		
AP Minefield	127	12,243,990
AT Minefield	57	4,372,020
Cluster Munitions	138	6,353,275
Confrontation Area	33	1,297,340
Total	355	24,266,625

Legend		
Total SHA Per Payam		
# of Clearance Task	Payam	%
Upto 100,000 Sqm	56	10.7
100,000 - 500,000	29	5.5
500,000 - 1,000,000	7	1.3
1,000,000 - 3,000,000	4	0.8
Above 3,000,000 Sqm	1	0.2
<hr/>		
UXO Spot/Ongoing Fighting	76	14.5
No Known Hazards	352	67.0
<hr/>		
River Nile		
Major Roads		

Open Hazardous Areas in South Sudan as of 31 October 2019



Contamination Mapped by Number of Clearance Tasks Per Payam



Open Hazard	# of Hazard	Area(Sqm)
AP Minefield	127	12,243,990
AT Minefield	57	4,372,020
Cluster Munitions	138	6,353,275
Confrontation Area	33	1,297,340
Total	355	24,266,625

Legend		
# of Area Clearance Task in Payam		
# of Task	Payam	%
1	49	9.3
2 - 6	38	7.2
7 - 11	4	0.8
12 - 16	2	0.4
Above 16	4	0.8
<hr/>		
UXO Spot/Ongoing Fighting	72	13.7
No Known Hazards	356	67.8
<hr/>		
River Nile		
Major Roads		