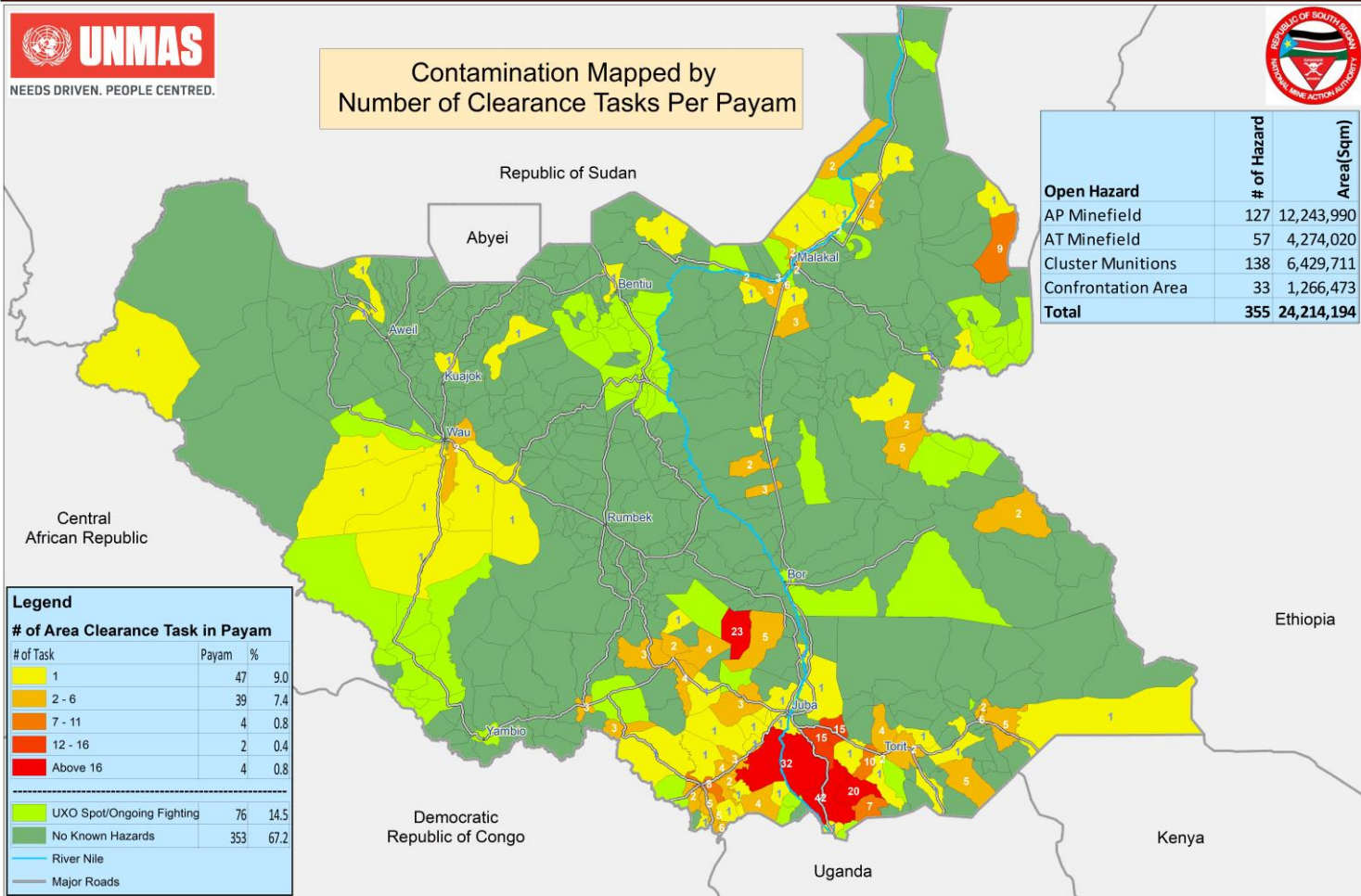


Open Hazardous Areas in South Sudan as of 30 November 2019



Contamination Mapped by
Number of Clearance Tasks Per Payam



Open Hazard	# of Hazard	Area(Sqkm)
AP Minefield	127	12,243,990
AT Minefield	57	4,274,020
Cluster Munitions	138	6,429,711
Confrontation Area	33	1,266,473
Total	355	24,214,194

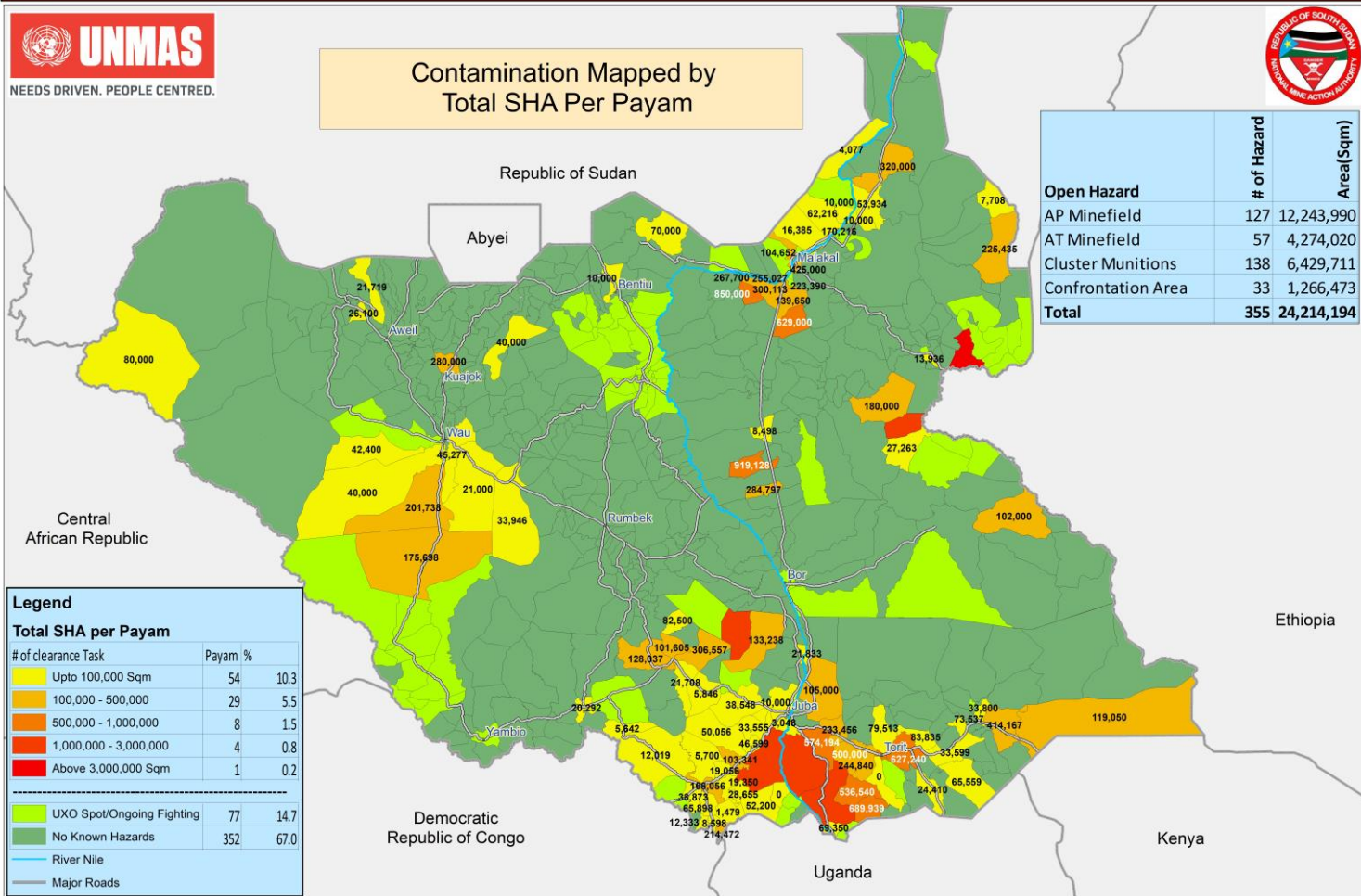
Legend

# of Area Clearance Task in Payam		
# of Task	Payam	%
1	47	9.0
2 - 6	39	7.4
7 - 11	4	0.8
12 - 16	2	0.4
Above 16	4	0.8
<hr/>		
UXO Spot/Ongoing Fighting	76	14.5
No Known Hazards	353	67.2
<hr/>		
River Nile		
Major Roads		

Open Hazardous Areas in South Sudan as of 30 November 2019



Contamination Mapped by Total SHA Per Payam



Open Hazard	# of Hazard	Area(Sqkm)
AP Minefield	127	12,243,990
AT Minefield	57	4,274,020
Cluster Munitions	138	6,429,711
Confrontation Area	33	1,266,473
Total	355	24,214,194

Legend		
Total SHA per Payam		
# of clearance Task	Payam	%
Upto 100,000 Sqm	54	10.3
100,000 - 500,000	29	5.5
500,000 - 1,000,000	8	1.5
1,000,000 - 3,000,000	4	0.8
Above 3,000,000 Sqm	1	0.2
<hr/>		
UXO Spot/Ongoing Fighting	77	14.7
No Known Hazards	352	67.0
<hr/>		
River Nile		
Major Roads		