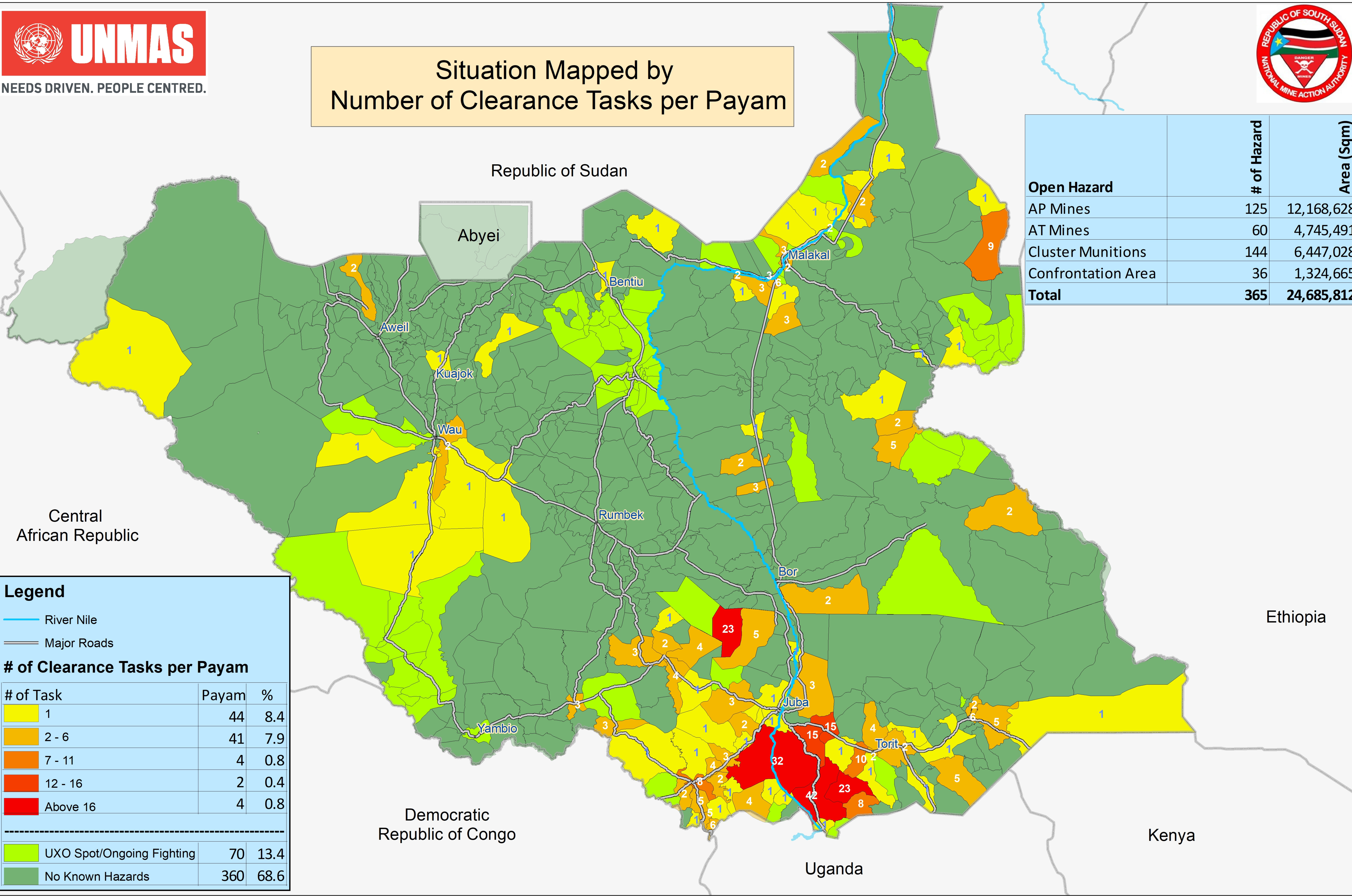


Open Hazardous Areas in South Sudan as of 31 January 2020



Situation Mapped by Number of Clearance Tasks per Payam



Open Hazard	# of Hazard	Area (Sqkm)
AP Mines	125	12,168,628
AT Mines	60	4,745,491
Cluster Munitions	144	6,447,028
Confrontation Area	36	1,324,665
Total	365	24,685,812

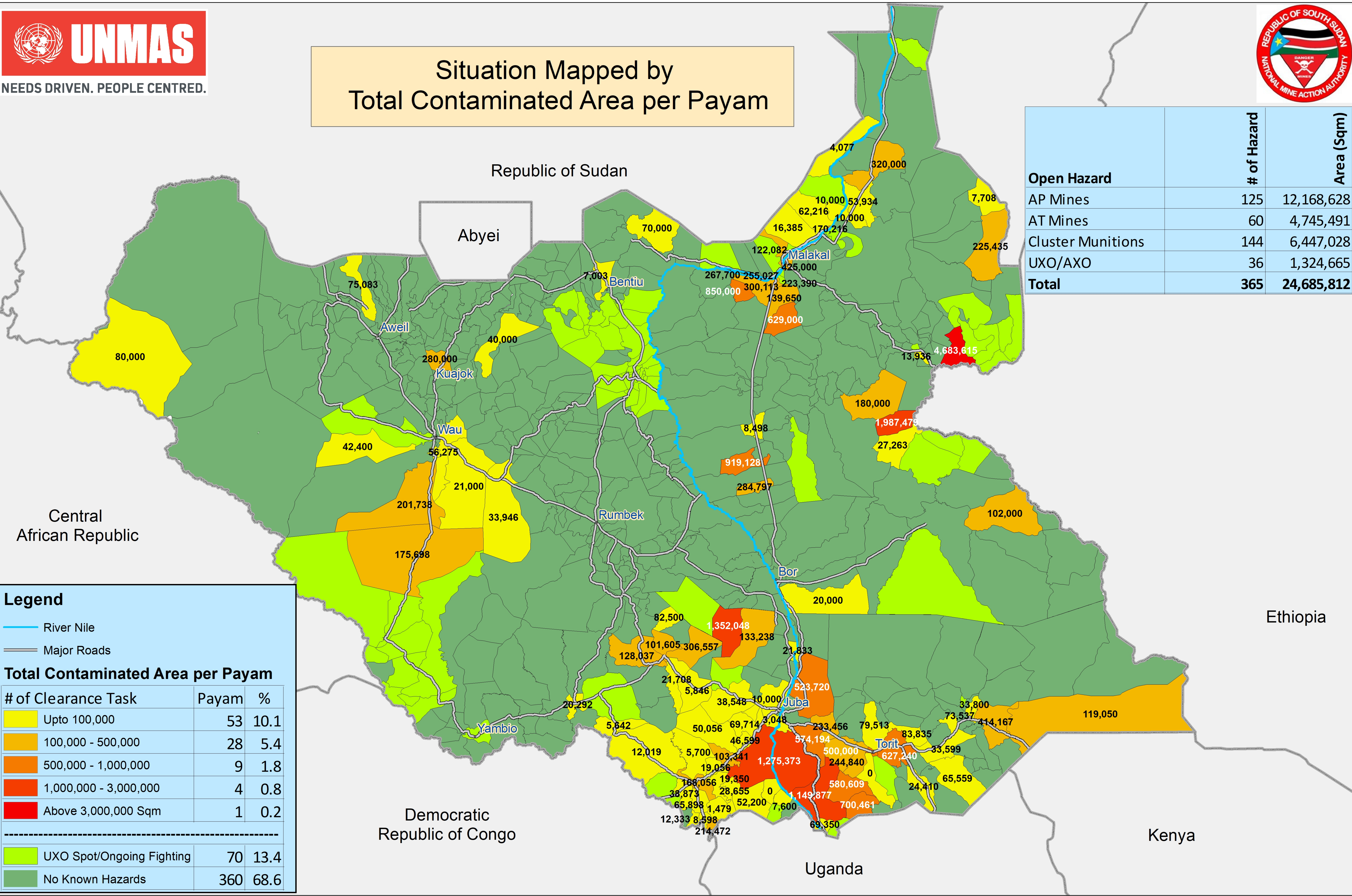
Legend		
	River Nile	
	Major Roads	
# of Clearance Tasks per Payam		
# of Task	Payam	%
	44	8.4
	41	7.9
	4	0.8
	2	0.4
	4	0.8

	70	13.4
	360	68.6

Open Hazardous Areas in South Sudan as of 31 January 2020



Situation Mapped by
Total Contaminated Area per Payam



Open Hazard	# of Hazard	Area (Sqm)
AP Mines	125	12,168,628
AT Mines	60	4,745,491
Cluster Munitions	144	6,447,028
UXO/AXO	36	1,324,665
Total	365	24,685,812

Legend

- River Nile
- Major Roads

Total Contaminated Area per Payam

# of Clearance Task	Payam	%
Upto 100,000	53	10.1
100,000 - 500,000	28	5.4
500,000 - 1,000,000	9	1.8
1,000,000 - 3,000,000	4	0.8
Above 3,000,000 Sqm	1	0.2

UXO Spot/Ongoing Fighting	70	13.4
No Known Hazards	360	68.6