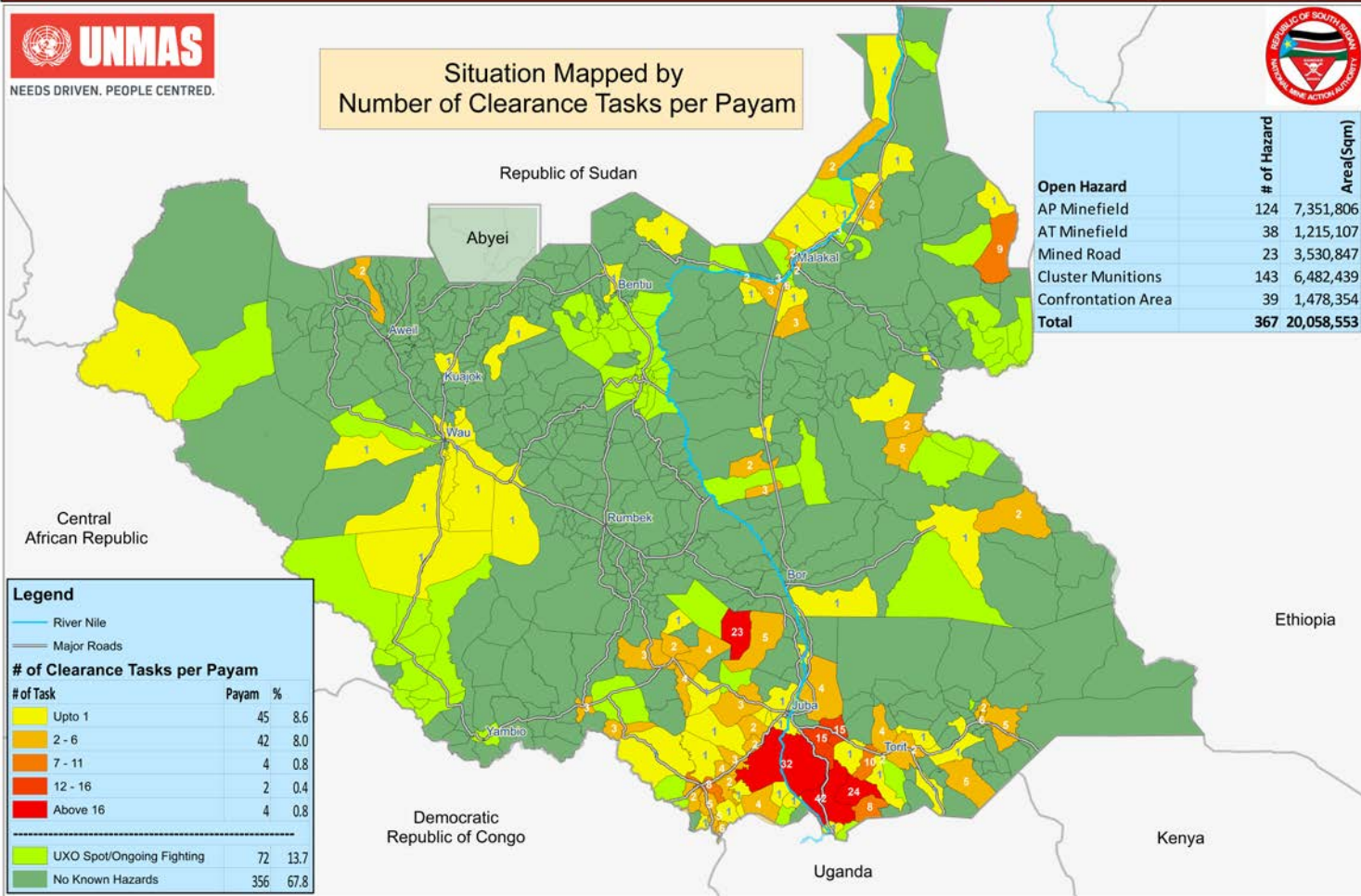


Open Hazardous Areas in South Sudan as of 29 February 2020



Situation Mapped by Number of Clearance Tasks per Payam



Open Hazard	# of Hazard	Area(Sqkm)
AP Minefield	124	7,351,806
AT Minefield	38	1,215,107
Mined Road	23	3,530,847
Cluster Munitions	143	6,482,439
Confrontation Area	39	1,478,354
Total	367	20,058,553

Legend

- River Nile
- Major Roads

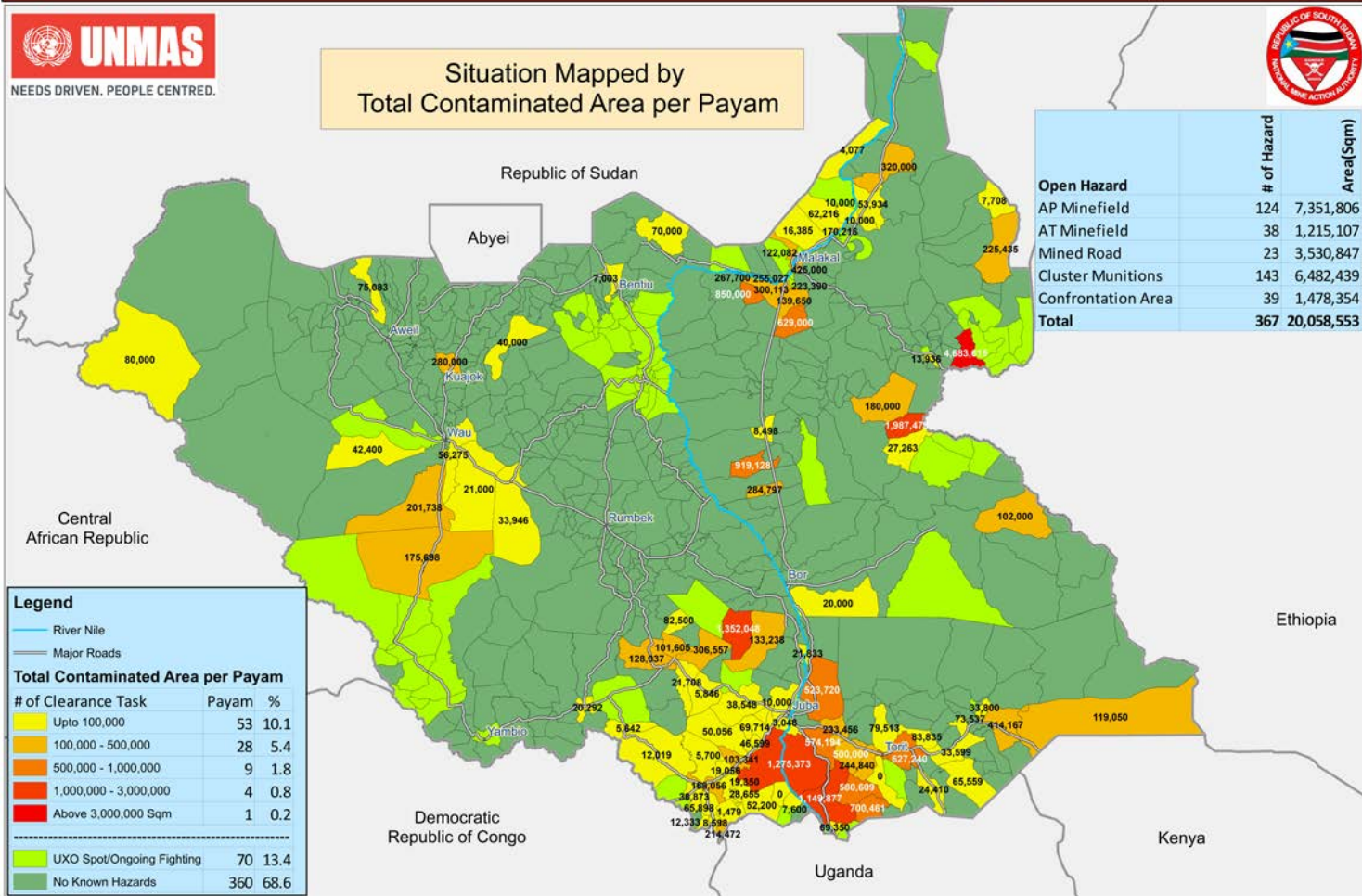
# of Task	Payam	%
Upto 1	45	8.6
2 - 6	42	8.0
7 - 11	4	0.8
12 - 16	2	0.4
Above 16	4	0.8

UXO Spot/Ongoing Fighting	72	13.7
No Known Hazards	356	67.8

Open Hazardous Areas in South Sudan as of 29 February 2020



Situation Mapped by Total Contaminated Area per Payam



Open Hazard	# of Hazard	Area(Sqrm)
AP Minefield	124	7,351,806
AT Minefield	38	1,215,107
Mined Road	23	3,530,847
Cluster Munitions	143	6,482,439
Confrontation Area	39	1,478,354
Total	367	20,058,553

Legend

- River Nile
- Major Roads

Total Contaminated Area per Payam

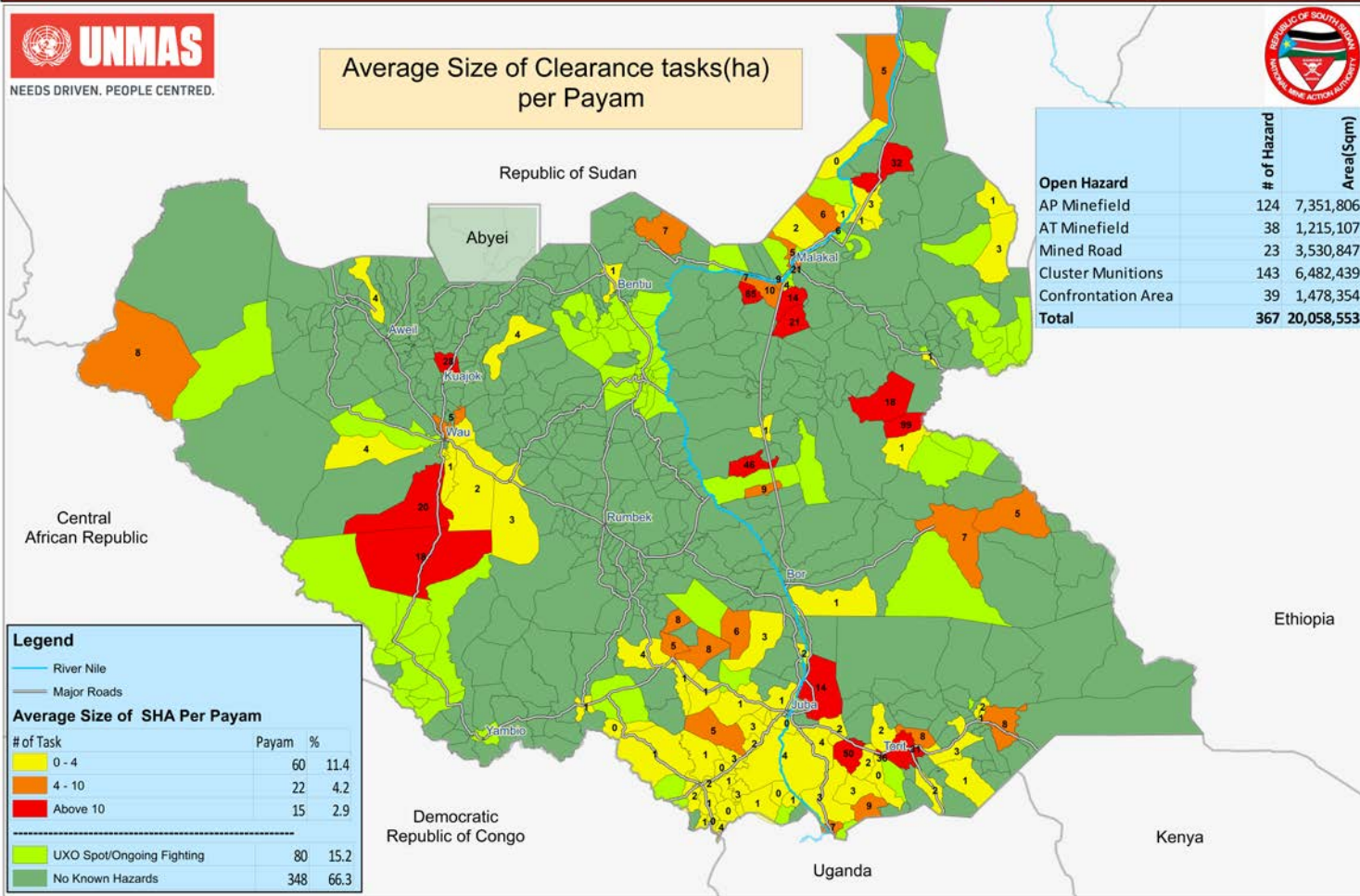
# of Clearance Task	Payam	%
Upto 100,000	53	10.1
100,000 - 500,000	28	5.4
500,000 - 1,000,000	9	1.8
1,000,000 - 3,000,000	4	0.8
Above 3,000,000 Sqm	1	0.2

UXO Spot/Ongoing Fighting	70	13.4
No Known Hazards	360	68.6

Open Hazardous Areas in South Sudan as of 29 February 2020



Average Size of Clearance tasks(ha) per Payam



	# of Hazard	Area(Sqm)
Open Hazard	124	7,351,806
AP Minefield	38	1,215,107
AT Minefield	23	3,530,847
Mined Road	143	6,482,439
Cluster Munitions	39	1,478,354
Total	367	20,058,553

Legend

- River Nile
- Major Roads

Average Size of SHA Per Payam

# of Task	Payam	%
0 - 4	60	11.4
4 - 10	22	4.2
Above 10	15	2.9
<hr/>		
UXO Spot/Ongoing Fighting	80	15.2
No Known Hazards	348	66.3