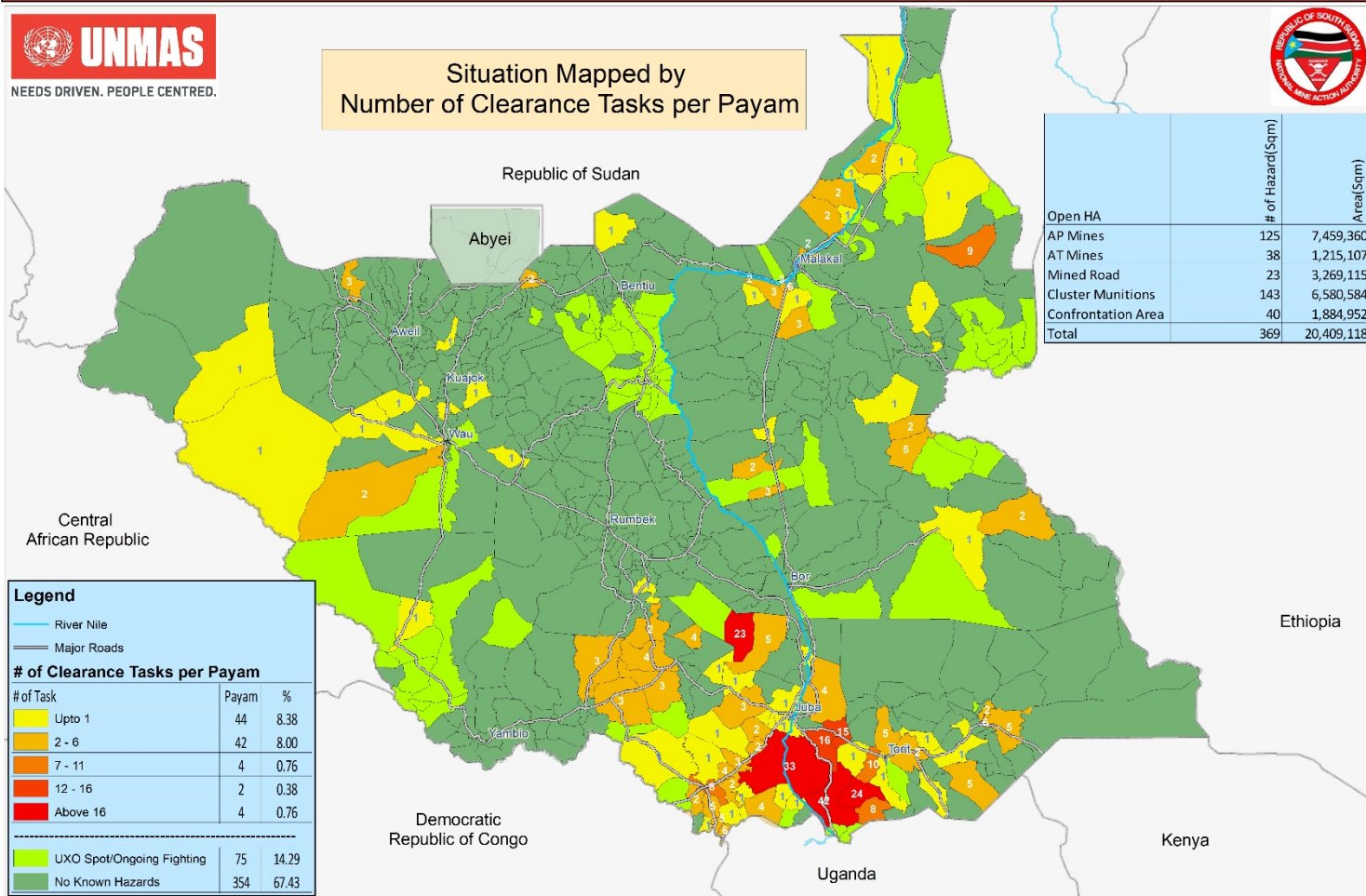


Open Hazardous Areas in South Sudan as of 31 March 2020



Situation Mapped by
Number of Clearance Tasks per Payam



	# of Hazard (Sqkm)	Area (Sqkm)
Open HA		
AP Mines	125	7,459,360
AT Mines	38	1,215,107
Mined Road	23	3,269,115
Cluster Munitions	143	6,580,584
Confrontation Area	40	1,884,952
Total	369	20,409,118

Legend

- River Nile
- Major Roads

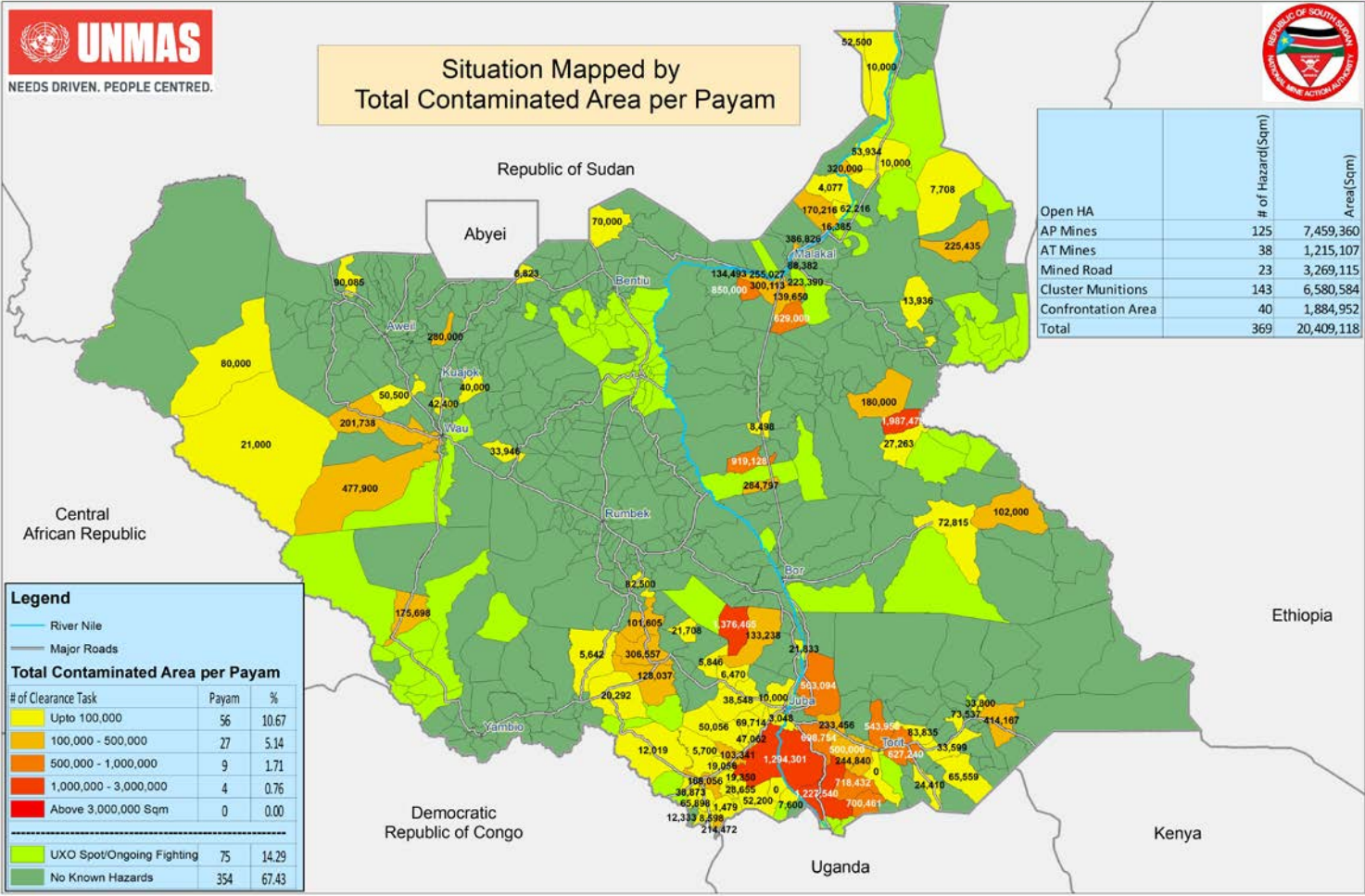
# of Task	Payam	%
Upto 1	44	8.38
2 - 6	42	8.00
7 - 11	4	0.76
12 - 16	2	0.38
Above 16	4	0.76

UXO Spot/Ongoing Fighting	75	14.29
No Known Hazards	354	67.43

Open Hazardous Areas in South Sudan as of 31 March 2020



Situation Mapped by
Total Contaminated Area per Payam



	# of Hazard(Sqm)	Area(Sqm)
Open HA	125	7,459,360
AP Mines	38	1,215,107
Mined Road	23	3,269,115
Cluster Munitions	143	6,580,584
Confrontation Area	40	1,884,952
Total	369	20,409,118

Legend

- River Nile
- Major Roads

Total Contaminated Area per Payam

# of Clearance Task	Payam	%
Upto 100,000	56	10.67
100,000 - 500,000	27	5.14
500,000 - 1,000,000	9	1.71
1,000,000 - 3,000,000	4	0.76
Above 3,000,000 Sqm	0	0.00

UXO Spot/Ongoing Fighting	75	14.29
No Known Hazards	354	67.43

Open Hazardous Areas in South Sudan as of 31 March 2020



Average Size of Clearance tasks(ha) per Payam

