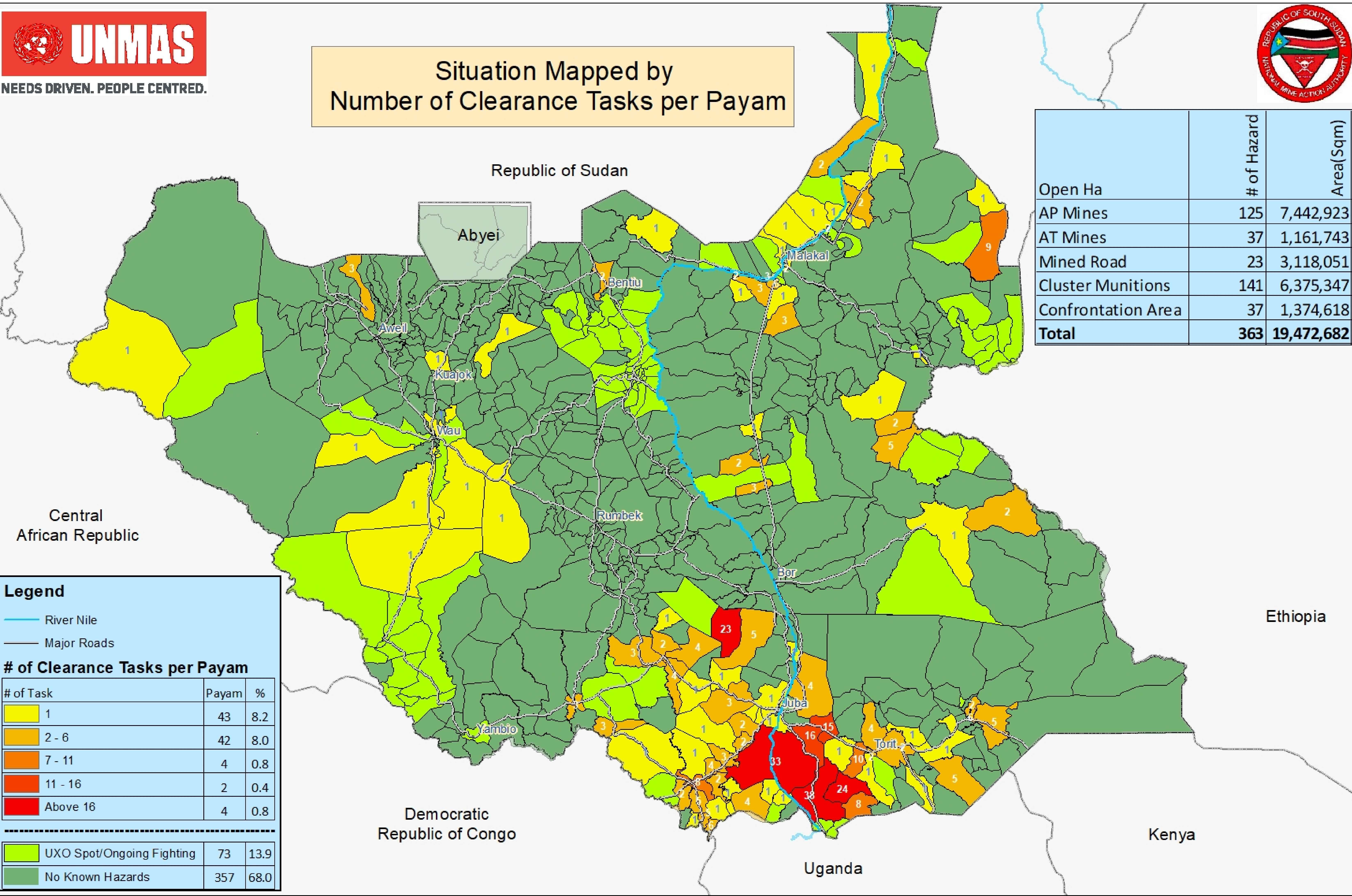


Open Hazardous Areas in South Sudan as of 30 April 2020



Situation Mapped by Number of Clearance Tasks per Payam



Open Ha	# of Hazard	Area(Sqm)
AP Mines	125	7,442,923
AT Mines	37	1,161,743
Mined Road	23	3,118,051
Cluster Munitions	141	6,375,347
Confrontation Area	37	1,374,618
Total	363	19,472,682

Legend

- River Nile
- Major Roads

of Clearance Tasks per Payam

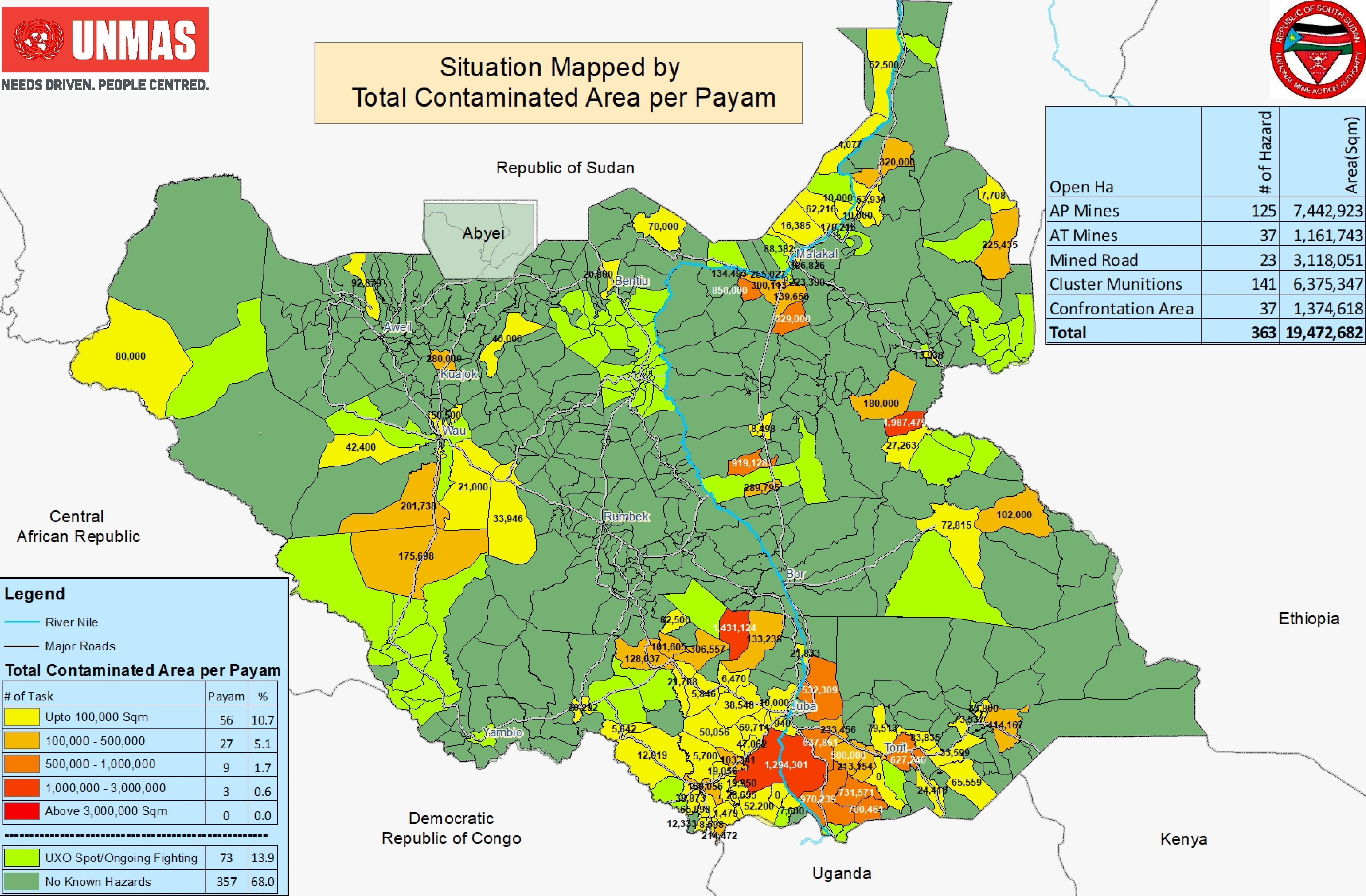
# of Task	Payam	%
1	43	8.2
2 - 6	42	8.0
7 - 11	4	0.8
11 - 16	2	0.4
Above 16	4	0.8

UXO Spot/Ongoing Fighting	73	13.9
No Known Hazards	357	68.0

Open Hazardous Areas in South Sudan as of 30 April 2020



Situation Mapped by Total Contaminated Area per Payam



Open Ha	# of Hazard	Area(Sqm)
AP Mines	125	7,442,923
AT Mines	37	1,161,743
Mined Road	23	3,118,051
Cluster Munitions	141	6,375,347
Confrontation Area	37	1,374,618
Total	363	19,472,682

Legend

- River Nile
- Major Roads

Total Contaminated Area per Payam

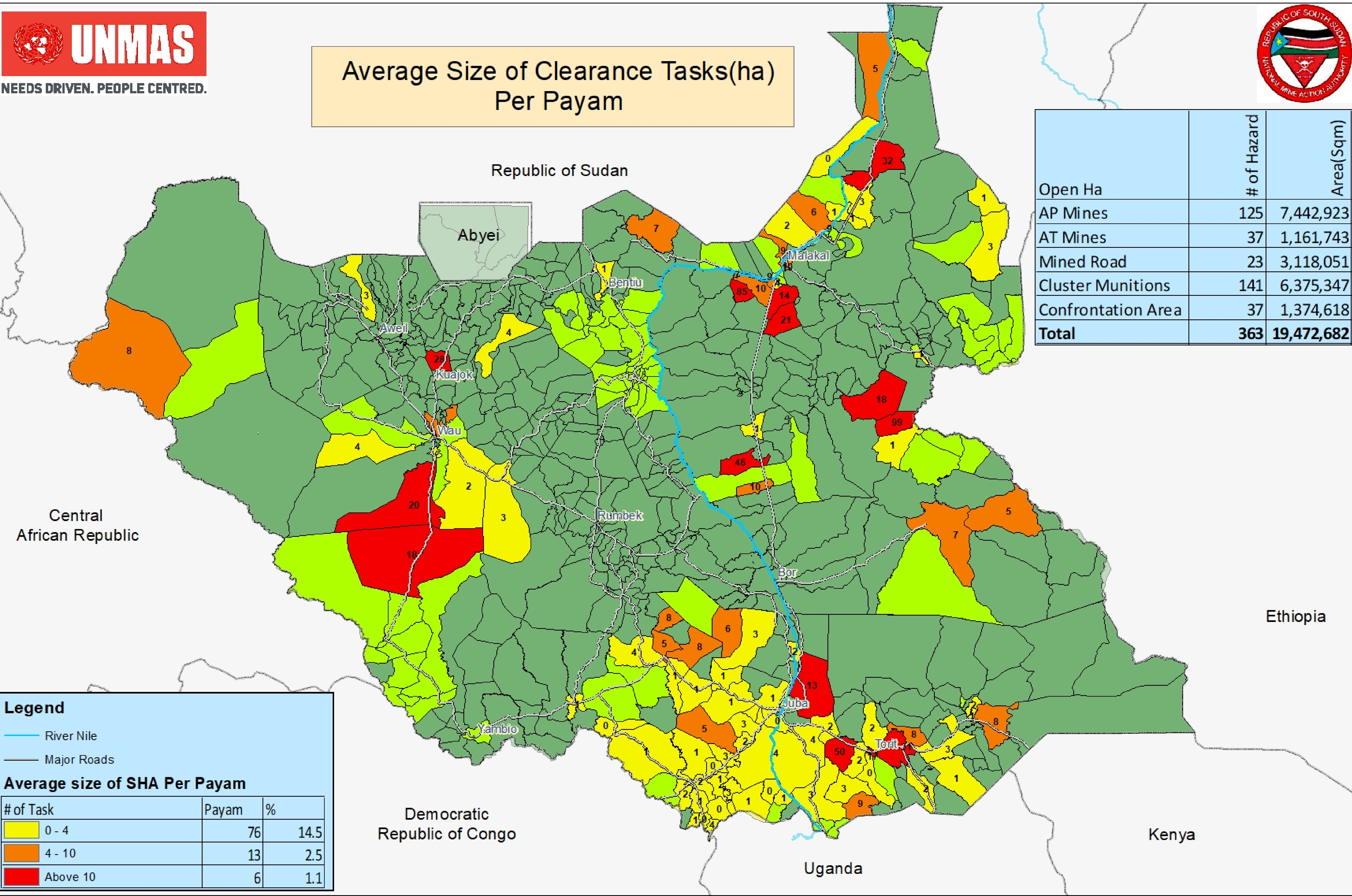
# of Task	Payam	%
Upto 100,000 Sqm	56	10.7
100,000 - 500,000	27	5.1
500,000 - 1,000,000	9	1.7
1,000,000 - 3,000,000	3	0.6
Above 3,000,000 Sqm	0	0.0

UXO Spot/Ongoing Fighting	73	13.9
No Known Hazards	357	68.0

Open Hazardous Areas in South Sudan as of 30 April 2020



Average Size of Clearance Tasks(ha) Per Payam



Open Ha	# of Hazard	Area(Sqm)
AP Mines	125	7,442,923
AT Mines	37	1,161,743
Mined Road	23	3,118,051
Cluster Munitions	141	6,375,347
Confrontation Area	37	1,374,618
Total	363	19,472,682

Legend

- River Nile
- Major Roads

Average size of SHA Per Payam

# of Task	Payam	%
0 - 4	76	14.5
4 - 10	13	2.5
Above 10	6	1.1