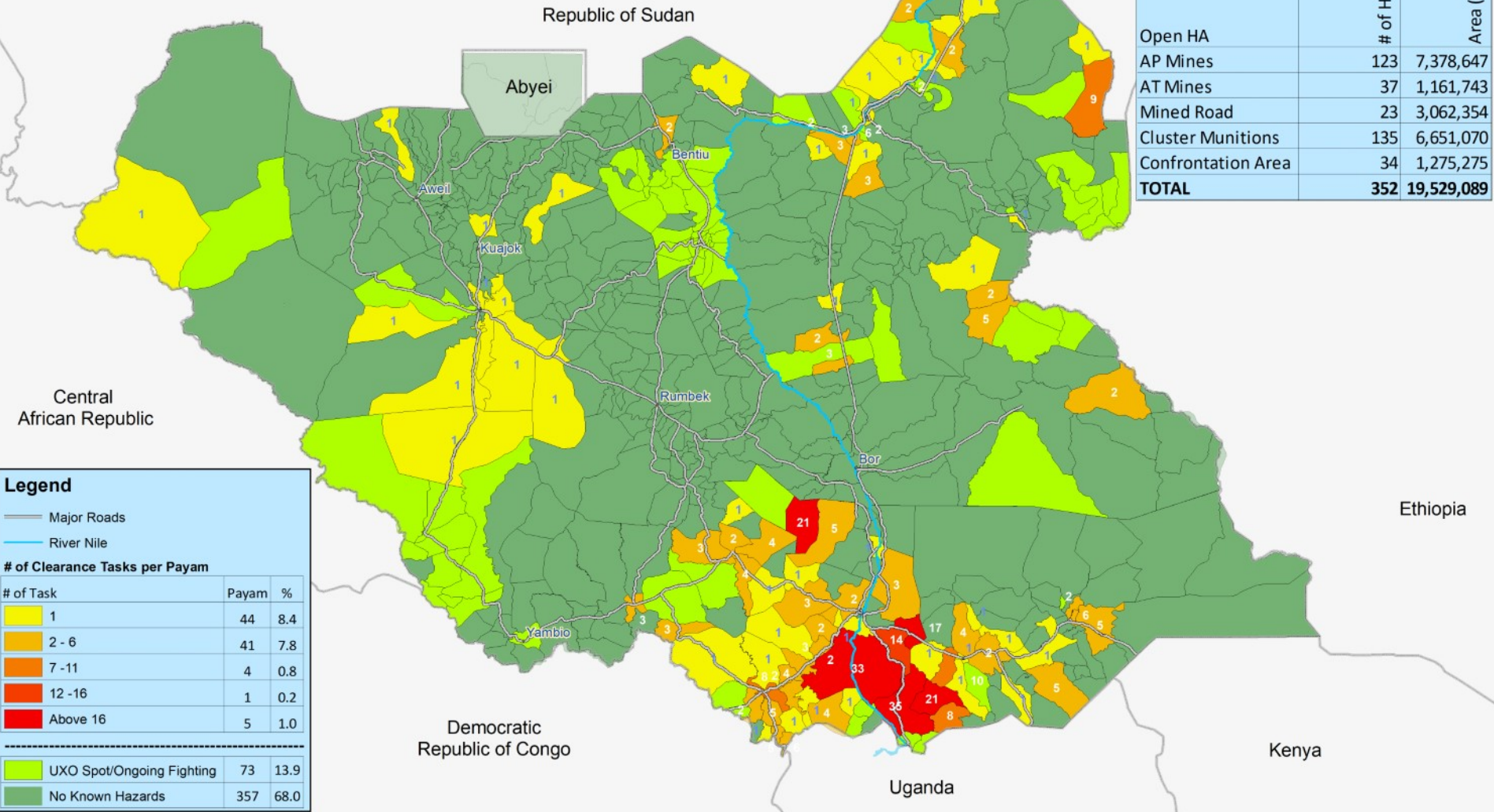


Open Hazardous Areas in South Sudan as of 31 May 2020



Situation Mapped by
Number of Clearance Tasks per Payam



	# of Hazard	Area (Sqkm)
Open HA		
AP Mines	123	7,378,647
AT Mines	37	1,161,743
Mined Road	23	3,062,354
Cluster Munitions	135	6,651,070
Confrontation Area	34	1,275,275
TOTAL	352	19,529,089

Legend

- Major Roads
- River Nile

of Clearance Tasks per Payam

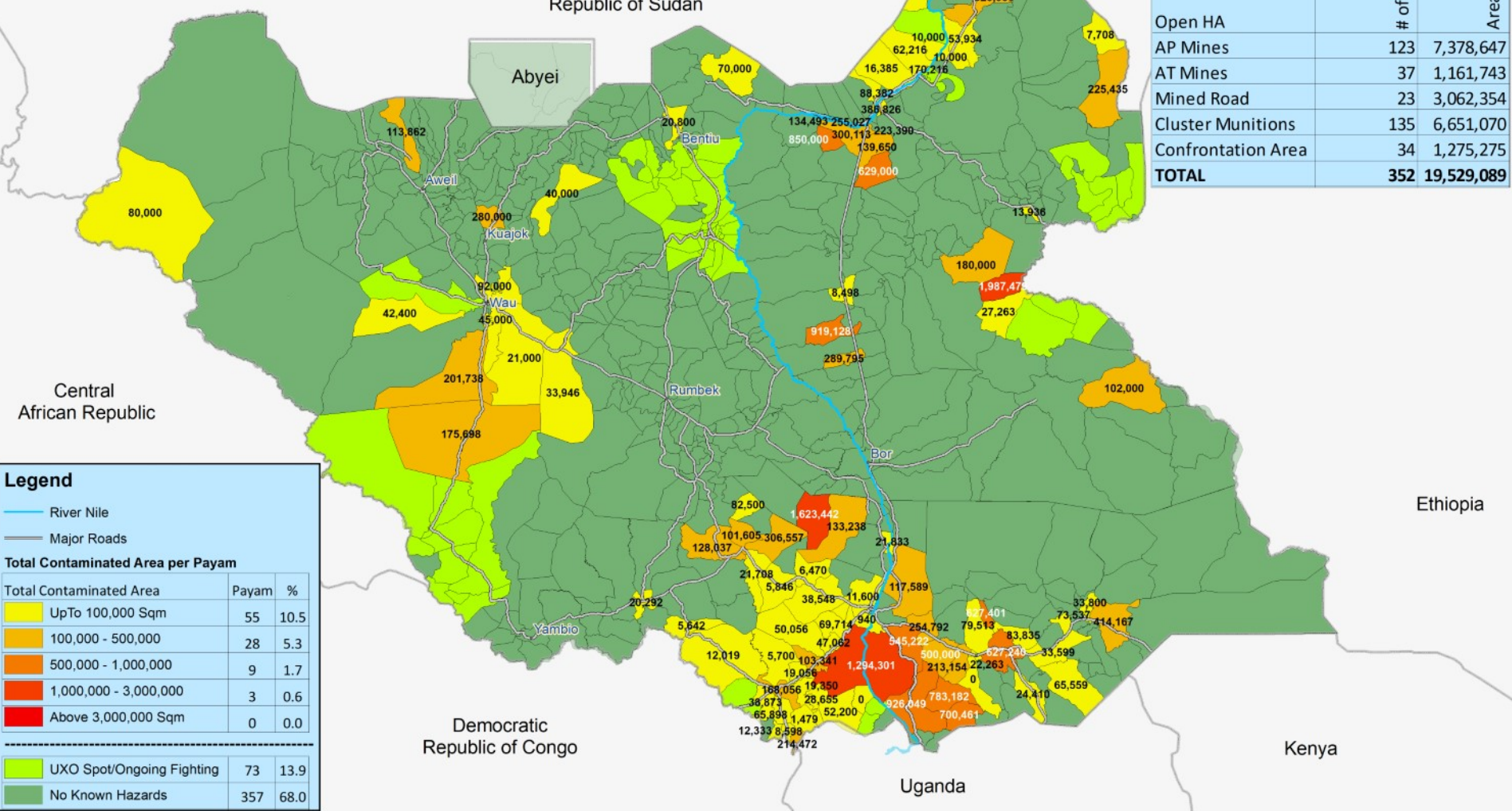
# of Task	Payam	%
1	44	8.4
2 - 6	41	7.8
7 - 11	4	0.8
12 - 16	1	0.2
Above 16	5	1.0

UXO Spot/Ongoing Fighting	73	13.9
No Known Hazards	357	68.0

Open Hazardous Areas in South Sudan as of 31 May 2020



Situation Mapped by
Total Contaminated Area per Payam



Open HA	# of Hazard	Area (Sq.m)
AP Mines	123	7,378,647
AT Mines	37	1,161,743
Mined Road	23	3,062,354
Cluster Munitions	135	6,651,070
Confrontation Area	34	1,275,275
TOTAL	352	19,529,089

Legend

- River Nile
- Major Roads

Total Contaminated Area per Payam

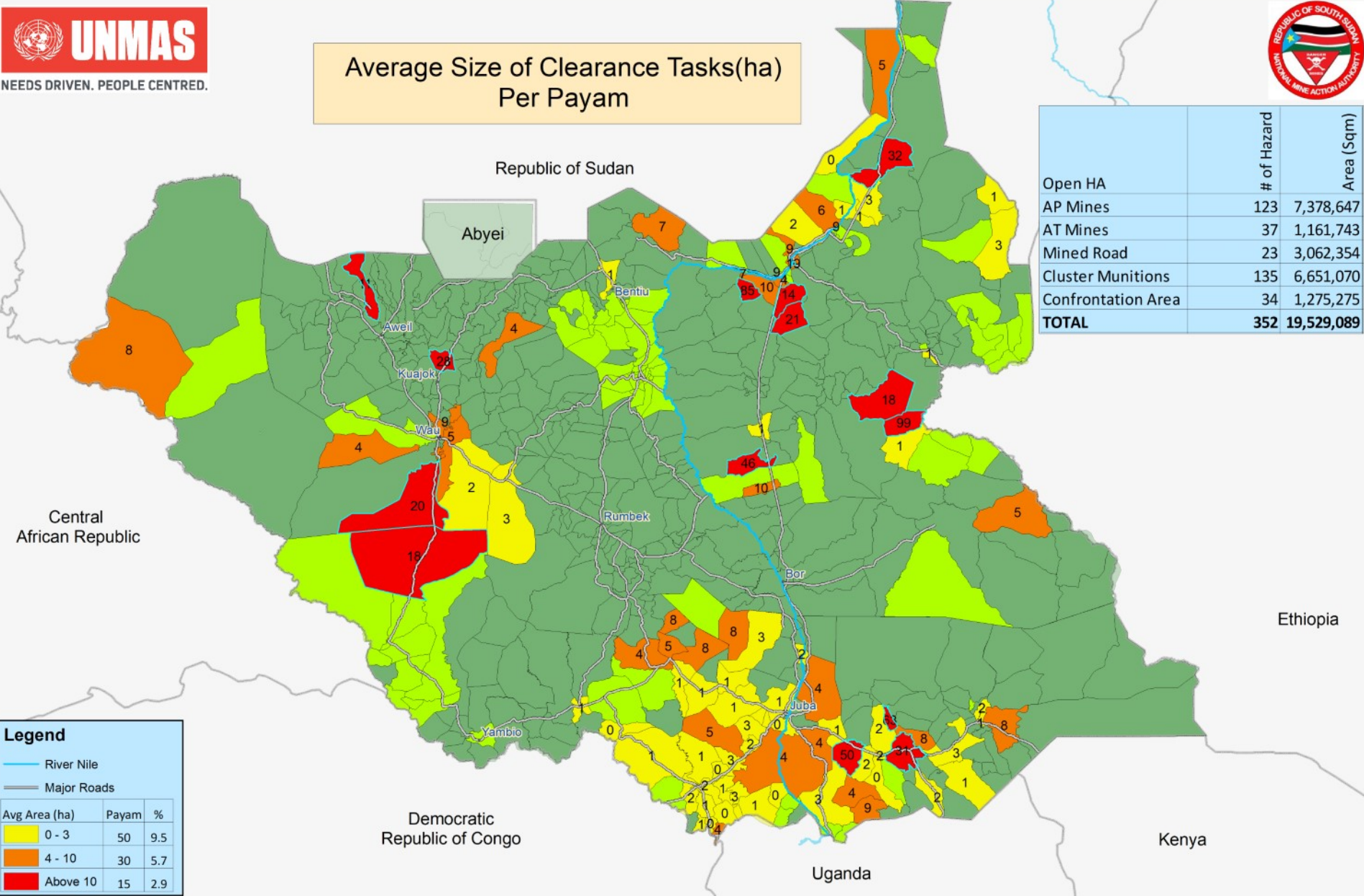
Total Contaminated Area	Payam	%
UpTo 100,000 Sqm	55	10.5
100,000 - 500,000	28	5.3
500,000 - 1,000,000	9	1.7
1,000,000 - 3,000,000	3	0.6
Above 3,000,000 Sqm	0	0.0

UXO Spot/Ongoing Fighting	73	13.9
No Known Hazards	357	68.0

Open Hazardous Areas in South Sudan as of 31 May 2020



Average Size of Clearance Tasks(ha)
Per Payam



Open HA	# of Hazard	Area (Sqm)
AP Mines	123	7,378,647
AT Mines	37	1,161,743
Mined Road	23	3,062,354
Cluster Munitions	135	6,651,070
Confrontation Area	34	1,275,275
TOTAL	352	19,529,089

Legend

- River Nile
- Major Roads

Avg Area (ha)	Payam	%
0 - 3	50	9.5
4 - 10	30	5.7
Above 10	15	2.9