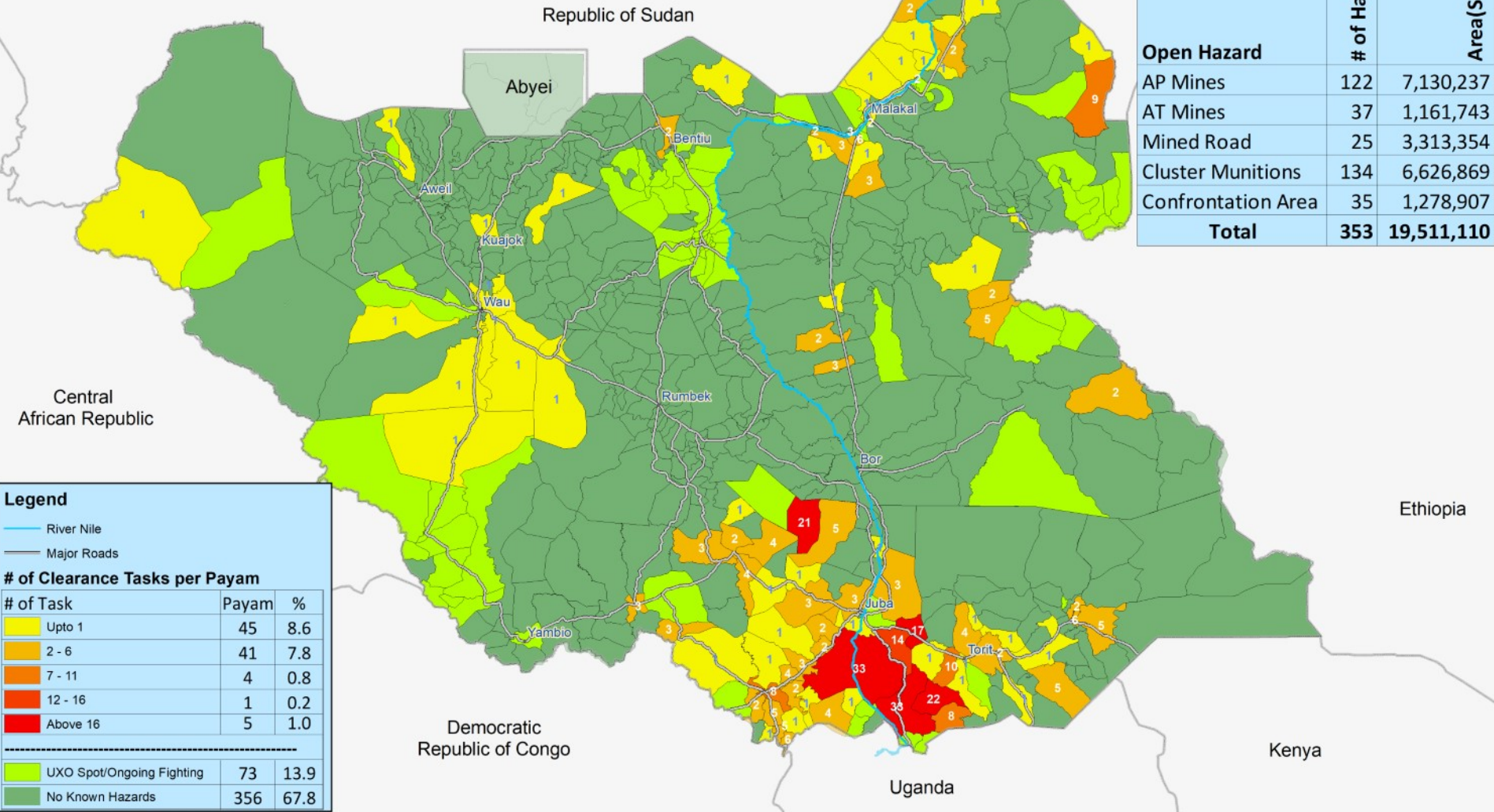


# Remaining Hazardous Areas in South Sudan as of 30 June 2020



Situation Mapped by  
Number of Clearance Tasks per Payam



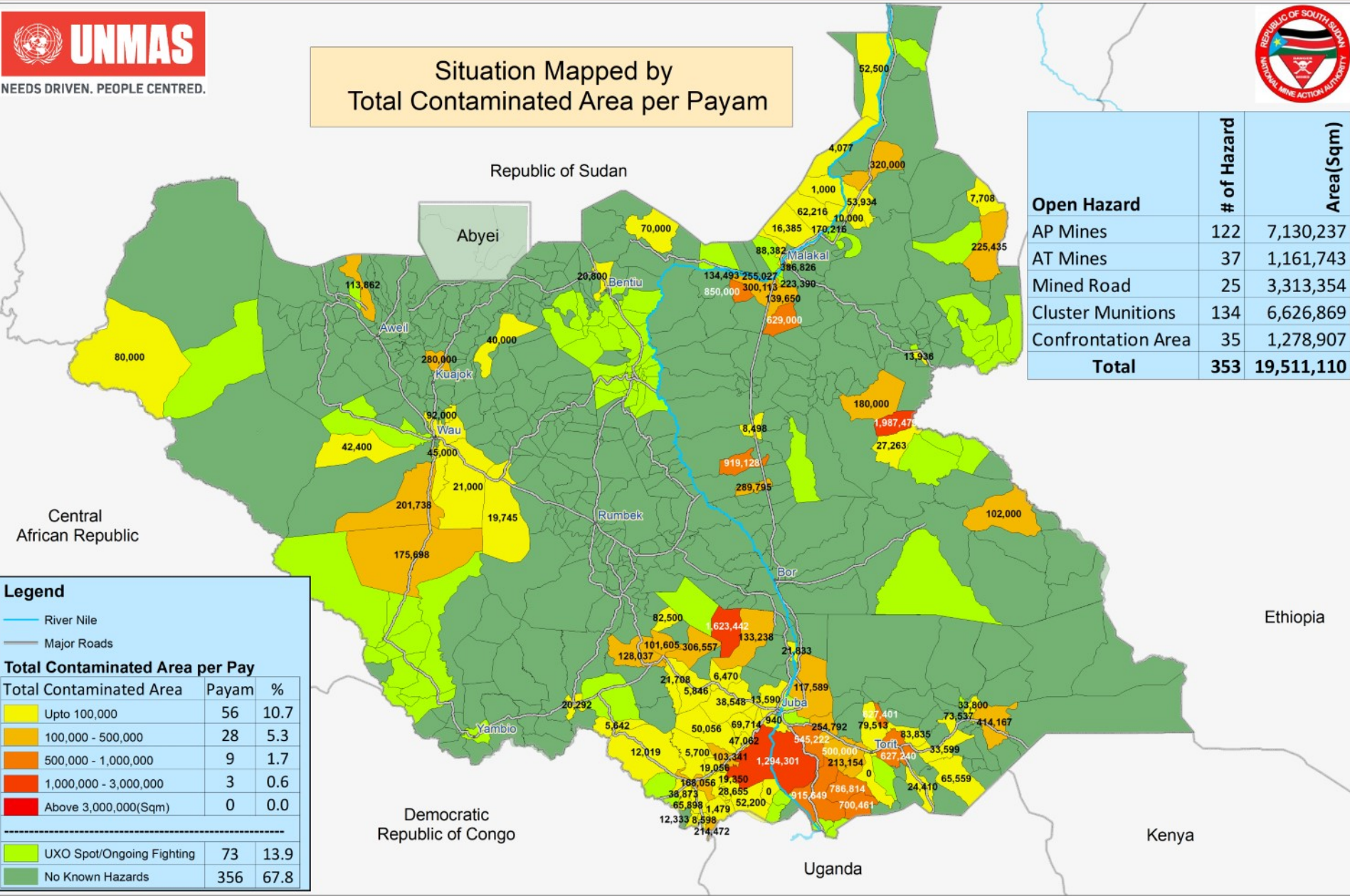
	# of Hazard	Area(Sqm)
<b>Open Hazard</b>		
AP Mines	122	7,130,237
AT Mines	37	1,161,743
Mined Road	25	3,313,354
Cluster Munitions	134	6,626,869
Confrontation Area	35	1,278,907
<b>Total</b>	<b>353</b>	<b>19,511,110</b>

Legend		
	River Nile	
	Major Roads	
# of Clearance Tasks per Payam		
# of Task	Payam	%
	45	8.6
	41	7.8
	4	0.8
	1	0.2
	5	1.0
-----		
	73	13.9
	356	67.8

# Remaining Hazardous Areas in South Sudan as of 30 June 2020



Situation Mapped by  
Total Contaminated Area per Payam



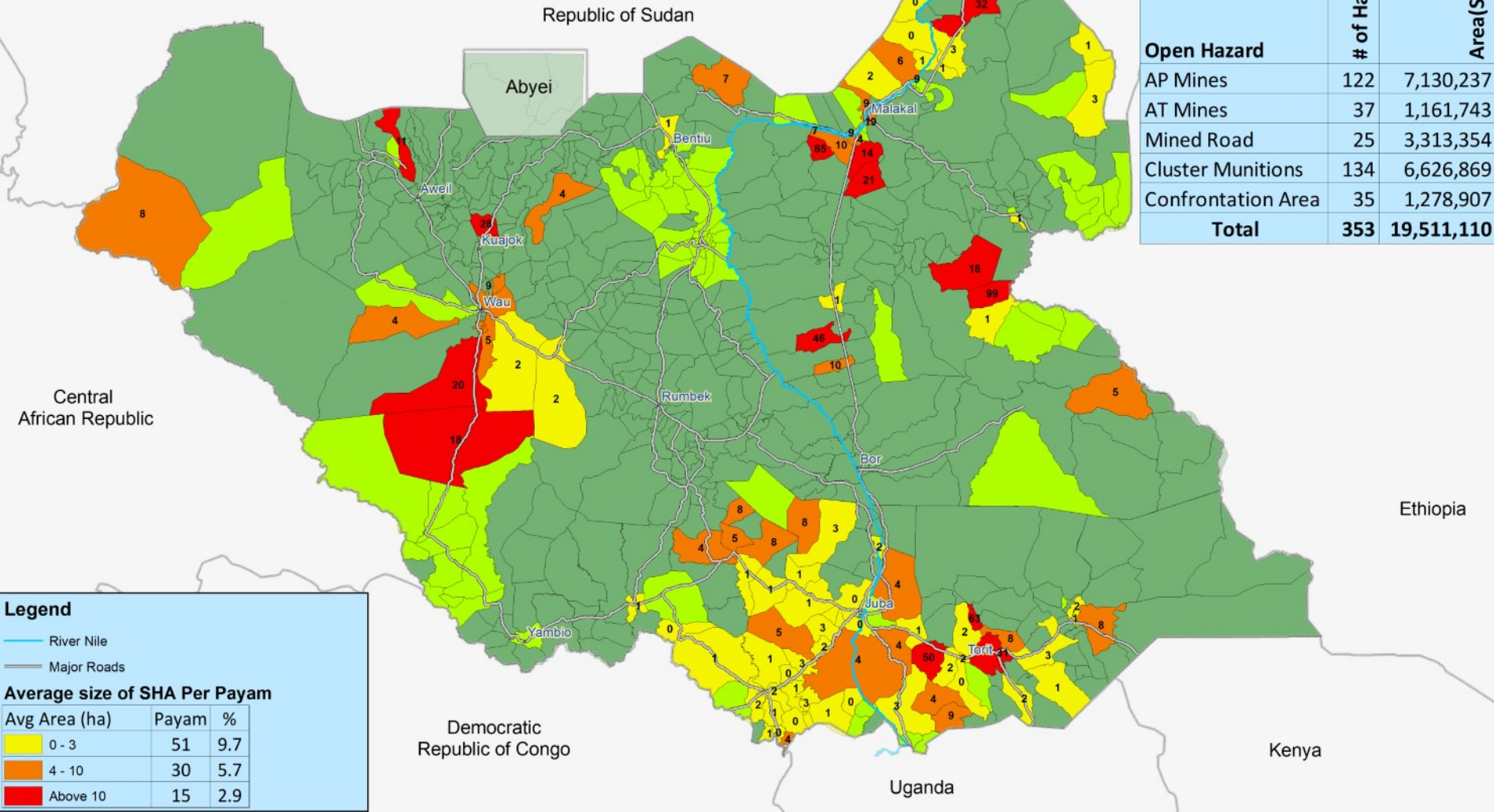
Open Hazard	# of Hazard	Area(Sqm)
AP Mines	122	7,130,237
AT Mines	37	1,161,743
Mined Road	25	3,313,354
Cluster Munitions	134	6,626,869
Confrontation Area	35	1,278,907
<b>Total</b>	<b>353</b>	<b>19,511,110</b>

Legend		
	River Nile	
	Major Roads	
Total Contaminated Area per Pay		
Total Contaminated Area	Payam	%
	56	10.7
	28	5.3
	9	1.7
	3	0.6
	0	0.0
<hr/>		
	73	13.9
	356	67.8

# Remaining Hazardous Areas in South Sudan as of 30 June 2020



Average Size of Clearance Tasks(ha)  
Per Payam



	# of Hazard	Area(Sqm)
<b>Open Hazard</b>		
AP Mines	122	7,130,237
AT Mines	37	1,161,743
Mined Road	25	3,313,354
Cluster Munitions	134	6,626,869
Confrontation Area	35	1,278,907
<b>Total</b>	<b>353</b>	<b>19,511,110</b>

**Legend**

- River Nile
- Major Roads

**Average size of SHA Per Payam**

Avg Area (ha)	Payam	%
0 - 3	51	9.7
4 - 10	30	5.7
Above 10	15	2.9