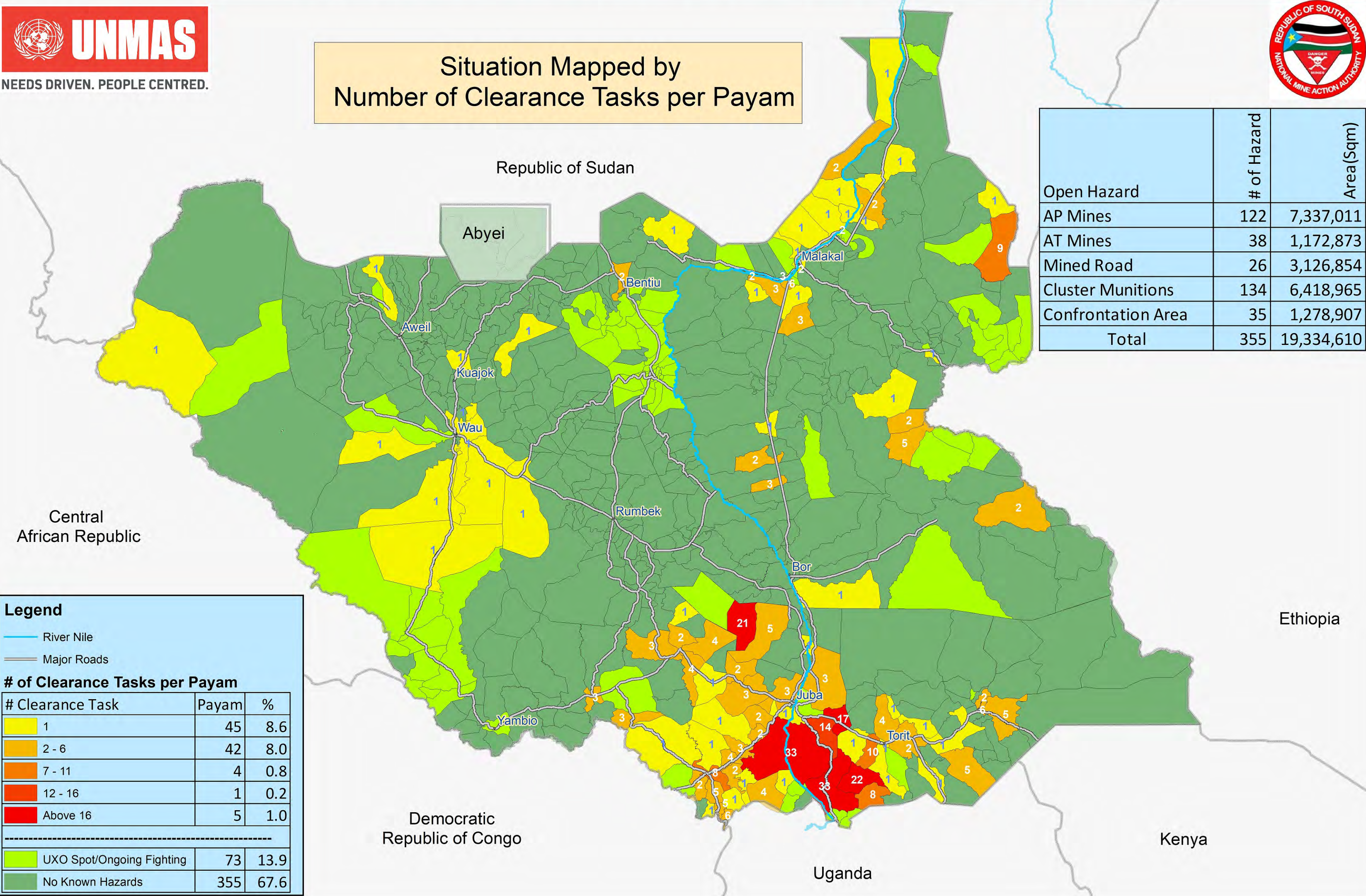


Remaining Hazardous Areas in South Sudan as of 31 August 2020



Situation Mapped by Number of Clearance Tasks per Payam



	# of Hazard	Area(Sqm)
Open Hazard		
AP Mines	122	7,337,011
AT Mines	38	1,172,873
Mined Road	26	3,126,854
Cluster Munitions	134	6,418,965
Confrontation Area	35	1,278,907
Total	355	19,334,610

Legend

- River Nile
- Major Roads

of Clearance Tasks per Payam

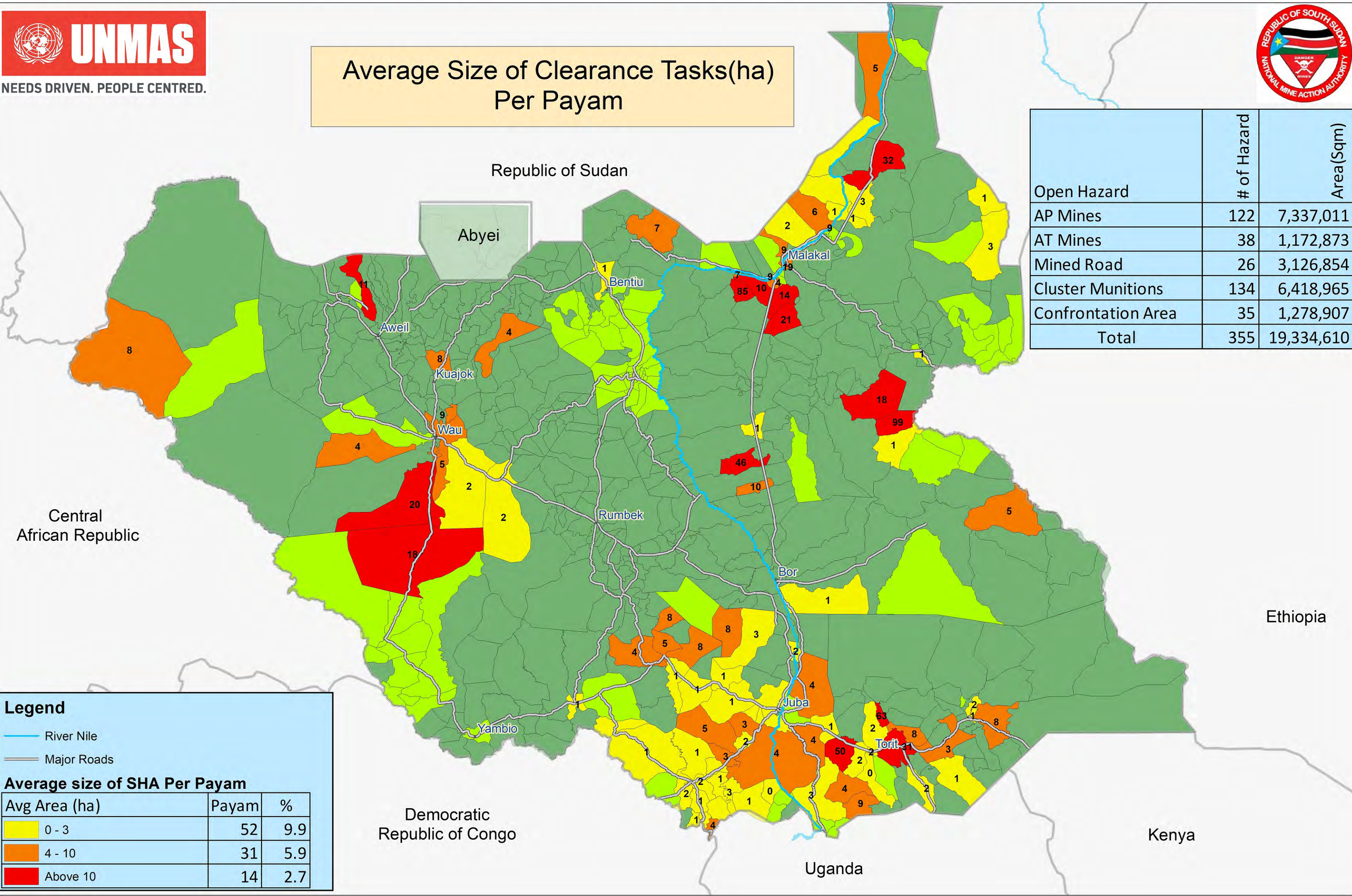
# Clearance Task	Payam	%
1	45	8.6
2 - 6	42	8.0
7 - 11	4	0.8
12 - 16	1	0.2
Above 16	5	1.0

UXO Spot/Ongoing Fighting	73	13.9
No Known Hazards	355	67.6

Remaining Hazardous Areas in South Sudan as of 31 August 2020



Average Size of Clearance Tasks(ha) Per Payam



	# of Hazard	Area(Sqm)
Open Hazard		
AP Mines	122	7,337,011
AT Mines	38	1,172,873
Mined Road	26	3,126,854
Cluster Munitions	134	6,418,965
Confrontation Area	35	1,278,907
Total	355	19,334,610

Legend

- River Nile
- Major Roads

Average size of SHA Per Payam

Avg Area (ha)	Payam	%
0 - 3	52	9.9
4 - 10	31	5.9
Above 10	14	2.7