

This report is produced by OCHA Lebanon Office in collaboration with Inter-Sector Coordination Group under 2026 Lebanon Response Plan (LRP) Framework.

KEY FIGURES



>1,049 K (MoSA)

self-registered Internally Displaced People (IDP)



136,262 (DRM)

displaced in collective shelters



663 (DRM)

shelters



1,238 (MoPH)

people killed



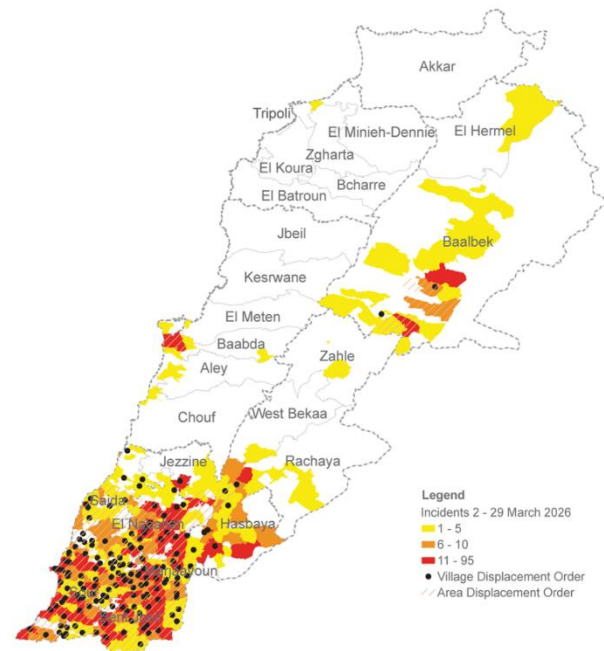
3,543 (MoPH)

people injured

HIGHLIGHTS

- The hostilities which have been ongoing for close to one-month have already claimed the lives of 1,238 people in Lebanon, including most recently rescue workers, journalists and a UN peacekeeper.
- Over a million people remain displaced from their homes in heavily impacted areas amidst increasing military activity in south Lebanon.
- Cash modalities are being coordinated and scaled up steadily to assist vulnerable households as part of the humanitarian response.

CONFLICT INTENSITY MAP as of 29 March



The boundaries and names shown and the designations used on this map do not imply official endorsement or acceptance by the United Nations.
 Creation date: 30 March 2025 Source: incidents: public media
 Feedback: ocha@lebanon.org www.unocha.org www.reliefweb.int

SITUATION OVERVIEW

In the past four weeks of hostilities, the Ministry of Public Health (MoPH) has recorded **1,238 deaths** across Lebanon, **including 87 women and 127 children**.

Ongoing **strikes have continued to impact civilians, journalists, medical teams, and UN peacekeepers**. On 28 March alone, three journalists were killed and several others left wounded in an attack in Jezzine, South Governorate. On the same day, in several separate incidents, nine rescue workers including two first responders were killed during a strike on an ambulance in Bint Jbeil. The Humanitarian Coordinator in Lebanon, Imran Riza, and the WHO Representative in Lebanon, Abdinasir Abubakar, issued a joint statement on 28 March calling for the protection of health care workers and first responders, highlighting incidents in which ambulances were being targeted.

On 29 March, a United Nations Interim Force in Lebanon (UNIFIL) position in Ett-Taibe, in southern Lebanon, came under **attack, leading to the death of a UNIFIL peacekeeper** from the Indonesian contingent and causing serious injuries to another. The next day, on 30 March, **two more Indonesian peacekeepers of UNIFIL were killed and two others injured** when an explosion of unknown origin destroyed their vehicle near Bani Hayyan, south Lebanon. **On 29 March, the UN Secretary-General issued a statement** expressing grave concern, reiterating the call for an immediate de-escalation and urging all parties to comply fully with their obligations under international law.

Israeli forces continue to issue **displacement orders across multiple locations**. Between 27-30 March, these orders for Beirut Southern Suburbs, including Haret Hreik, Ghobeiri, Laylaki, Hadath, Burj al-Barajneh, Tahwatat al-Ghadir, and Chiyah were followed by strikes.

The number of people crossing the border from Lebanon to Syria continues to grow. According to UNHCR, between 2 and 26 March, around **198,060 individuals** have crossed into Syria through the three official border crossings, including **171,781 Syrians and 26,279 Lebanese nationals**.

HUMANITARIAN RESPONSE

Humanitarian partners have been assisting affected households inside and outside the **663 collective shelters**. Emergency **multi-purpose cash assistance (MPCA)** through the Government-led Shock-Responsive Safety Net (SRSN) has reached an estimated **226,000 Lebanese** living in border villages or displaced outside collective shelters.

37,145 non-Lebanese households, including Syrian refugees and refugees of other nationalities affected by escalation are targeted for emergency support through WFP and UNHCR before the end of March.

To strengthen coherence across responses, the Cash Working Group (CWG) has activated an **Emergency MPCA Task Team**, co-chaired by UNHCR and NRC, to develop harmonized operational guidance applicable across all population groups. The guidelines will cover harmonized emergency targeting, computation of an emergency basket, alignment with national systems and sectoral responses to ensure complementarity and avoid duplication.

Engagements with sectors on planned emergency sectoral cash responses are ongoing, with the CWG providing technical guidance to ensure coherence and complementarity with Emergency MPCA delivered through the Government-led SRSN for Lebanese or through LRP Humanitarian Emergency MPCA for non-Lebanese.



Access and Civil-Military Coordination

Humanitarian partners, supported by the Humanitarian Notification System (HNS), continue delivering assistance in conflict-affected and hard-to-reach areas. Between 2 and 29 March, **26 HNS-supported movements were completed**, while static humanitarian sites remain regularly notified across Lebanon.

Following the expansion of HNS coverage for **north of the Litani River (NLR)**, **11 movements were facilitated**, enabling the retrieval of core relief items from Haret Hreik and the delivery of hygiene kits, food assistance, and medical supplies across multiple locations, including Deir El Zahrani, Deir Al Ahmar, and surrounding areas.

For **South of the Litani River (SLR)**, **15 movements supported** the delivery of essential assistance, including food, hygiene kits, medical supplies, and other core relief items, to collective shelters, alongside evacuations of

the most vulnerable from border areas. However, the constrained operating environment continues to significantly limit humanitarian access and partners' ability to reach affected populations.

The Access Working Group and Civil-Military Coordination (CMCoord) Cell continue efforts to facilitate and advocate for safe, principled, and timely humanitarian access, with a focus on the most affected and hard-to-reach areas.

Education

According to the DRM report, around **47,690 children** are currently accommodated in collective shelters. In total, **481 schools** (including 361 public and 74 private, and 46 TVET schools) are being used as collective shelters.

Education partners continue supporting displaced children by providing them **1,032 education kits or supplies to shelters and learning centres** (22 in Beirut, 313 in Mount Lebanon, 329 in the North, 36 in Akkar, Baalbek-EI Hermel 2, Bekaa 6, El Nabatieh 6, and 320 in the South).

With the support of education sector partners, 209 displaced children have accessed online formal education. In non-formal education, 652 displaced children have participated in-person learning, while 330 have accessed online learning. These children include non-Lebanese and Lebanese boys and girls, as well as boys and girls with disabilities in Baalbek-EI Hermel, Beirut, Bekaa, Mount Lebanon, and North.

As of 30 March, approximately **300 schools have reopened in the North and Akkar governorates** (hosting both morning and afternoon shifts). Of these, 50 schools are operating as hub schools, accommodating students from closed schools through rotational, shift-based scheduling. Additional schools are expected to open in Mount Lebanon and Bekaa in the coming days.

Food Security & Agriculture

Since the escalation began on 2 March 2026, partners mobilized rapidly and initiated food distributions in shelters, providing a total of **2.9 million hot and cold meals**. Partners also distributed **64,000 ready-to-eat (RTE) kits** to support affected families with immediate food needs.

The sector has identified several shelters with preliminary capacity to **transition from hot meal distribution to onsite meal preparation**.

The Ministry of Agriculture (MoA), in coordination with the FSA Sector, has developed **a tool to assess partners' capacity to reprogramme their agricultural activities and redirect support to farmers affected by the recent escalation, including those in hard-to-reach areas and those who have been displaced**. In addition, the FSA Sector and MoA are working together to produce weekly reports on the impact of the conflict on Lebanon's agriculture sector, providing key findings and analysis on damage and losses. The sector is also facilitating linkages between partners with the capacity to address urgent agricultural needs, such as supporting livestock owners in the south who lack fodder and assisting beekeepers in relocating to safer areas.

A multisectoral Food Safety Task Force – comprising of MEHE, MoSA, MoA, WFP, the FSA Sector, MoPH, and the President of the Lebanese Food Safety Commission – has been mandated to **oversee and regulate the safety standards of all meals provided within shelters**, operating under the authority of the government's Task Force Committee. The task force is currently developing comprehensive food safety guidance, which will be disseminated upon its finalization.

The sector dashboard that provides detailed information on the ongoing response inside shelters is accessible via the link https://analytics.wfp.org/t/Public/views/2026_LB_Emergencytracker/ERLebanon2026.



Health

At primary health care level, **195 PHCCs are linked to 661 collective shelters**, ensuring continued access to **comprehensive Sexual and Reproductive Health (SRH), immunization, non-communicable disease (NCD) services, and MHPSS support**. Heightened pressure persists in the South, Mount Lebanon, and Beirut with each PHCCs supporting an average of four collective shelters.

Continued attacks on healthcare workers represent a blatant violation of International Humanitarian Law and a clear breach of UN Security Council Resolution 2286, which mandates the protection of health personnel and facilities. Since the renewed hostilities, the Surveillance System for Attacks on Health Care (SSA) has recorded **87 attacks, resulting in 52 deaths and 126 injuries among health workers**. These unacceptable attacks not only endanger frontline responders but also severely compromise the health system's ability to deliver lifesaving services.

In response, the Health Sector is urgently calling for the protection of all medical personnel and demands full respect for humanitarian norms to safeguard access to care for affected populations.



Nutrition

11,562 children under five, adolescent girls, and pregnant and breastfeeding women were reached with emergency nutrition rations and micronutrient supplementation sufficient for one month in 466 shelters out of which approximately 51 children aged 6-11 months were reached with age-appropriate complementary feeding packages. **4,700 children under 5 and pregnant and breastfeeding women** were screened for wasting. So far, 107 children under 5 years of age and 22 women have been identified with wasting and referred for life saving treatment. Through the recently developed Infant and Young Child Feeding (IYCF) chatbot link, 311 caregivers have accessed guidance on optimal feeding practices in emergencies, thus complementing in-person counselling and enhancing the timeliness of referrals for caregivers in need of counselling. In parallel, 186 caregivers contacted the national IYCF hotline, of whom 122 were referred for additional specialized support. Overall, more than 3,402 caregivers of children under 5 years were reached with specialized IYCF, nutrition, and ECD counselling and awareness on optimal nutrition practices in an emergency.

The nutrition sector has enhanced the **integration of essential nutrition and early childhood development (ECD) interventions across multiple service delivery platforms in Lebanon, including Primary Healthcare Centres (PHCCs) and their Satellite Units (PSUs)**. To date, **37 nutritionists were deployed across 37 PSUs**, delivering nutrition interventions across 87 shelters, in addition to reaching host communities and hard-to-reach, high-risk areas. ECD services have also been delivered inside more than 40 collective shelters. Interventions include children's milestone screening, caregiver counselling on ECD in emergencies, ECD group sessions and structured play activities to promote stimulation, responsive caregiving, and nurturing care.

Challenges: Non-programmatic nutrition supply donations where nutrition supplies are being donated directly to partners without alignment to identified needs or sector coordination, leading to inefficiencies and potential misuse of resources.

Uncontrolled distribution of processed and ultra-processed foods in shelters is contributing to poor dietary quality and negatively impacting children's nutritional status. To mitigate this, the Nutrition Sector is developing guidance and a social media package to promote healthier food assistance, reduce ultra-processed food donations, and support partners in managing unsolicited in-kind items. In addition, WFP will provide fortified date bars for 23,000 school age children in non-formal education platforms along with awareness on optimal nutrition practices.



Needs and Protection Risks: Needs remain significant as displacement continues across multiple regions. Data and information on risks and needs outside collective sites remains limited. Protection partners report rising concerns linked to ongoing hostilities, including exposure to violence and psychological distress among affected populations. Housing scarcity, informal shelter arrangements, and limited legal protections are increasing **risks of eviction and exploitation**, forcing particularly vulnerable IDPs to remain in or return to conflict-affected areas. In several locations, people continue living in tents or on the streets due to a lack of viable alternatives. As the conflict enters its second month, partners report growing concerns about **rising eviction risks amid depleted livelihoods and escalating costs, including rent**.

Child protection risks continue to increase, with partners noting stress among children as well as **risks related to family separation, child labor, movement restrictions, and loss of documentation**. GBV risks and necessary risk mitigation measures remain a priority within the GBV response and are flagged across relevant sectors. Insecurity in high-risk areas has temporarily restricted access to Women and Girls Safe Spaces and limited mobile outreach, reducing access to confidential GBV services. Partners also note heightened exposure to exploitation – particularly in overcrowded collective sites and private accommodations.

Persons with disabilities continue to face access challenges, with many staying in non-accessible shelters or outside formal sites where essential services remain limited. Some are accommodated in designated inclusive facilities, including accessible schools and Organizations for Persons with Disabilities (OPD) centers. Feedback received through **Accountability to Affected People mechanisms indicates increased demand for information, guidance, and referrals**, including for individuals presenting acute vulnerabilities. Current referrals are made to specialized NGOs while lists are compiled for accessible shelters through the Emergency TF for Persons with Disabilities.

Response: Protection, Child Protection, and GBV partners continue implementing activities inside and outside collective sites. As of **30 March**, partners have reached **54,091 displaced individuals**, including 27,417 **through information sessions** and **18,706 through recreational and psychosocial support**, as well as support to high-risk cases assisted through case management. Additionally, **7,305 women and girls have received dignity kits**, and **663 non-Lebanese households have received Emergency Protection Cash**.

Through the sector geo-split tool, **663 collective sites** have been mapped, with **78 per cent assigned to partners providing Protection, Child Protection, or GBV services**. Coordination and collaboration with MoSA focal points and amongst partners covering the same sites remains a key catalyst. Meetings between MHPSS and Protection actors have supported identification of needs, gaps and will enhance cross-sectoral referral mechanisms.

Child protection actors have intensified outreach to populations residing in informal settlements, public spaces, and on the streets, ensuring that the most vulnerable children and families are identified. Through these efforts, teams are sharing critical information on available services, supporting children at risk, and facilitating timely referrals to appropriate support. Outreach interventions are also enabling the delivery of essential services, helping to bridge gaps in access for displaced populations living outside formal shelter settings. Child protection hotlines continue to provide critical support to displaced families, serving as an accessible entry point for assistance and referrals. The majority of callers were counselled or redirected to existing programmes, with several already assessed or assisted by other actors, highlighting both the reach of ongoing interventions and the need for continued coordination.

GBV partners continue awareness and PSEA information sessions, while **Child Protection actors maintain service continuity** through onsite and remote modalities. Feedback from PSS activities highlights their positive impact on children and caregivers' sense of safety and well-being. The Disability Task Force continues coordination with WASH, Shelter, and Health sectors to reinforce inclusive service delivery.

Gaps: Remaining access constraints, increased caseloads, and funding limitations continue to stretch partner capacities, particularly in hard-to-reach areas. Demand for legal, GBV, and MHPSS services exceeds available capacity, and support for OPDs – especially for assistive devices – requires additional resources to meet growing needs. Support for high-risk cases with compounded vulnerabilities present high costs and limited available services. Increasing rental prices aggravate challenges for non-Lebanese to find housing.

Shelter

The ongoing response to address emergency shelter needs is reaching affected populations both inside and outside collective shelters. Overall, Shelter partners have distributed **98,819 mattresses** and **121,172 blankets**, among other core relief items (CRIs).

Across collective sites in all governorates, shelter partners have distributed **89,966 mattresses**, **106,403 blankets**, **47,963 sleeping mats**, **39,618 pillows**, as well as approximately **9,385 solar lamps** and **8,370 jerry cans**. CRI response in collective shelters, as reported by subnational DRRs, has successfully reached all identified households in need as part of an initial round of assistance. Ongoing support is being continuously delivered based on daily referrals from DRRs and MoSA, targeting new arrivals in existing sites as well as populations in newly activated collective shelters. In addition, the CRI distribution outside collective sites is being informed by assessed needs and referrals of vulnerable households. This support was delivered on a case-by-case basis and includes **8,853 mattresses**, **14,769 blankets**, and **3,056 clothing sets**.

In addition, the Shelter Sector has assigned 503 collective sites to shelter partners. Of these, **325 sites** have been assessed to identify repair needs, partitioning requirements to increase hosting capacity and improve privacy, and any upgrades required to ensure the sites are adequate to host displaced families, with partners proceeding with the necessary works accordingly. A total of **223 technical submissions** has been made to secure approvals to initiate repairs from the relevant authorities/ focal points, of which 165 have been approved and works have already commenced in **115 sites**, of which 23 have been completed.

Water, Sanitation, and Hygiene (WASH)

WASH partners have delivered assistance in **615 collective shelters**, reaching **150,154 IDPs**. To date, **46,512** hygiene kits and **23,961** menstrual hygiene kits have been distributed across **592** shelters, while **795,715 litres** of bottled drinking water and **15,828 m³** of water through water trucking have been delivered to **493** shelters. In addition, **570,689 liters** of fuel have been provided to Water Establishments to sustain public water supply services for **412,160 people**. In addition, **645 Rapid Technical Assessments (RTAs)** have been completed in collective shelters.

Social Stability

The Tensions Monitoring System (TMS) at UNDP is issuing the [Tensions Pulse](#), which provides decision-makers and humanitarian actors with timely, evidence-driven insights to support planning and adaptive responses. The Pulse features a **Tensions Dashboard**, **analysis of online narratives**, **a map of geographical hotspots**, and a **“What to Watch” section highlighting emerging issues**. It is based on analysis generated through the UNDP’s TMS, which combines open-source and social media monitoring with field inputs coordinated alongside government counterparts and partner organizations.



Logistics and Telecommunications

The Logistics and Telecommunications Cluster (LTC) was formally activated on 16 March 2026 to support the humanitarian response with essential logistics and telecommunications services amid the escalating crisis in Lebanon.

The [LTC Logistics response](#) focuses on coordination, information management, and facilitating access to common services, including storage and transport through convoys.

As of 30 March, three convoys have been facilitated to hard-to-reach areas, delivering critical relief items including blankets, mattresses, sleeping mats, hygiene, health and dignity kits, as well as water and food assistance. Deliveries to these locations require complex coordination due to rapidly evolving security conditions, access constraints, and operational challenges at delivery sites, including limited unloading capacity, lack of equipment, and insufficient labour. These factors continue to impact planning and implementation, underscoring the importance of a coordinated approach. Additional **planned convoys have been repeatedly postponed due to security constraints**, affecting the timely delivery of assistance to vulnerable populations.

The Logistics team continues to coordinate closely with local authorities and partners to triangulate access information, ensuring prioritisation of locations based on needs and feasibility. **Close collaboration with the Access Working Group, WFP Logistics, and the Humanitarian Notification Coordination Centre (HNOCC)** is set to assess alternative routes and identify feasible delivery points. The LTC [LogIE mapping physical access constraints tool](#) is available online for partners to review and report live on physical access constraints.

In parallel, the Cluster is working to assess the customs-related challenges partners are facing, identify common gaps, and determine the next steps in addressing them.

Fuel access remains a critical concern: while overall supply into Lebanon is stable, access to fuel in hard-to-reach areas is increasingly constrained, particularly for health facilities. At the same time, ongoing attacks on energy infrastructure are driving greater reliance on generator power, placing additional pressure on limited fuel availability. Fuel price fluctuations are being closely monitored, as they directly affect the cost and feasibility of logistics operations and supply chains overall.

The LTC's Telecommunications response is focusing on coordination with government counterparts and partners, and on deploying emergency telecommunications equipment and services to humanitarian actors across the country. A telecommunications lead is on the ground supporting the coordination of emergency telecommunications needs and gaps and engage with authorities and partners to mobilize resources for the response.

Telecommunications support is closely integrated with logistics operations. A telecoms specialist will join an upcoming convoy to Tyre on 31 March to conduct rapid communications needs assessment of affected communities. This will evaluate internet access and reliability, power availability, channels being used to access information, and information needs. The telecoms lead will also conduct mobile internet tests to inform connectivity mapping both for municipalities and safe convoy movements.

GENERAL COORDINATION

Inter-agency coordination continues to be reinforced at both national and sub-national levels, with Operational Coordination Groups (OCGs) playing a central role in translating national priorities into area-based response planning and identifying priority locations for interventions.

Efforts are ongoing to streamline communication and communication channels to ensure unified validation of needs and clearer guidance to sectors and partners, reducing parallel coordination tracks at both national and sub-national level.

Sector coordination teams are further strengthening their role in consolidating partner reporting, service mapping, and gap analysis, feeding into inter-sector prioritization and informing response adjustments.

Discussions are ongoing to strengthen the assessment approach inside collective shelters, including complementing existing daily site-level data collection with broader multi-sectoral analysis to better capture vulnerabilities and priority needs.

Preparations are underway for the rollout of the inter-sectoral rapid needs assessment (RNA) tool outside collective shelters, pending final endorsement by MoSA. Partners remain on standby to deploy once access is granted.

Coordination on humanitarian convoy planning is being further structured, with continued engagement between ISCG, OCGs, the Logistics Cluster, and access coordination mechanisms to prioritize locations and streamline notification timelines.

Overall, coordination efforts remain focused on aligning Government-led structures with inter-agency mechanisms to ensure a coherent, needs-based, and timely response across all affected areas.