

This report is produced by OCHA Lebanon Office in collaboration with Inter-Sector Coordination Group under 2026 Lebanon Response Plan (LRP) Framework.

KEY FIGURES



>1,049 K (MoSA)

self-registered Internally Displaced People (IDP)



140,914 (DRM)

displaced in collective shelters



684 (DRM)

shelters



2,089 (MoPH)

people killed



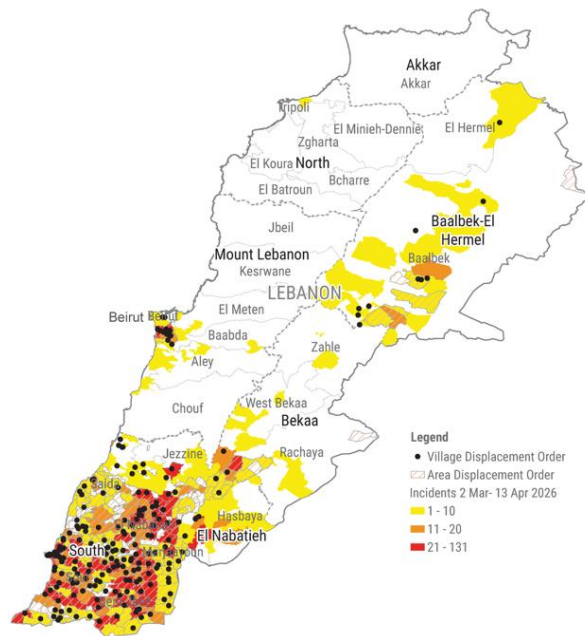
6,762 (MoPH)

people injured

HIGHLIGHTS

- **More than 2,000 people killed and 1.2 million displaced** since the escalation began on 2 March, including over **140,000 people sheltering in collective sites**.
- **Deadly airstrikes and security incidents continue**, including a strike on **Nabatieh Governorate** killing 19 people and damage to **UNIFIL vehicles** amid ongoing fighting in the south.
- **Humanitarian needs remain severe**, with partners responding under extreme insecurity, access constraints and **major funding shortfalls** under the Lebanon Flash Appeal.

CONFLICT INTENSITY MAP of 13 April



The boundaries and names shown and the designations used on this map do not imply official endorsement or acceptance by the United Nations.
 Creation date: 14 April 2026 Source: incidents; public media
 Feedback: ocha@lebanon@un.org www.unocha.org www.reliefweb.int

SITUATION OVERVIEW

Hostilities across Lebanon continued during the reporting period, following the large-scale airstrikes of 8 April and amid ongoing military operations in southern Lebanon, parts of the Bekaa and Beirut's southern suburbs. Since the escalation began on 2 March, the Ministry of Public Health has reported **more than 2,000 fatalities**. The security environment remains highly volatile, with continued risks to civilians, civilian infrastructure, humanitarian personnel and UN staff.

The humanitarian impact remains severe. **At least 1.2 million people are displaced**, including over **140,000** hosted in collective shelters. Many displaced families have experienced repeated displacement and remain unable to return due to ongoing hostilities and widespread destruction. Overcrowding in shelters and sustained pressure on essential services persist, particularly in urban and peri-urban areas.

Several **notable incidents** were reported during the period. On **11 April**, an airstrike on the **Nabatieh Governorate building** reportedly killed **19 people**, including **13 members of the Lebanese State Security Forces**, and injured approximately **15 others**. Israeli military operations in southern Lebanon continued overnight into Monday, resulting in additional casualties. Airstrikes were also reported in **Western Bekaa**, including strikes in **Mashghara** that occurred in close proximity to **Litani River Authority workers**, raising concerns about risks to civilian personnel and critical water infrastructure.

Pressure on the health system continued. Health facilities remain overstretched as they respond to conflict-related injuries alongside routine care, amid supply shortages, staffing constraints and infrastructure damage. Attacks and threats affecting **health workers, ambulances and health facilities** continued to be reported during the period, increasing protection concerns.

Security incidents involving international personnel persisted. On **12 April**, reports indicated that **IDF soldiers rammed UNIFIL vehicles with a Merkava tank**, causing significant damage. This follows the deaths of **at least three UNIFIL peacekeepers** in separate incidents at the end of March amid ongoing fighting between IDF forces and Hezbollah in southern Lebanon.

Political and diplomatic developments continued alongside the escalation. On **12 April**, marking the **51st anniversary of the outbreak of the Lebanese civil war**, Lebanon's Prime Minister reiterated calls for national unity and renewed efforts to end hostilities and protect civilians. In parallel with **United States–Iran ceasefire negotiations, Lebanon–Israel diplomatic talks** are scheduled to begin, with preparatory meetings planned for **14 April in Washington**.

HUMANITARIAN RESPONSE

As hostilities enter their **seventh week, humanitarian needs across Lebanon continue to grow**. Frontline responders, humanitarian partners, and national and local authorities are continuing efforts to reach people affected by the ongoing escalation, despite a highly volatile security environment. Humanitarian personnel, including national staff and their families, remain directly affected by insecurity and displacement, impacting operational capacity in several locations.

Displacement trends remain predominantly **out-of-shelter**, with the majority of displaced households residing in host community arrangements, rented accommodation or informal shelters. These living conditions continue to limit access to assistance and exacerbate protection risks. Priority needs include **life-saving shelter support, food and non-food items, health and nutrition services, and water, sanitation and hygiene (WASH) assistance**, alongside **education, social cohesion and protection services**, including psychosocial support and family tracing and reunification.

Rising **food prices and rental costs** are further compounding vulnerabilities, particularly for displaced populations and those remaining in **hard-to-reach areas**, including parts of southern Lebanon where military activity has intensified. These dynamics are increasing reliance on humanitarian assistance and constraining households' ability to meet basic needs.

To support the response, **two additional European Union Humanitarian Air Bridge flights** carrying humanitarian cargo to Beirut have been scheduled, with the first expected to arrive on **23 April**, aimed at reinforcing critical supply pipelines.

Humanitarian partners continue to deliver life-saving assistance across sectors through existing coordination mechanisms. However, response efforts remain constrained by **insecurity, access limitations and significant funding shortfalls** under the **Lebanon Flash Appeal (March–May 2026)**, limiting partners' ability to scale up and sustain assistance at the level required. One month after the launch of the Appeal on 13 April, at little over

20 per cent (USD 67million) of USD 308.3 million has been received. The situation remains highly volatile, underscoring the need for continued advocacy for the **protection of civilians, civilian infrastructure, humanitarian and UN personnel**, sustained humanitarian access and **urgent resource mobilization**.



Access and Civil-Military Coordination

Humanitarian partners, supported by the Humanitarian Notification System (HNS), continue to deliver assistance to conflict-affected and hard-to-reach areas. Between **2 March and 13 April**, **51 HNS-facilitated movements** reached communities in hard-to-reach areas, including areas where people remain present such as Hasbaya, Chebaa, Ein Ebel, Tyre, Rmeish, Tebnine, among others. These movements enabled the delivery of critical, life-saving assistance, including food and bread, safe water, medical supplies, fuel, hygiene and dignity kits, nutrition support for pregnant and breastfeeding women, and the evacuation of the most vulnerable to safer locations.

Despite these efforts, **humanitarian access remains severely constrained**, and the situation is becoming increasingly challenging due to the widening and repeated displacement orders, the intensifying fighting in the south, and the targeting of critical infrastructure including bridges connecting the North of the Litani River to the South.



Multipurpose Cash Assistance (MPCA)

Preparations are underway among CWG actors to process **additional emergency MPCA in the coming weeks**. From this week, approximately **80,000 households will be targeted with emergency MPCA** through the SRSN. This reflects an overall funding envelope of around US\$ 10 million, comprising approximately US\$ 2.2 million from CWG NGO partners and the remaining contribution from WFP.



Education

Following five weeks of school closures, **the Ministry of Education and Higher Education (MEHE) has initiated a phased reopening of schools** in some areas. Schools that are not currently used as collective shelters are resuming operations through a flexible, hybrid approach combining in-person and online learning, depending on space availability, staff presence, and student access. However, displacement continues to significantly limit access to education. According to DRM reports, over **390,000 children remain internally displaced**, with more than **48,200 children** accommodated in collective shelters including **490 schools** (365 public, 77 private, and 48 TVET) that host IDPs and therefore unavailable for learning.

Education partners have continued to provide support through the distribution of learning materials, reaching thousands of children across regions. Approximately **72,500 internally displaced children** inside and outside shelters have been reached through the distribution of **1,456 education kits or supplies across the country**.



Food Security & Agriculture

Since the escalation began on 2 March 2026, food security partners mobilized rapidly to deliver lifesaving assistance to people displaced across the country. Partners immediately launched food distributions inside shelters, and have so far provided a total of **4.4 million hot and cold meals**, while also providing **73,000 ready-to-eat (RTE) kits** containing items that do not require cooking—such as canned meat, cheese, hummus, and beans—to help families meet their immediate food needs.

The sector has issued ad hoc recommendations to ensure a harmonized and streamlined response across all activities. This includes in-kind food assistance—such as hot and cold meals, RTE items, food parcels, and

kitchen support with fresh ingredients (within collective shelters or in hard-to-reach areas)—as well as cash assistance and Multi-Purpose Cash Assistance (MPCA) provided outside collective shelters, in coordination with the Cash Working Group.

The sector introduced a dashboard that provides up-to-date information on food assistance delivered inside collective shelters. It tracks partners' daily distributions, including an average of 130,000 meals provided each day, ensuring comprehensive coverage for all displaced people residing in shelters. The dashboard also reports on the allocation of RTE kits across these sites.

Dashboard: https://analytics.wfp.org/t/Public/views/2026_LB_Emergencytracker/ERLebanon2026



Health

Continued attacks on healthcare were reported during and following the deadliest day of the ongoing conflict on 8 April 2026, in violation of International Humanitarian Law and breach of UN Security Council Resolution 2286, which mandates the protection of health personnel and facilities. **Since the renewed hostilities, the Surveillance System for Attacks on Health Care (SSA) has recorded 119 attacks, resulting in 76 deaths and 176 injuries among health workers.** These attacks not only place frontline responders at grave risk but also critically undermine patient safety and access to essential healthcare services.

As of 10 April, primary healthcare outreach continues through **209 outreach units** (PSUs/MMUs) linked to **185 PHCCs**, supporting service delivery across **634 collective shelters nationwide**. Access to PHC services remains at scale, with **99,569 consultations provided**, including 60,638 IDPs receiving medications. Chronic disease care continues to be prioritized, with **25,446 IDPs supported through chronic medication services**. Essential preventive and priority services remain ongoing, including **vaccination of 4,327 IDP children** (administering 9,072 doses) and **2,310 antenatal care consultations**. However, service disruptions persist, with **59 PHCCs currently closed**, while six PHCCs remain operational for chronic and emergency care only.

UN Women's Rapid Gender Analysis, conducted in March 2026, further highlights the importance of maintaining **access to maternal and newborn care for pregnant and breastfeeding women in displacement**, including post-partum support and essential supplies, particularly in a context of movement constraints and pressure on the health system.



Nutrition

14,799 children under five, adolescent girls, and pregnant and breastfeeding women were reached with emergency nutrition rations and micronutrient supplementation sufficient for one month in 501 shelters out of which approximately 99 children aged 6-11 months were reached with age-appropriate complementary feeding packages. **8,263 children under five and pregnant and breastfeeding women** were screened for wasting. So far, **165 children under 5 years of age and 72 women have been identified with wasting** and referred for life saving treatment. Through the recently developed Infant and Young Child Feeding (IYCF) chatbot link, 524 caregivers have accessed guidance on optimal feeding practices in emergencies, thus complementing in-person counselling and enhancing the timeliness of referrals for caregivers in need of counselling. In parallel, 246 caregivers contacted the national IYCF hotline, of whom 161 were referred for additional specialized support. Overall, more than 5,349 caregivers of children under 5 years were reached with specialized IYCF, nutrition, and Early Childhood Development (ECD) counselling and awareness on optimal nutrition practices in an emergency.

The nutrition sector has enhanced the **integration of essential nutrition and Early Childhood Development (ECD) interventions across multiple service delivery platforms in Lebanon, including Primary Healthcare Centres (PHCCs) and their Satellite Units (PSUs)**. To date, **40 nutritionists have been deployed across 40 PSUs**, delivering nutrition interventions across 111 shelters and 69 shelters reached through education partners providing integrated nutrition and ECD services

Challenges: Five PHCCs providing wasting treatment remain non-operational, disrupting access to life-saving services. In addition, widespread displacement has resulted in at least 92 children under five and 146 pregnant and breastfeeding women defaulting from treatment due to insecurity and transportation barriers.

Protection

Needs and risks: The prolonged escalation and displacement continue to heighten **psychological distress, inter-communal tensions and protection risks**, including growing tensions over housing and assistance. These pressures have, in some cases, led to tensions within collective sites and between displaced populations and site management. IDPs living outside collective shelters, particularly in urban areas and informal settings, face increased exposure to protection risks due to inadequate shelter and limited access to WASH services.

Response: As of **13 April**, Protection, Child Protection (CP) and GBV partners have reached **96,534 displaced individuals** with core protection services, including **45,100 IDPs** through awareness and information sessions, **35,253 people** with case management and mental health and psychosocial support, **10,414 women and girls** with dignity kits through GBV activities, and **1,011 cash grants** benefiting approximately **4,595 individuals**. CP partners continue to follow up on children affected by recent attacks, including **family tracing and reunification** following the dissemination of CP hotlines.

Gaps and constraints: Significant gaps persist. **Safe, inclusive and accessible shelter** remains a critical challenge, particularly for vulnerable Lebanese and non-Lebanese populations living outside collective sites. Coverage limitations are increasing as the number of shelters expands; while protection partners cover approximately **79 per cent** of collective sites, **dedicated GBV and general protection services are lacking in around 42 per cent**. Protection monitoring outside collective shelters remains **resource-intensive**, and delivery of MHPSS and recreational activities for children is severely constrained in open or overcrowded settings. Access to **Women and Girls Safe Spaces** and consistent caregiver engagement have further declined due to insecurity, displacement fatigue and limited space.

Partners continue to emphasize the need for **stronger cross-sectoral coordination within collective sites**, enhanced capacity of site focal points, improved **accountability mechanisms**, and targeted training for frontline responders to support safe identification and referral of high-risk cases. Persistent **funding gaps** continue to limit coverage and scale-up of protection services.

Increasingly, the need for dedicated funding analysis is required to reflect on sectoral vis-à-vis funding gaps.

Shelter

The ongoing response to address emergency shelter needs is reaching affected populations both inside and outside collective shelters. In collective shelters, where close to **52 per cent of the hosted population are women and girls**, shelter assistance remains critical to ensuring dignified living conditions. Overall, Shelter partners have distributed **112,708 mattresses** and **138,821 blankets**, among other core relief items (CRIs).

Across collective sites in all governorates, shelter partners have distributed **96,492 mattresses, 115,881 blankets, 50,783 sleeping mats, 42,796 pillows**, as well as approximately **11,206 solar lamps** and **8,740 jerry cans**. CRI response in collective shelters, as reported by subnational DRRs, has successfully reached all identified households in need as part of an initial round of assistance. Ongoing support is being continuously delivered based on daily referrals from DRRs and MoSA, targeting new arrivals in existing sites as well as populations in newly activated collective shelters. In addition, the CRI distribution outside collective sites is being informed by assessed needs and referrals of vulnerable households. This support was delivered on a case-by-case basis and includes **16,216 mattresses, 22,940 blankets, and 9,482 pillows**.

In addition, the **Shelter Sector has assigned 643 collective sites to shelter partners**. Of these, **452 sites** have been assessed to identify repair needs, partitioning requirements to increase hosting capacity and improve privacy, and any upgrades required to ensure the sites are adequate to host displaced families, with partners proceeding with the necessary works accordingly. A total of **302 technical submissions** has been made to secure approvals to initiate repairs from the relevant authorities/ focal points, of which **260** have been approved and works have already commenced inside **217 sites**, of which **88 have been completed**.



Water, Sanitation, and Hygiene (WASH)

WASH partners have delivered assistance in **630 collective shelters**, reaching **179,974 IDPs**, ensuring continued access to safe water, sanitation, and hygiene services in high-density and high-risk environments. The scale-up of assistance is helping to mitigate public health risks associated with overcrowding, limited water access, and inadequate hygiene conditions.

To date, **66,237 hygiene kits** and **30,613 menstrual hygiene kits** have been distributed across 682 shelters, supporting essential hygiene practices and reducing the risk of communicable diseases. In parallel, **1,149,226 litres of bottled drinking water** and **30,060 m³ of water through water trucking** have been delivered to 568 shelters, addressing immediate drinking water needs in sites with limited or disrupted supply.

In addition, **654,649 litres of fuel have been provided to Water Establishments**, sustaining public water supply services for **529,297 people**. WASH partners have also supported 175 water stations with fuel, repairs, and spare parts to maintain operations, which is critical to sustaining network functionality under increased demand and reducing reliance on more costly emergency water supply modalities.



Social Stability

The Tensions Monitoring System (TMS) at UNDP is issuing the [Tensions Pulse](#), which provides decision-makers and humanitarian actors with timely, evidence-driven insights to support planning and adaptive responses. The Pulse features a **Tensions Dashboard, analysis of online narratives, a map of geographical hotspots, and a “What to Watch” section highlighting emerging issues**. It is based on analysis generated through UNDP’s TMS, which combines open-source and social media monitoring with field inputs coordinated alongside government counterparts and partner organizations.

Social stability partners initiated **focus group discussions led by women peacebuilders** across key locations in North Lebanon, Mount Lebanon (Chouf–Aley), Baalbek-Hermel, and South Lebanon, generating real-time insights into rising social, security, and sectarian tensions. These tensions are particularly linked to overcrowding, aid distribution, economic pressures, and perceived inequalities between displaced and host communities. The discussions also underscore the active role of women peacebuilders in de-escalating tensions, coordinating with local actors, and providing psychosocial support. To date, **43 women peacebuilders have participated across four regions**: Tripoli, Baalbek-Hermel, South Lebanon, and Chouf–Aley.



Logistics and Telecommunications

Within the [LTC Logistics response](#), **49 organizations were supported** through coordination, information management, and access to shared logistics services. A total of **717 m³ of humanitarian cargo** was received at the common warehouse, and **nine convoys reached hard-to-access areas**, delivering **354 metric tonnes of relief items**, including shelter and household non-food items, hygiene, health and dignity kits, water, wheat flour, and food assistance. Advanced visibility of [planned convoy locations](#) is important to enable effective area-based responses. Knowing where access is anticipated allows sectors to align interventions, jointly prioritize locations, and ensure complementary multi-sectoral assistance reaches affected populations.

The **EU Humanitarian Air Bridge continues to support the humanitarian supply chain** by offering an alternative transport option when overland routes are limited or disrupted. The Cluster maintains close coordination with the Air Bridge mechanism to support preparedness for potential shifts in access conditions, including alternative delivery arrangements if required. With **two additional flights planned for 23 April and 9 May**, early awareness and engagement by the humanitarian community helps inform forward planning for further potential airlift support.

GENERAL COORDINATION

Coordination efforts continued during the reporting period to support a coherent, Government-led humanitarian response to the escalation of hostilities. The **Inter-Sector Coordination Group (ISCG)** convened regularly at national level to facilitate information-sharing, align sectoral priorities and address emerging operational constraints, in close collaboration with line ministries and humanitarian partners. ISCG co-chairs and sector leads maintained **daily engagement at the National Operations Room (Grand Serail)** to support real-time coordination with the **Disaster Risk Management (DRM) Unit** and relevant authorities.

Efforts to strengthen **information management and needs analysis** progressed during the period. The **Emergency Rapid Needs Assessment (ERNA)** for populations inside and outside collective shelters was endorsed by the **Ministry of Social Affairs (MoSA)**, with rollout commencing in coordination with OCGs, sectors and government counterparts. The assessment aims to support harmonized targeting, improve evidence-based prioritization and inform response planning across sectors.

As the operational environment remains highly volatile, coordination structures continue to prioritize **flexibility, rapid information-sharing and de-duplication of efforts**, while advocating for sustained humanitarian access, protection of civilians and humanitarian personnel, and adequate resourcing to meet growing needs.