

# Remaining Hazardous Areas in South Sudan as of 31 May 2026



Situation Mapped by  
Number of Clearance Tasks per Payam



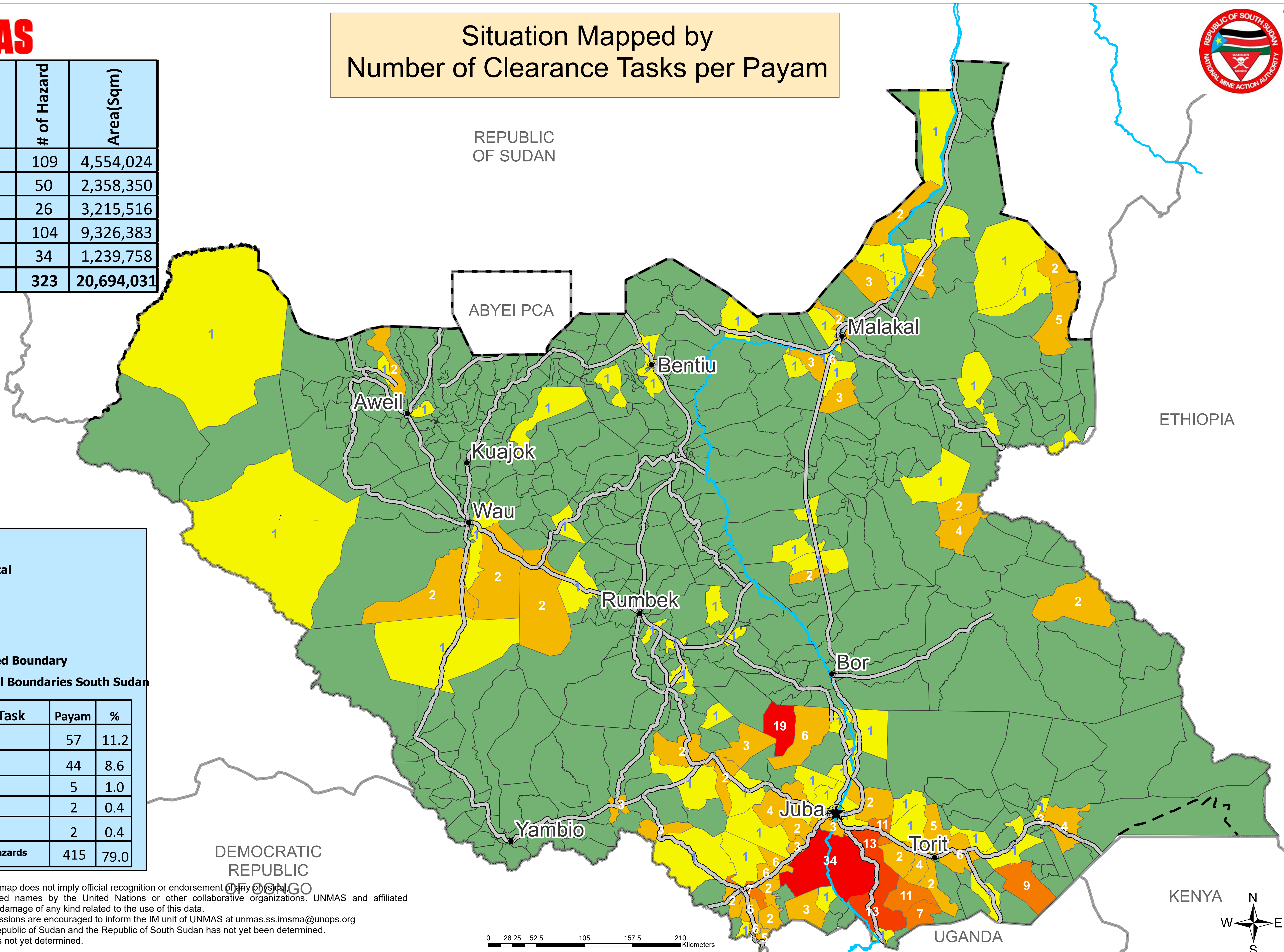
Open Hazard	# of Hazard	Area(Sqkm)
AP Mines	109	4,554,024
AT Mines	50	2,358,350
Mined Road	26	3,215,516
Cluster Munitions	104	9,326,383
Battlefield	34	1,239,758
<b>Total</b>	<b>323</b>	<b>20,694,031</b>

**LEGEND**

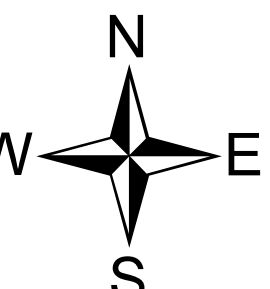
- ★ Country Capital
- State Capital
- River Nile
- Major Roads
- - Undetermined Boundary
- ▭ International Boundaries South Sudan

# of Clearance Task	Payam	%
1	57	11.2
2 - 6	44	8.6
7 - 11	5	1.0
12 - 16	2	0.4
Above 16	2	0.4
No Known Hazards	415	79.0

The information shown on this map does not imply official recognition or endorsement of any physical political boundaries or featured names by the United Nations or other collaborative organizations. UNMAS and affiliated organizations are not liable for damage of any kind related to the use of this data. Users who notice errors or omissions are encouraged to inform the IM unit of UNMAS at [unmas.ss.imsma@unops.org](mailto:unmas.ss.imsma@unops.org). Final boundary between the Republic of Sudan and the Republic of South Sudan has not yet been determined. Final status of the Abyei area is not yet determined.



0 26.25 52.5 105 157.5 210 Kilometers



# Remaining Hazardous Areas in South Sudan as of 31 May 2026



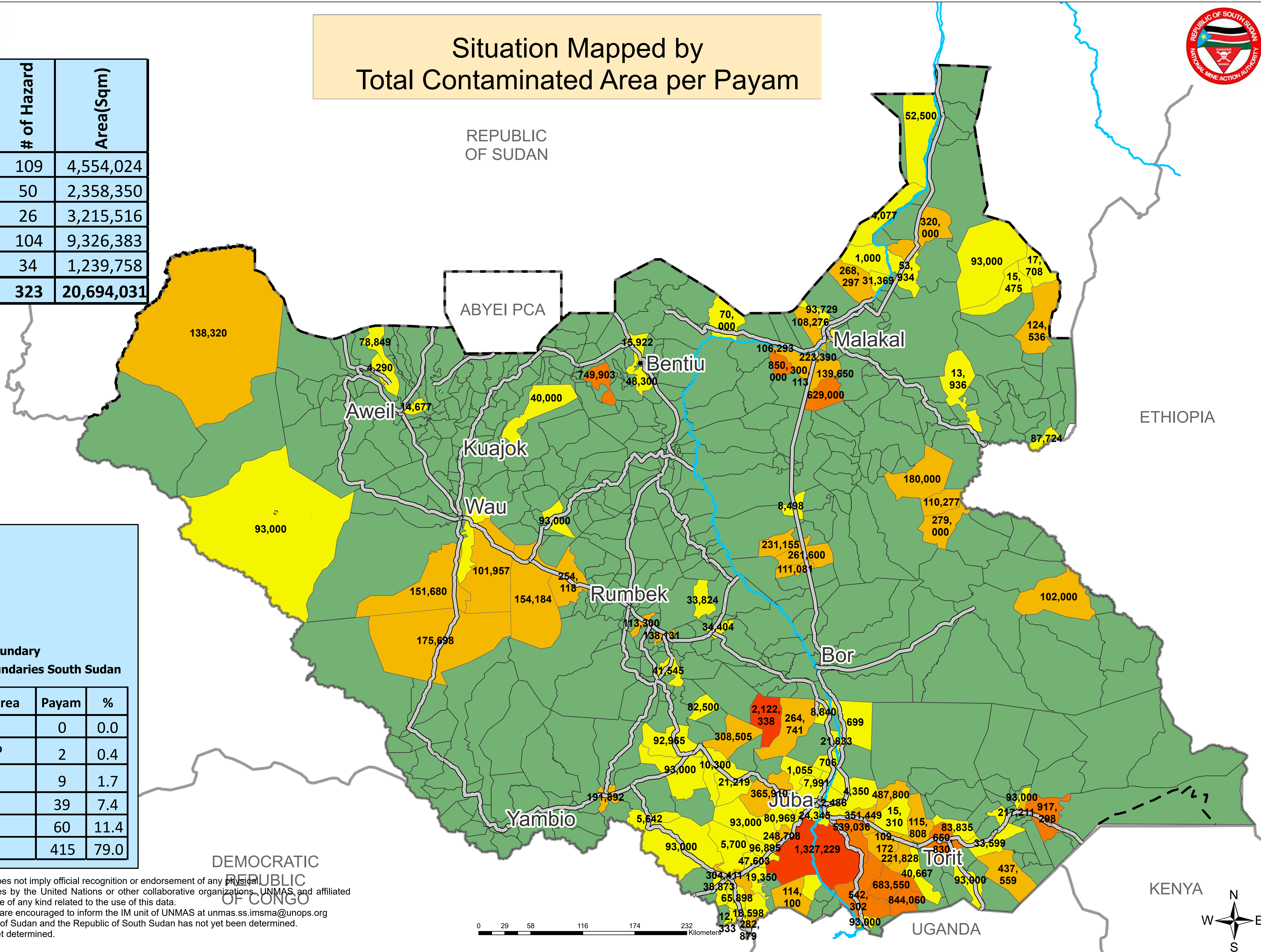
## Situation Mapped by Total Contaminated Area per Payam

Open Hazard	# of Hazard	Area(Sqm)
AP Mines	109	4,554,024
AT Mines	50	2,358,350
Mined Road	26	3,215,516
Cluster Munitions	104	9,326,383
Battlefield	34	1,239,758
<b>Total</b>	<b>323</b>	<b>20,694,031</b>

**LEGEND**

- ★ Country Capital
- State Capital
- River Nile
- Major Roads
- - - Undetermined Boundary
- International Boundaries South Sudan

Total Contaminated Area	Payam	%
Above 3,000,000 Sqm	0	0.0
1,000,000 - 3,000,000	2	0.4
500,000 - 1,000,000	9	1.7
100,000 - 500,000	39	7.4
Up to 100,000 Sqm	60	11.4
No Known Hazards	415	79.0



The information shown on this map does not imply official recognition or endorsement of any physical, political boundaries or featured names by the United Nations or other collaborative organizations. UNMAS and affiliated organizations are not liable for damage of any kind related to the use of this data. Users who notice errors or omissions are encouraged to inform the IM unit of UNMAS at [unmas.ss.imsma@unops.org](mailto:unmas.ss.imsma@unops.org). Final boundary between the Republic of Sudan and the Republic of South Sudan has not yet been determined. Final status of the Abyei area is not yet determined.

0 29 58 116 174 232 Kilometers

