

This report is produced by OCHA Lebanon Office in collaboration with Inter-Sector Coordination Group under 2026 Lebanon Response Plan (LRP) Framework.


### KEY FIGURES



**>1,049 K (MoSA)**  
self-registered  
Internally Displaced  
People (IDP)



**129,721 (DRM)**  
displaced in  
collective shelters



**632 (DRM)**  
shelters



**2,896 (MoPH)**  
people killed

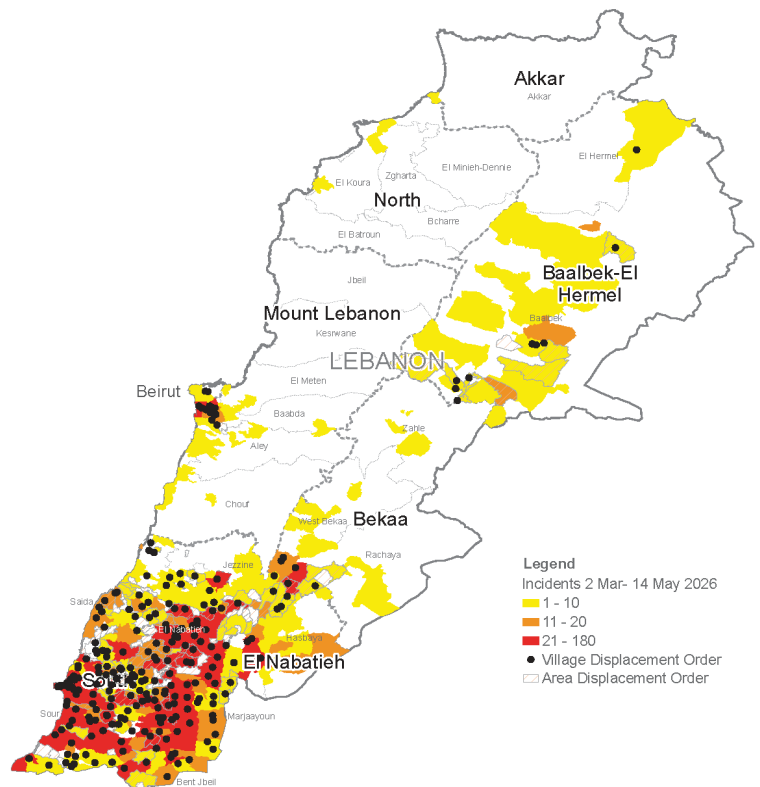


**8,824 (MoPH)**  
people injured

### HIGHLIGHTS

- 2,896 have been killed and 8,824 injured since 2 March.
- Another attack on healthcare killed two and injured another healthcare worker.
- Renewed displacement orders announced for at least 18 additional localities, triggering further displacement.
- Ten new shelters were opened in a three-day period to respond to growing number of displaced.
- Flash Appeal is only 42 per cent funded, putting critical services at risk of interruption.

### CONFLICT INTENSITY MAP of 14 May



The boundaries and names shown and the designations used on this map do not imply official endorsement or acceptance by the United Nations.  
 Creation date: 15 May 2026 Source: incidents: public media  
 Feedback: ocha@lebanon@un.org www.unocha.org www.reliefweb.int

### SITUATION OVERVIEW

Despite the ceasefire announced on 17 April, the humanitarian situation in Lebanon remained highly unstable during the reporting period. **Hostilities continued across southern Lebanon**, accompanied by renewed displacement orders affecting multiple localities, further undermining civilian protection and prospects for safe returns.

**Since the onset of hostilities on 2 March**, at least 2,896 people have been killed and 8,824 injured as of 14 May. The intensity of attacks escalated during the reporting period. The United Nations Emergency Relief Coordinator [highlighted](#) the urgency of the situation, stressing that affected populations require a sustained and genuine ceasefire.

On 14 May, the Humanitarian Coordinator (HC), Imran Riza, visited Beirut's southern suburbs (Dahieh) and observed **widespread destruction, major infrastructure damage, and large-scale displacement affecting around half of the population**, alongside complex return patterns and overcrowded, inadequate shelter conditions. The HC highlighted **severe and growing humanitarian needs**, including loss of homes and livelihoods, disrupted basic services, and rising psychosocial distress. Based on these findings, the HC called for an **urgent scale-up of humanitarian assistance**, restoration of essential services, and **immediate support for early recovery**, while emphasizing stronger coordination with municipalities and a **more inclusive, decentralized response** to enable safe and dignified returns.

Attacks on healthcare and humanitarian personnel persisted. Since 2 March, **161 incidents affecting healthcare have been recorded**, resulting in 110 deaths and 252 injuries among healthcare workers. Following the ceasefire announcement, at least 15 additional incidents were reported, causing further casualties. Three hospitals and 42 primary healthcare centres remain closed due to ongoing insecurity, significantly constraining access to essential services. During the reporting period, two paramedics were killed and one injured in airstrikes in Nabatieh governorate, further affecting emergency response capacity.

**Displacement levels increased following the deterioration in security conditions.** During the reporting period, renewed displacement orders were issued for eighteen localities in southern Lebanon and the Bekaa governorate, triggering additional population movements. As of 14 May, approximately 129,721 people are reported to be sheltering in 632 collective shelters.

**Displacement patterns remain fluid**, with continued movements between areas of origin and displacement sites. A number of families who attempted to return to their homes were unable to do so due to widespread damage, prompting secondary displacement back into collective shelters or informal arrangements. This has contributed to rising shelter occupancy and increased pressure on already limited capacity.

**Access constraints persist across parts of southern Lebanon and Nabatieh governorates**, where insecurity and infrastructure damage continue to impede humanitarian operations. Since the escalation began, **131 humanitarian movements carrying essential supplies have been facilitated** through the Humanitarian Notification System.

**Efforts to scale up the response continued** during the reporting period, including the arrival of humanitarian supplies. On 11 May, **more than 4,500 emergency shelter and household items were [airlifted](#) from Maastricht**, Netherlands, to Beirut through the European Union Humanitarian Air Bridge.

**Humanitarian partners continue to face growing operational pressure** to sustain assistance in displacement settings while expanding support to newly affected and hard-to-reach areas.

**Funding constraints remain a major challenge.** As of mid-May, the 2026 Lebanon Flash Appeal has received approximately US\$129 million out of the US\$308 million required (42 per cent funded). The funding gap is limiting the ability of partners to maintain essential services and scale up the response. **Critical sectors, including water, sanitation and hygiene (WASH), face the risk of service interruptions in the coming months**, particularly in relation to water provision in collective shelters and support to public water systems.

## HUMANITARIAN RESPONSE

---

**Humanitarian partners, in coordination with national authorities, continue to scale up the delivery of life-saving assistance** across conflict-affected areas, despite a highly volatile operating environment and ongoing population displacement. Response efforts are focused on providing multi-sectoral support to affected populations both within collective shelters and in host communities, with prioritization of areas most impacted by recent hostilities in southern Lebanon.

**Assistance is being delivered through a combination of in-kind support and multipurpose cash assistance** to address urgent needs while preserving flexibility for affected households. Since the onset of the escalation, partners have provided large-scale food assistance, including the distribution of over **9.2 million hot and cold meals, ready-to-eat rations and food parcels**, alongside continued pre-positioning of supplies to ensure continuity of assistance.

In parallel, **shelter partners have supported tens of thousands of displaced households through the distribution of core relief items** such as mattresses, blankets, and other essential household items, while undertaking rehabilitation and upgrades of collective shelters to improve safety and living conditions.

**Access to essential services is being maintained through health, WASH, and protection interventions.** Mobile medical teams and primary healthcare centres continue to provide consultations, medications, and vaccination services, while WASH partners are supporting safe water access through water trucking, rehabilitation of water systems, and the provision of hygiene kits and sanitation facilities in collective shelters. Protection partners deliver psychosocial support, case management services, and awareness activities, including for children and other vulnerable groups.

**Facilitation of humanitarian access to hard-to-reach areas continues** through coordinated mechanisms, including the Humanitarian Notification System, which has enabled the delivery of essential supplies such as food, water, fuel, and medical items to conflict-affected communities.

At the same time, **partners are adapting response modalities to address increasingly complex displacement dynamics**, including support to newly displaced populations and those experiencing secondary or repeated displacement. Efforts are also focused on sustaining essential services in overstretched collective shelters while expanding assistance to vulnerable populations outside formal shelter settings.

**Ongoing insecurity, movement restrictions, and infrastructure damage continue to affect the ability of humanitarian actors to reach all people in need.** Operational constraints, combined with significant funding shortfalls, are limiting the scale and sustainability of the response at a time when humanitarian needs continue to rise.



### Access and Civil-Military Coordination

---

Humanitarian partners, supported through the Humanitarian Notification System (HNS), continue to reach civilian populations in conflict-affected and hard-to-reach areas across southern Lebanon and other impacted locations.

Between 2 March and 14 May, **131 HNS-facilitated humanitarian movements** enabled access to communities across Lebanon, including Qlaiaa, El Nabatieh, Baalbek, Qaa, the southern suburbs of Beirut, Marjaayoun, Jdeidat Marjaayoun, Hasbaya, Chebaa, Ain Ebel, Tyre (including Palestinian camps), Rmeish, Ebel El Saqi, Fardiss, Bourj El Moulouk, Tebnine, Kaoukba and Souk El-Khan, among others. Of these, **101 movements to areas south of the Litani River (SLR)** were facilitated through existing notification arrangements and close coordination with United Nations Interim Force in Lebanon (UNIFIL) under prevailing operational modalities.

These movements enabled the delivery of **essential life-saving assistance**, including bread, fresh produce, flour, safe drinking water, fuel, medical supplies, and core relief items and kits. Where feasible and when requested, humanitarian actors also supported the **relocation of vulnerable individuals** from high-risk areas to safer locations.

The operational environment remains highly volatile and unpredictable, with ongoing hostilities, and evolving movement restrictions particularly in the Israeli-declared military zone in southern Lebanon. Humanitarian teams reported degraded road conditions, damaged infrastructure, communications disruptions, Global Positioning System (GPS) spoofing, Unexploded ordnances (UXO) contamination, conflict debris, and rapidly changing route conditions that frequently required last-minute adaptations and real-time coordination support. Several missions experienced postponements, narrow operational windows, or route-related restrictions, while others encountered nearby hostilities and ongoing military activity during implementation.

These observations highlight that, despite sustained humanitarian efforts, civilians living in these hard-to-reach areas are facing significantly greater challenges in accessing basic services, safe mobility, communications, medical care, and humanitarian assistance on a daily basis.



### Multipurpose Cash Assistance

Distribution of blanket emergency multipurpose cash assistance continues through Cash Working Group (CWG) partners. To date, **a disbursement of USD 15.6 million reached 138,000 households** through the Government-led Shock Responsive Social Safety Net (SRSN). While emergency MPCA support has been extended to conflict-affected **non-Lebanese populations, reaching 518 households, with a total disbursement of USD 50,730.**



### Education

As of 14 May, **approximately 164,059 internally displaced children** have accessed **formal education online, while 94,067 attended in-person classes.** In addition, **4,222 children have been supported through non-formal education.** Education partners distributed **1,694 education kits** reaching approximately **84,700 children.** A further 764 affected children received individual student kits and/or learning materials, and 49 children with disabilities received assistive devices and/or rehabilitation and therapy services.

The Ministry of Education and Higher Education (MEHE) confirmed that **official national examinations will proceed**, with registration open until 15 May. Syrian and other non-national students, regardless of residency status, are permitted to register for intermediate and secondary certificate examinations upon submission of certified educational documents.

Based on field observations inside and outside collective shelters, partners are equipped to deliver targeted trainings covering staff well-being and burnout prevention, inclusive approaches for children with diverse needs, psychosocial support, and referral pathways. These efforts aim to strengthen the capacity of frontline workers responding to education in emergencies needs.

The continuity of online learning remains constrained by poor connectivity and limited access to devices. In response, MEHE is prioritizing in-person learning and is approving partners to implement learning activities directly within shelters.

Continued donor support remains critical to scale up learning hubs, trainings, and the distribution of learning materials, particularly to reach children in hard-to-reach areas.

## Food Security & Agriculture

---

Since the escalation of hostilities on 2 March 2026, food security partners have mobilized rapidly to deliver life-saving assistance to displaced populations across the country. Partners immediately launched food distributions inside collective shelters and, to date, have provided **over 9.2 million hot and cold meals. In addition, 120,936 ready-to-eat (RTE) rations**, containing items that require no preparation, have been distributed to help families meet their immediate food needs.

Needs outside collective shelters have significantly worsened. Official requests were received from the Beirut and Mount Lebanon Governors' Offices to support displaced populations with immediate in-kind food assistance. The sector is currently assessing needs, while simultaneously advocating with the Ministry of Social Affairs (MoSA) for the Government-led Shock Responsive Social Safety Net (SRSN) subject to available funding.

The self-cooking initiative inside shelters is discussed with the Food Safety Task Force to secure all required approvals and ensure that protocols across the four concerned ministries are endorsed. The initiative is expected to begin with a pilot phase in 10 shelters during the first week of June.

As the situation continues to evolve, and in anticipation of further access constraints, the sector is working with partners to pre-position food supplies and essential commodities in areas with challenging or unstable access. Pre-positioning enables partners to ensure the continuity and reliability of food assistance over an extended period should humanitarian access become further restricted.

## Health

---

Since the onset of hostilities on 2 March, **161 attacks on healthcare** resulted in **110 deaths and 252 injuries among health workers**. These ongoing and systematic violations underscore the urgent need to protect medical personnel and health facilities, and to ensure full compliance with international humanitarian law.

**On 12 May**, Ministry of Public Health recorded **another attack on healthcare**, resulting in **two deaths and one injury among health workers**. This is a fifteenth attacks since the announcement of the ceasefire, all of which have killed 12 and injured 21 health workers since 17 April.

As of 11 May, primary healthcare outreach support continues through **211 outreach units** (Primary Satellite Units (PSUs) or Mobile Medical Units (MMUs)) linked to **185 Primary Health care centres (PHCCs)**, supporting service delivery.

Access to PHCC services remains at scale, with **296,215 consultations** provided, and **110,069 IDP receiving medications**. Chronic disease care continues to be prioritized, with **48,851 IDP supported through chronic medication services**. Essential preventive and priority services remain ongoing, including **vaccination of 9,840 IDP children** and **4,756 antenatal care consultations**.

**Health facility closures continue to limit access to healthcare**. Three hospitals and 42 PHCCs remain closed, while 6 PHCCs are operational for chronic disease management and emergency care only, placing additional strain on remaining functional facilities and limiting access to services, particularly in areas of return.

## Nutrition

Challenges in reaching displaced children and pregnant women residing outside collective shelters remain, limiting coverage and the ability to adequately meet the needs of the most vulnerable.

Since the onset of the escalations, a total of **19,869** children under five, adolescent girls, and pregnant and lactating women **received one month of emergency nutrition rations and micronutrient supplementation**.

The national Infant and Young Child Feeding (IYCF) hotline received 522 calls from caregivers; **394 cases were referred** for specialized support of infant and young child feeding services. Meanwhile, more than **11799 caregivers** of children under five benefited from **counselling and awareness** activities on IYCF, nutrition, and Early Childhood Development (ECD) through in person and digital platforms.

To date, the Nutrition Sector has been supporting the Ministry of Public Health in the provision of unbranded infant formula through a targeted approach for infants under one year of age. So far, **1,277 tins** were distributed to **154** out of 610 assessed **children** and were identified as requiring formula feeding support using IYCF assessment tools, provided with tailored counselling. In addition, **84 Breast Milk Substitutes (BMS) kits** were provided to support the safe preparation and use of formula milk in shelters where hygienic conditions and essential tools are limited.

## Protection

Displacement dynamics remain fluid, non-linear, and highly area specific. Increased insecurity and safety risks in the South and Nabatiyeh governorates, continue to place significant strain on the response, humanitarian access, and staff well-being.

While the situation is driving acute protection risks and new waves of displacement in the South and Nabatiyeh governorates, protection monitoring findings in Bekaa and Baalbek-EI Hermet governorates indicate an increasingly protracted displacement, with many people unable to return to their areas of origin. In the North Governorate, an increased number of people are seeking safety in collective shelters since the announcement of a ceasefire on 17 April, leading to reopening of previously closed collective shelters (CSs).

**Legal vulnerability** due to the lack of documentation or legal status, **housing insecurity**, substandard **displacement conditions**, high levels of unmet basic needs, and the depletion of resources remain **key drivers of protection risks** among the affected people.

People, particularly women and girls, residing in tents, public spaces, or other open areas, remain the most at-risk, with urgent protection needs related to safe accommodation, access to water and sanitation facilities, and other essential services. Persons with disabilities continue to require tailored support.

Ongoing displacement and repeated population movements are disrupting continuity of care and complicating case follow-up according to the recent Gender-Based Violence Information Management System (GBVIMS) analysis also indicates that.

**Children have been disproportionately affected due to displacement**, exposure to violence, and insecurity, particularly in hard-to-reach areas. Approximately 390,000 children remain displaced. Family separation, loss of housing, income, and personal belongings have increased the risks of children being exposed to violence, exploitation, neglect, family separation, and harmful coping mechanisms, including child labour.

As of 14 May, 77 Protection, Child Protection (CP), and Gender-Based Violence (GBV) partners had reached **192,600 internally displaced persons** across the country, 61 per cent of whom were assisted inside collective sites. Prioritized services included community outreach, awareness-raising, and information sessions, reaching 89,651 people on topics including risky behaviours, bullying, GBV and safety risks, hygiene, shelter-related concerns, and access to protection services.

In addition, **68,528 people** - mostly children – participated in **mental health and psychosocial support (MHPSS) interventions, including recreational, developmental, and play-based activities**. This includes 1,320 at-risk children and adults received dedicated case management services. 1,925 protection cash grants were provided to address immediate protection risks. GBV partners provided 25,353 women and girls with dignity kits and GBV-specific awareness materials. Protection actors also scaled up dedicated support for **persons with disabilities, reaching 978 individuals with specialized care services or assistive devices**.

The lack of adequate Protection, CP, and GBV staffing is increasingly limiting the sector's ability to reach all people in need. Expanded access to targeted information, large-scale awareness campaigns, and dissemination of referral pathways are essential to improve access to services, reduce barriers, and strengthen prevention messaging.

## Shelter

The sector continues to face sustained pressure on limited core relief item (CRI) stocks, compounded by continuous, fluid, and often reversible displacement patterns. Repeated population movements are resulting in distributed items being left behind, while funding constraints are limiting partners' ability to provide replacement items to those in need.

To date, shelter partners have collectively supported 44,106 households, both inside and outside collective shelters, through the distribution of **127,028 mattresses, 166,816 blankets, and 67,054 pillows**, alongside other essential non-food items (NFIs), including **sleeping mats, solar lamps, and jerrycans**. Within collective shelters, distributions have included 105,123 mattresses, 132,212 blankets, and 53,776 pillows, along with additional items to support dignified living conditions. Initial CRI distributions have reached all households in shelters, while ongoing targeting of new arrivals continues through referral mechanisms. Outside collective shelters, assistance is being provided on a case-by-case basis, reaching vulnerable households with 21,905 mattresses, 34,604 blankets, and 13,278 pillows.

Shelter partners are currently undertaking repairs and **upgrades** across 385 **collective shelters**, both existing and newly established sites, of which **286 have been completed** to date. Interventions are focused on improving safety, capacity, and privacy for displaced populations.

**The Shelter Sector engaged with the Ministry of Social Affairs and the Ministry of Education and Higher Education (MEHE)** to present options for transitioning from the current reliance on collective shelters toward more sustainable shelter solutions. Discussions included a proposed approach to consolidate collective shelters, based on an analysis of Disaster Risk Management (DRM) data, with the aim of improving living conditions and service delivery efficiency.

Under this approach, households in sites with lower occupancy levels could be supported through alternative shelter solutions or relocated to consolidated sites. Feedback from both ministries will inform next steps in planning the future configuration of collective shelters and the prioritization of shelter interventions based on needs and operational feasibility.



## Site Management and Coordination (SMC)

In response to sustained humanitarian needs, the Ministry of Social Affairs (MoSA) is leading a scale-up of site management interventions with support from the International Organization for Migration (IOM). The Shelter Sector is working with the Site Management Coordination (SMC) Sub-Sector to align site care and maintenance activities.

The SMC Sub-Sector is mapping partner operational capacities as part of the process to establish the SMC Sub-Sector coordination structure. On 11 May, MoSA, together with IOM and SMC co-coordinators, conducted a visit to the Cite Sportive collective site to better understand overall site conditions and identify needs and gaps. Based on the discussions and observations during the visit, a list of recommendations is being developed to address the key findings.

In collective shelters hosting non-Lebanese displaced populations, IOM assisted 3,315 individuals through referrals to various services, including shelter, non-food items (NFIs), food assistance, cash assistance, cash-for-shelter support, and medical assistance.



## Water, Sanitation, and Hygiene

Since 2 March, WASH partners have delivered assistance in **615 collective shelters**, ensuring continued access to safe water, sanitation, and hygiene services in high-density and high-risk environments. Assistance is helping to mitigate public health risks associated with overcrowding, limited water access, and inadequate hygiene conditions.

To date, **95,954 hygiene kits**, **52,803 menstrual hygiene kits** and **1,394 cleaning kits for collective shelters** were distributed across shelters, supporting essential hygiene practices and reducing the risk of communicable diseases. To date, **3,765,725 liters of potable water** and **76,090 m<sup>3</sup> of water through water trucking** were delivered, addressing immediate drinking water needs in sites with limited or disrupted supply. Inside shelters activities to improve safe sanitation services were implemented through installation of a total of **92 external latrines** and **333 external showers**, in addition to providing **emergency desludging services**.

Partners provided **803,000 liters of fuel have been provided to Water Establishments**, sustaining public water supply services for **656,973 people**. WASH partners have also supported **256 water stations** with fuel, repairs, and spare parts critical to sustaining network functionality under increased demand and reducing reliance on more costly emergency water supply modalities, such as distribution of water bottles and water trucking.



## Social Stability

The overall tensions landscape remains critically elevated across multiple key drivers, showing an increasing trend alongside persistently elevated levels of host community pressure and shelter capacity strain.

Hostilities continue to widen geographically, multiple targeted strikes on vehicles in Mount Lebanon (Chouf) and Nabatiyeh raised serious concerns over the ability of residents in the south to access essential supplies, while a strike in Nabatiyeh killed two Civil Defence rescue workers, further exacerbating concerns over the protection of first responders.

The [Tensions pulse](#) aims to equip decision-makers and humanitarian actors with timely, evidence-driven insights to support informed planning and response adaptation.



## Logistics and Telecommunications

As of 14 May, the [Logistics Cluster](#) supported **51 humanitarian partners** through logistics coordination, common services, and information sharing. Common storage facilities have been made available to organizations to support both temporary storage and cargo consolidation for convoy operations. Logistics convoys are facilitated to support the movement of humanitarian assistance for UN agencies and international and national Non-Governmental Organizations (NGOs), reaching locations prioritized by the Operational Coordination Groups (OCGs) in close coordination with local authorities and sector leads. Live convoy schedules are shared by the Logistics Cluster on a [weekly](#) basis.

A total of **22 convoys were successfully delivered to hard-to-reach areas**, predominantly in the South. The Logistics Cluster **offloaded cargo across 16 municipalities**, which in turn served surrounding villages within the same Unions of Municipalities. Items transported included food, shelter, WASH, health, and protection supplies.

In addition to transporting and storage services, the Logistics Cluster provides real-time information on logistic constraints and information on telecommunications connectivity through the [Log.ie](#) platform which informs as well on the Logistics and Telecommunications operational plan, partner storage capacity, and guidance on environmentally sustainable logistics operations.

**On 7 May**, the Logistics Cluster facilitated its **first regional convoy from Amman to Lebanon**, transporting 165 pallets for partners. The convoy was organized in coordination with Jordanian and Lebanese authorities, enabling partners to move cargo across borders through facilitated customs processes, substantially reducing lead times and operational bottlenecks. The Logistics Cluster intends to provide this regional convoy service on a weekly basis, subject to partner demand, with the duration of the service contingent on the availability of funding.

Telecommunications related connectivity assessments were finalized and related results are informing the preparedness, identifying potential risks to operational continuity in the event of power outages, connectivity disruptions, movements to hard-to-reach areas, or disruptions affecting key operational hubs.

Current funding resources were planned to cover an initial three months of operations. Efforts are ongoing to mobilize additional funding for the Logistics and Telecommunications Cluster to ensure continuity of the above services beyond this initial period.

## GENERAL COORDINATION

Coordination efforts continue at both national and sub-national levels to support the response amid ongoing displacement and rapidly evolving humanitarian needs.

**The Inter-Sector Coordination Group (ISCG)** and **Operational Coordination Groups (OCG)**, in close engagement with Government counterparts, maintain regular coordination at national and sub-national levels to support strategic and operational planning, information sharing, and adaptive response adjustments. Discussions have focused on shelter pressures, service continuity, and access challenges in conflict-affected areas.

Data collection under the **Emergency Rapid Needs Assessment (ERNA)** has been **completed inside collective shelters** and is ongoing outside the formal shelter settings. Findings are expected to directly inform response prioritization, partner planning, and resource allocation decisions in the coming period.

A dedicated planning session for the **2026 Lebanon Flash Appeal extension** was convened with sector leads to discuss the evolving operational context and chart the way forward. Discussions covered overall scene-setting and planning outlook scenarios, initial findings from the ERNA, sectoral updates, and key operational priorities. The session also outlined concrete next steps to support a coordinated, evidence-based approach for the potential extension.