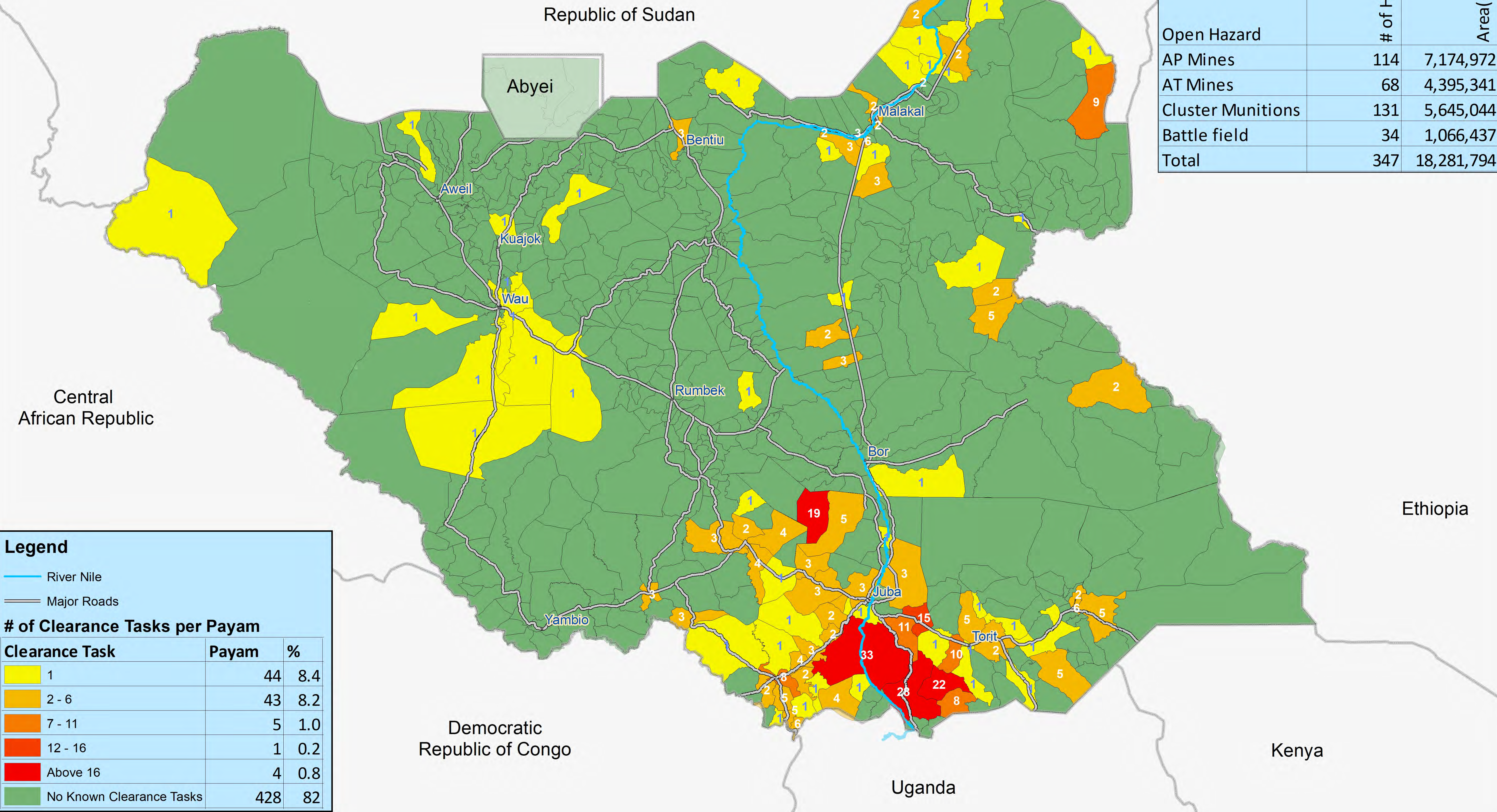


Remaining Hazardous Areas in South Sudan as of 28 February 2021



Situation Mapped by Number of Clearance Tasks per Payam



	# of Hazard	Area(Sqm)
Open Hazard		
AP Mines	114	7,174,972
AT Mines	68	4,395,341
Cluster Munitions	131	5,645,044
Battle field	34	1,066,437
Total	347	18,281,794

Legend

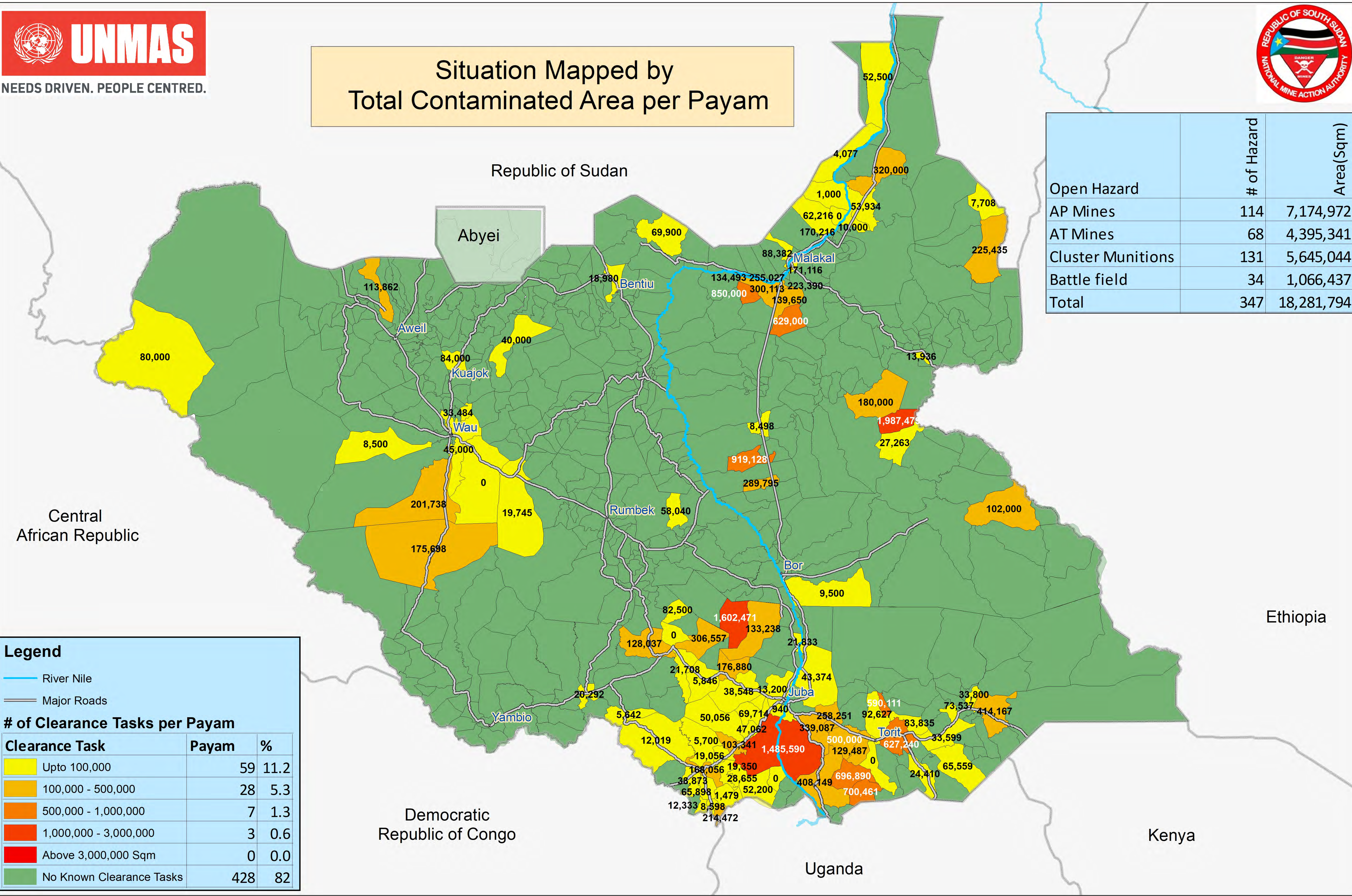
- River Nile
- Major Roads

# of Clearance Tasks per Payam			
Clearance Task	Payam	%	
1	44	8.4	
2 - 6	43	8.2	
7 - 11	5	1.0	
12 - 16	1	0.2	
Above 16	4	0.8	
No Known Clearance Tasks	428	82	

Remaining Hazardous Areas in South Sudan as of 28 February 2021



Situation Mapped by
Total Contaminated Area per Payam



	# of Hazard	Area(Sqm)
Open Hazard		
AP Mines	114	7,174,972
AT Mines	68	4,395,341
Cluster Munitions	131	5,645,044
Battle field	34	1,066,437
Total	347	18,281,794

Legend

- River Nile
- Major Roads

# of Clearance Tasks per Payam		
Clearance Task	Payam	%
Upto 100,000	59	11.2
100,000 - 500,000	28	5.3
500,000 - 1,000,000	7	1.3
1,000,000 - 3,000,000	3	0.6
Above 3,000,000 Sqm	0	0.0
No Known Clearance Tasks	428	82