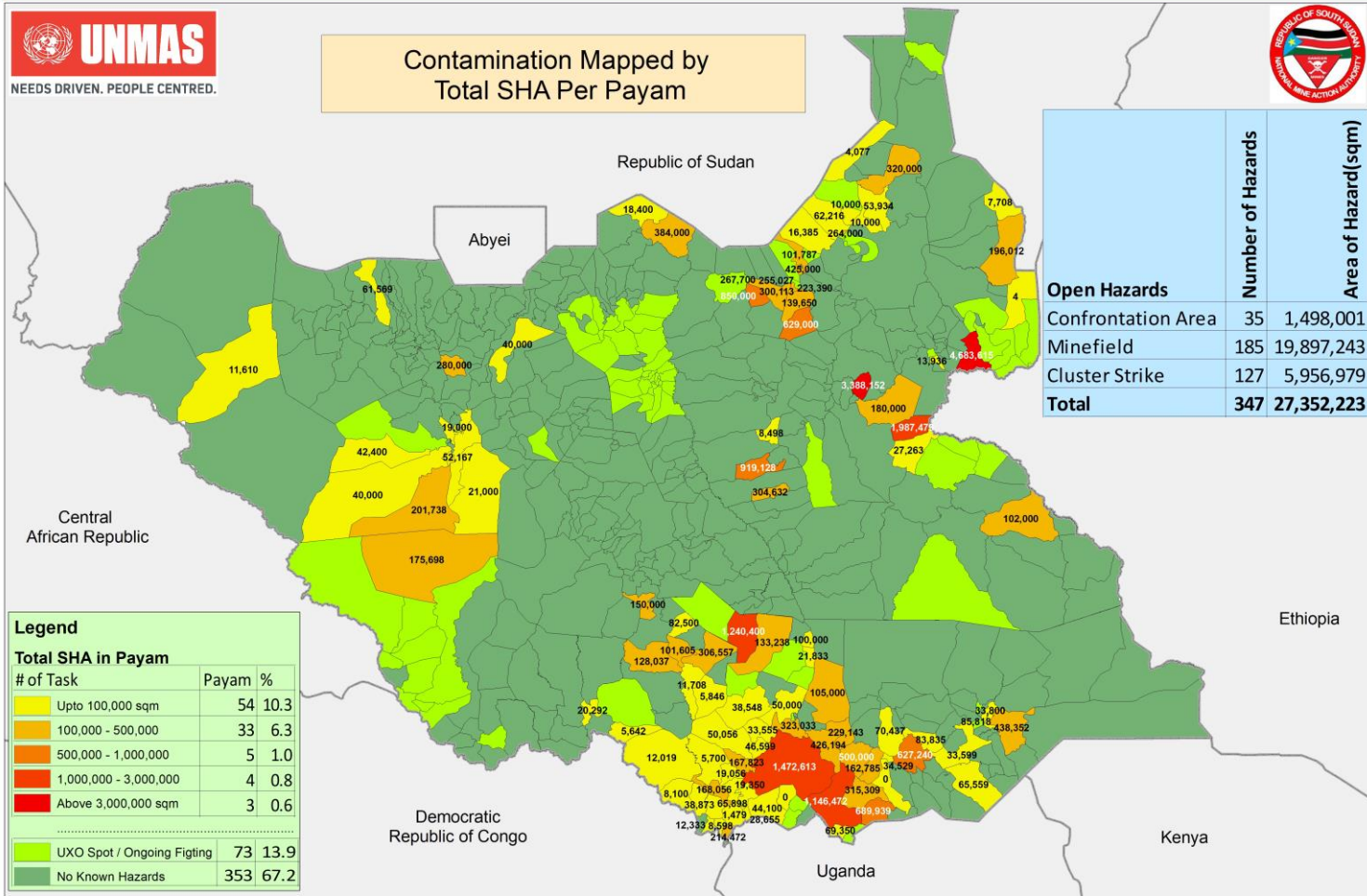


# Open Hazardous Areas in South Sudan as of 31 May 2019



Contamination Mapped by  
Total SHA Per Payam



Open Hazards	Number of Hazards	Area of Hazard(sqm)
Confrontation Area	35	1,498,001
Minefield	185	19,897,243
Cluster Strike	127	5,956,979
<b>Total</b>	<b>347</b>	<b>27,352,223</b>

**Legend**

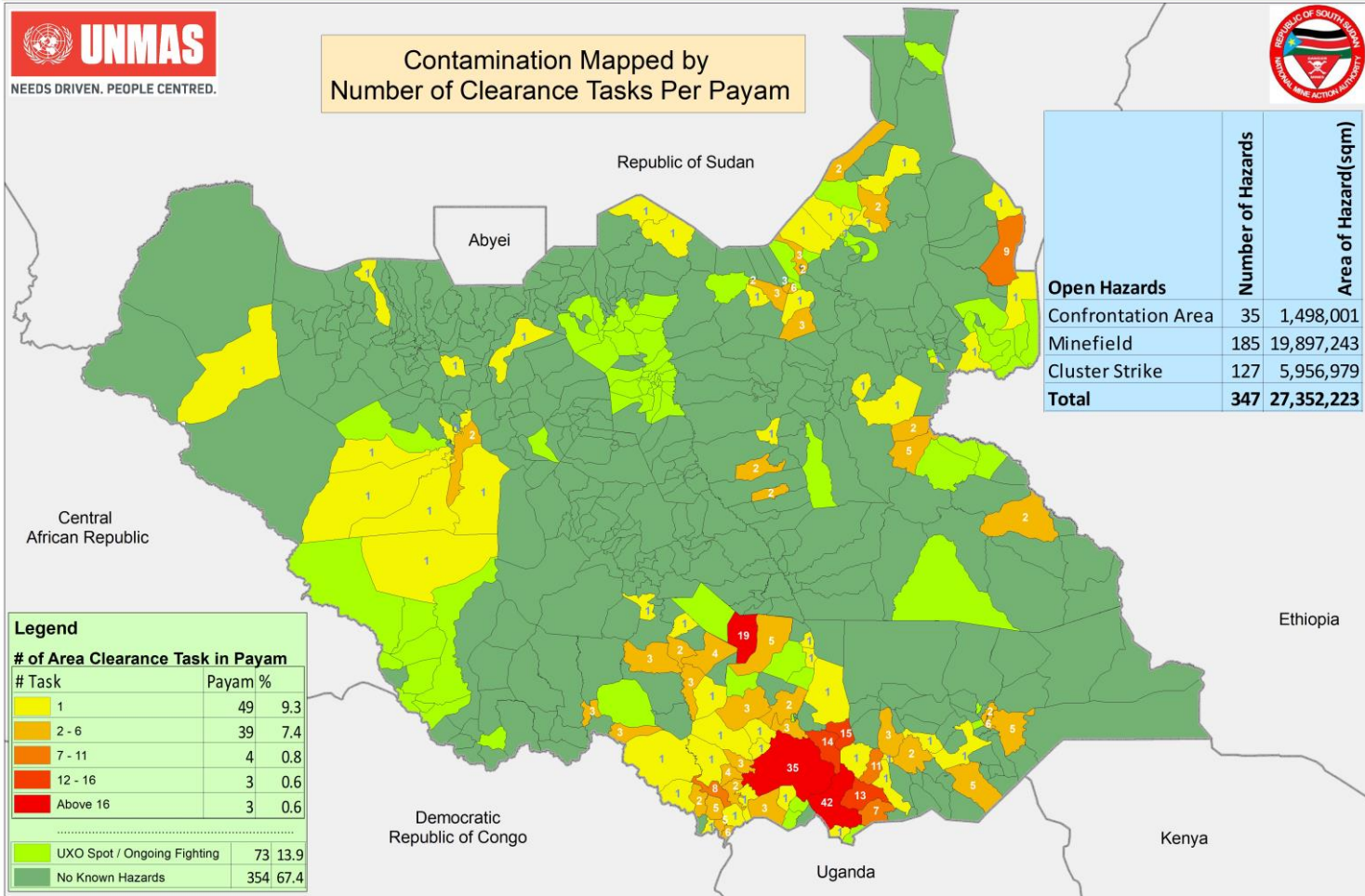
**Total SHA in Payam**

# of Task	Payam	%
Upto 100,000 sqm	54	10.3
100,000 - 500,000	33	6.3
500,000 - 1,000,000	5	1.0
1,000,000 - 3,000,000	4	0.8
Above 3,000,000 sqm	3	0.6
-----		
UXO Spot / Ongoing Fighting	73	13.9
No Known Hazards	353	67.2

# Open Hazardous Areas in South Sudan as of 31 May 2019



Contamination Mapped by  
Number of Clearance Tasks Per Payam



Open Hazards	Number of Hazards	Area of Hazard(sqkm)
Confrontation Area	35	1,498,001
Minefield	185	19,897,243
Cluster Strike	127	5,956,979
<b>Total</b>	<b>347</b>	<b>27,352,223</b>

Legend		
# of Area Clearance Task in Payam		
# Task	Payam %	
1	49	9.3
2 - 6	39	7.4
7 - 11	4	0.8
12 - 16	3	0.6
Above 16	3	0.6
-----		
UXO Spot / Ongoing Fighting	73	13.9
No Known Hazards	354	67.4