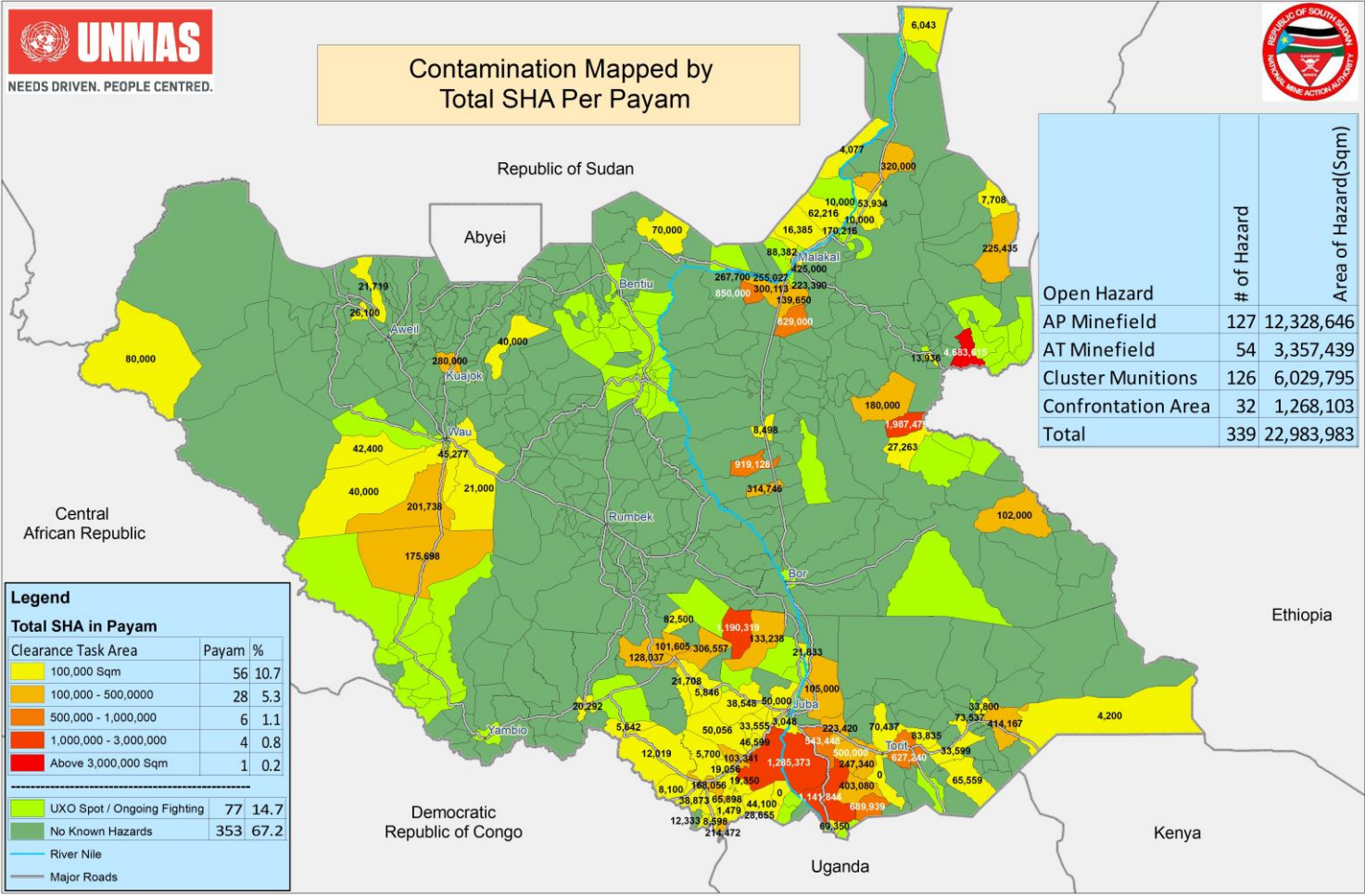


Open Hazardous Areas in South Sudan as of 30 June 2019



Contamination Mapped by Total SHA Per Payam



	# of Hazard	Area of Hazard(Sqm)
Open Hazard	127	12,328,646
AP Minefield	127	12,328,646
AT Minefield	54	3,357,439
Cluster Munitions	126	6,029,795
Confrontation Area	32	1,268,103
Total	339	22,983,983

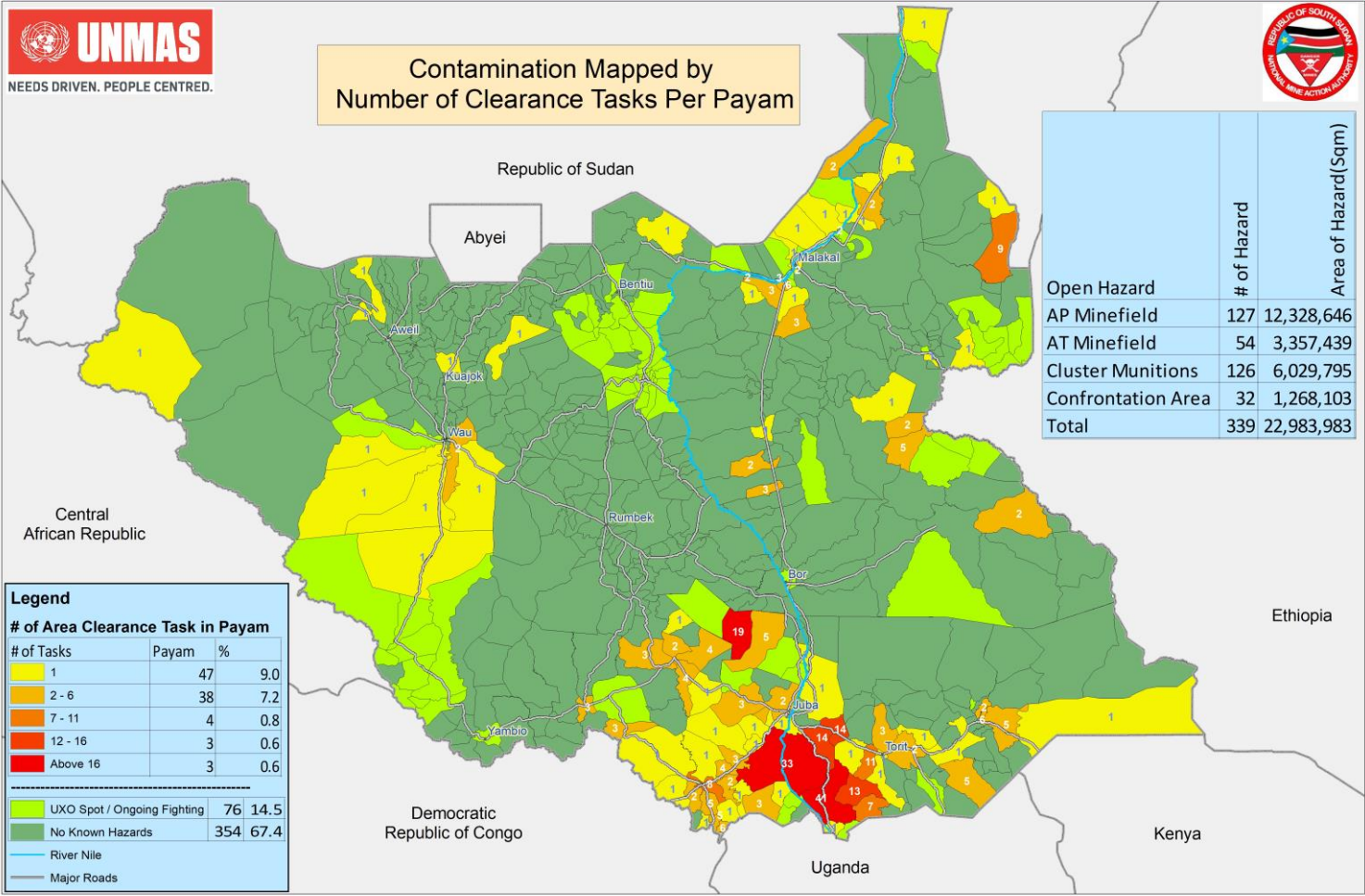
Legend	
Total SHA in Payam	
Clearance Task Area	Payam %
100,000 Sqm	56 10.7
100,000 - 500,000	28 5.3
500,000 - 1,000,000	6 1.1
1,000,000 - 3,000,000	4 0.8
Above 3,000,000 Sqm	1 0.2

UXO Spot / Ongoing Fighting	77 14.7
No Known Hazards	353 67.2
River Nile	
Major Roads	

Open Hazardous Areas in South Sudan as of 30 June 2019



Contamination Mapped by
Number of Clearance Tasks Per Payam



Open Hazard	# of Hazard	Area of Hazard (Sqm)
AP Minefield	127	12,328,646
AT Minefield	54	3,357,439
Cluster Munitions	126	6,029,795
Confrontation Area	32	1,268,103
Total	339	22,983,983

Legend

# of Area Clearance Task in Payam		
# of Tasks	Payam	%
1	47	9.0
2 - 6	38	7.2
7 - 11	4	0.8
12 - 16	3	0.6
Above 16	3	0.6
<hr/>		
UXO Spot / Ongoing Fighting	76	14.5
No Known Hazards	354	67.4
<hr/>		
River Nile		
Major Roads		