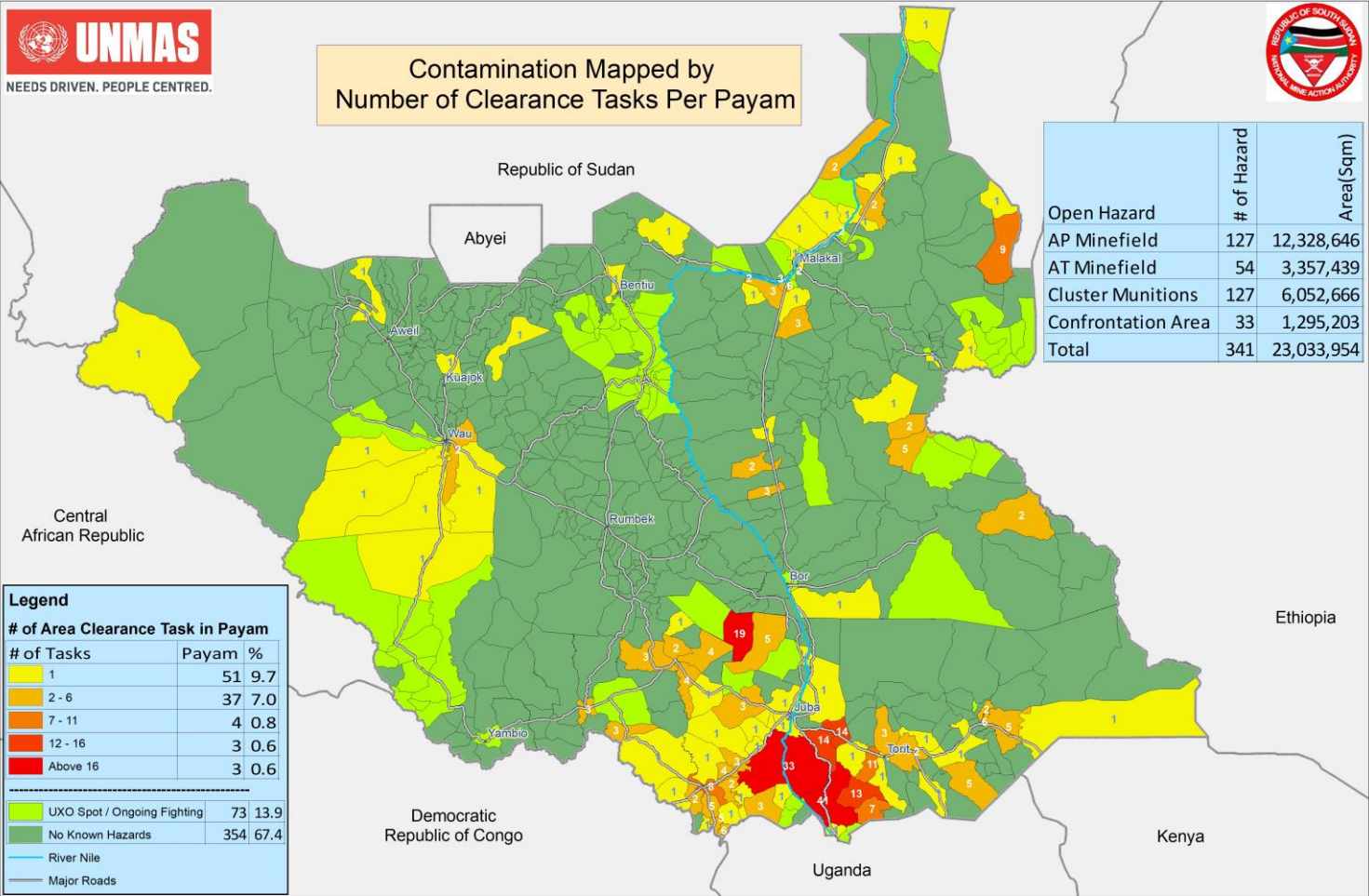


Open Hazardous Areas in South Sudan as of 31 July 2019



Contamination Mapped by Number of Clearance Tasks Per Payam



Open Hazard	# of Hazard	Area (Sqkm)
AP Minefield	127	12,328,646
AT Minefield	54	3,357,439
Cluster Munitions	127	6,052,666
Confrontation Area	33	1,295,203
Total	341	23,033,954

Legend

# of Tasks	Payam	%
1	51	9.7
2 - 6	37	7.0
7 - 11	4	0.8
12 - 16	3	0.6
Above 16	3	0.6

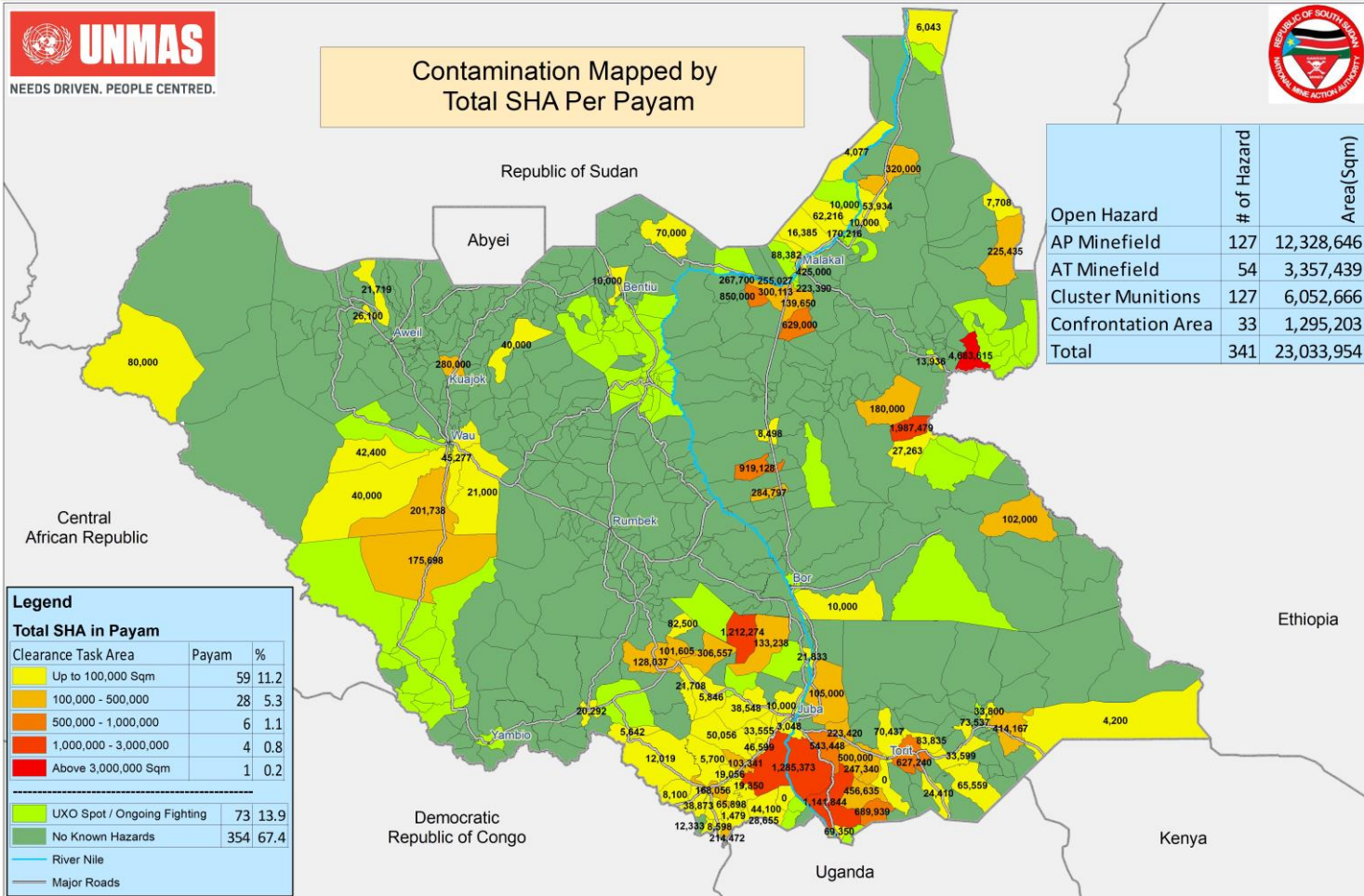
UXO Spot / Ongoing Fighting	73	13.9
No Known Hazards	354	67.4

— River Nile
 — Major Roads

Open Hazardous Areas in South Sudan as of 31 July 2019



Contamination Mapped by Total SHA Per Payam



Open Hazard	# of Hazard	Area (Sqkm)
AP Minefield	127	12,328,646
AT Minefield	54	3,357,439
Cluster Munitions	127	6,052,666
Confrontation Area	33	1,295,203
Total	341	23,033,954

Legend		
Total SHA in Payam		
Clearance Task Area	Payam	%
Up to 100,000 Sqm	59	11.2
100,000 - 500,000	28	5.3
500,000 - 1,000,000	6	1.1
1,000,000 - 3,000,000	4	0.8
Above 3,000,000 Sqm	1	0.2
<hr/>		
UXO Spot / Ongoing Fighting	73	13.9
No Known Hazards	354	67.4
<hr/>		
River Nile		
Major Roads		