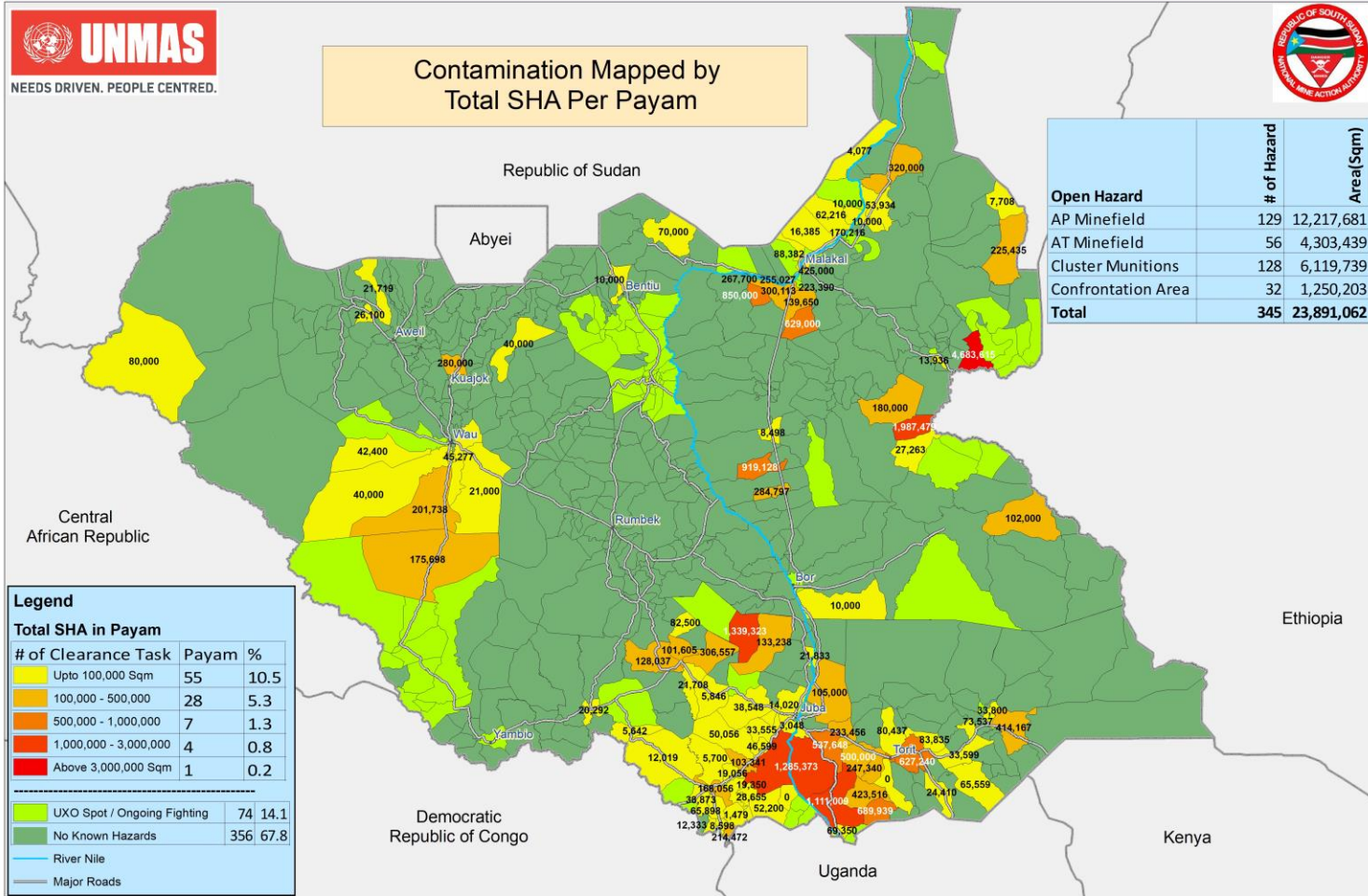


Open Hazardous Areas in South Sudan as of 31 August 2019



Contamination Mapped by
Total SHA Per Payam



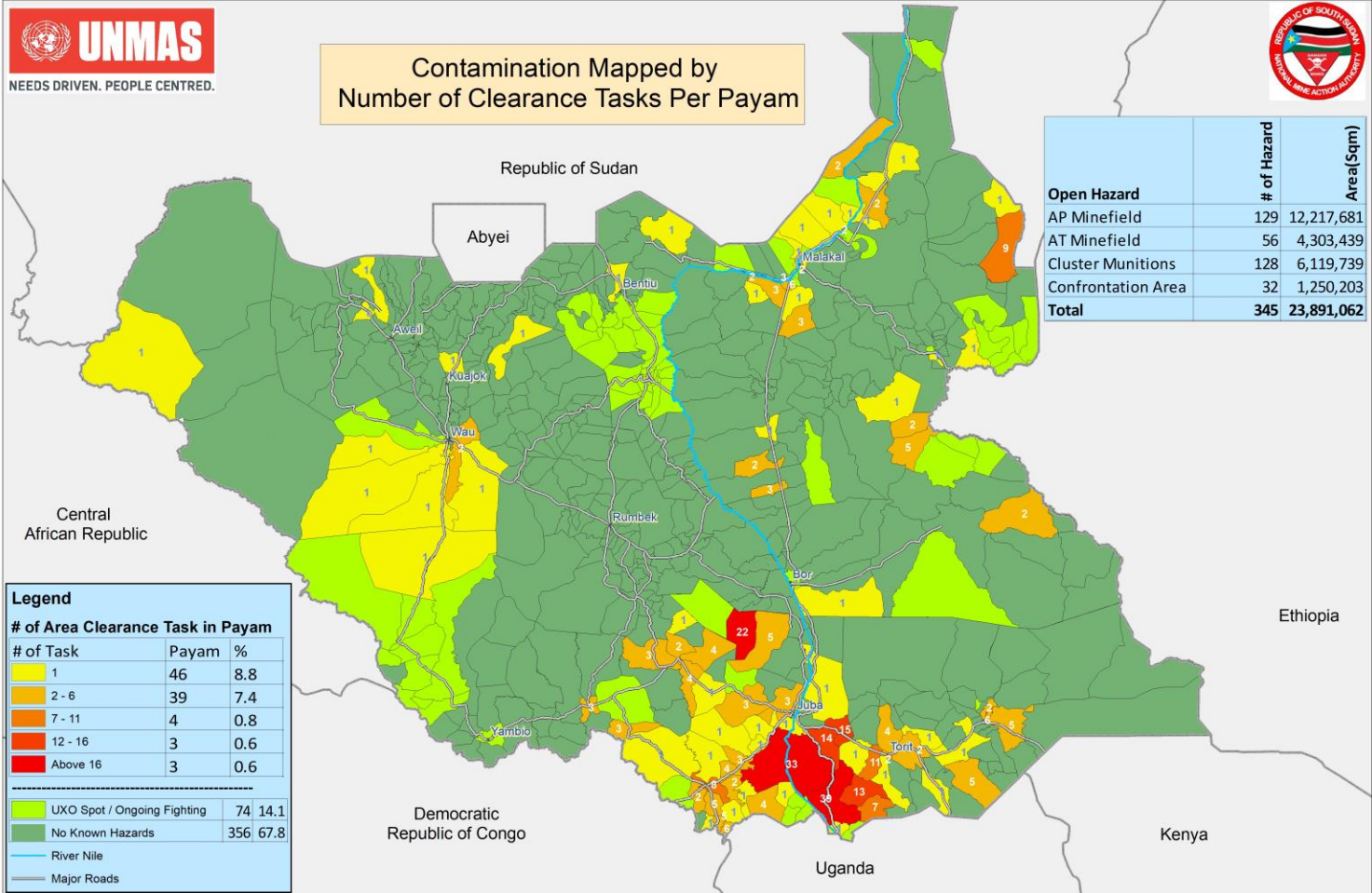
Open Hazard	# of Hazard	Area(Sqm)
AP Minefield	129	12,217,681
AT Minefield	56	4,303,439
Cluster Munitions	128	6,119,739
Confrontation Area	32	1,250,203
Total	345	23,891,062

Legend		
Total SHA in Payam		
# of Clearance Task	Payam	%
Upto 100,000 Sqm	55	10.5
100,000 - 500,000	28	5.3
500,000 - 1,000,000	7	1.3
1,000,000 - 3,000,000	4	0.8
Above 3,000,000 Sqm	1	0.2
<hr/>		
UXO Spot / Ongoing Fighting	74	14.1
No Known Hazards	356	67.8
<hr/>		
River Nile		
Major Roads		

Open Hazardous Areas in South Sudan as of 31 August 2019



Contamination Mapped by Number of Clearance Tasks Per Payam



Legend

# of Task	Payam	%
1	46	8.8
2 - 6	39	7.4
7 - 11	4	0.8
12 - 16	3	0.6
Above 16	3	0.6

UXO Spot / Ongoing Fighting	74	14.1
No Known Hazards	356	67.8

— River Nile
— Major Roads