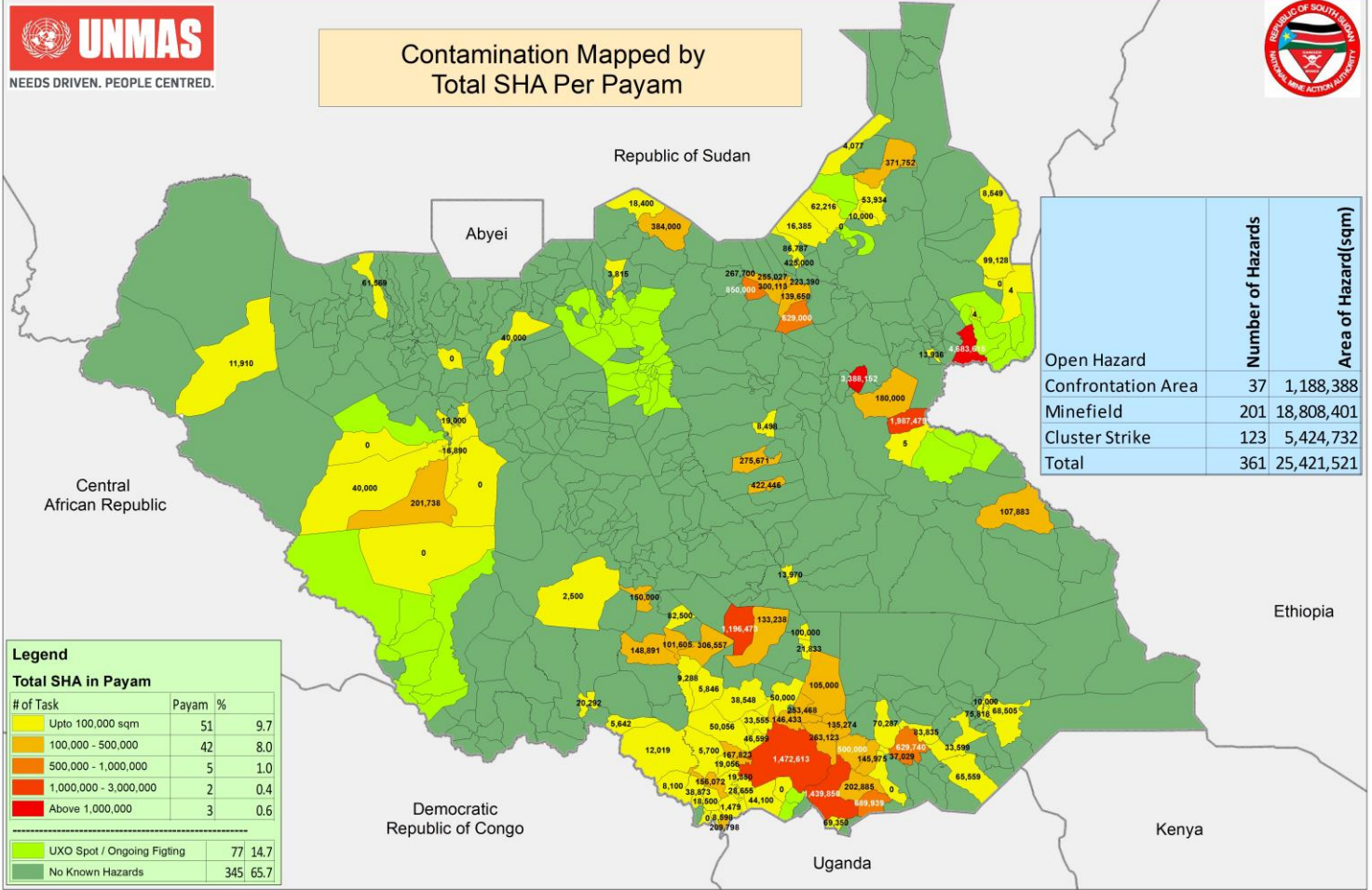


# Open Hazardous Areas in South Sudan as of 28 February 2019



Contamination Mapped by  
Total SHA Per Payam



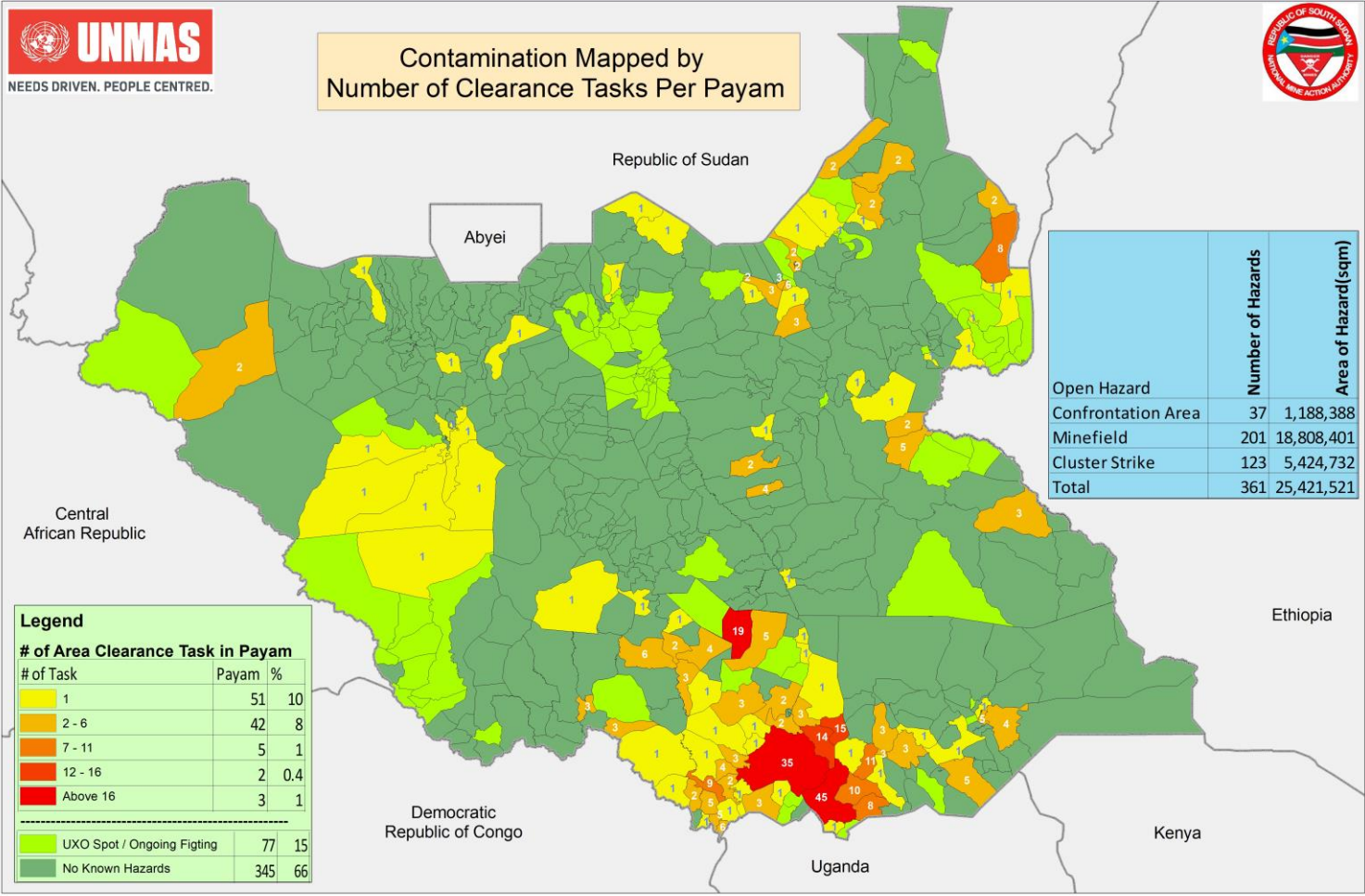
	Number of Hazards	Area of Hazard (sqm)
Open Hazard		
Confrontation Area	37	1,188,388
Minefield	201	18,808,401
Cluster Strike	123	5,424,732
<b>Total</b>	<b>361</b>	<b>25,421,521</b>

Legend		
Total SHA in Payam		
# of Task	Payam	%
Upto 100,000 sqm	51	9.7
100,000 - 500,000	42	8.0
500,000 - 1,000,000	5	1.0
1,000,000 - 3,000,000	2	0.4
Above 1,000,000	3	0.6
<hr/>		
UXO Spot / Ongoing Fighting	77	14.7
No Known Hazards	345	65.7

# Open Hazardous Areas in South Sudan as of 28 Feb 2019



Contamination Mapped by  
Number of Clearance Tasks Per Payam



**Legend**

**# of Area Clearance Task in Payam**

# of Task	Payam	%
1	51	10
2 - 6	42	8
7 - 11	5	1
12 - 16	2	0.4
Above 16	3	1
<hr/>		
UXO Spot / Ongoing Fighting	77	15
No Known Hazards	345	66

	Number of Hazards	Area of Hazard (sqm)
Open Hazard		
Confrontation Area	37	1,188,388
Minefield	201	18,808,401
Cluster Strike	123	5,424,732
<b>Total</b>	<b>361</b>	<b>25,421,521</b>