



# Gender & Mine action

*Making Mine Action more inclusive,  
efficient and effective.*



# Gender Mainstreaming

Socio economic study

Mine Risk Education

Mine Survivor Assistance

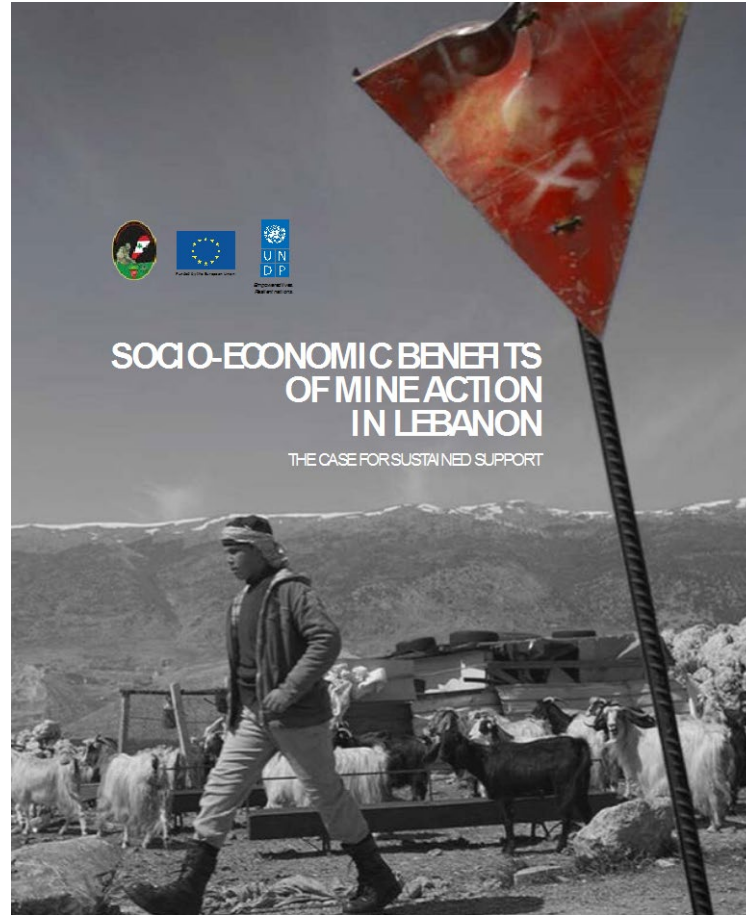
Arab Regional Cooperation Program

Regional School for Humanitarian Demining in Lebanon

LMAC staff



# Socio-economic Benefits of Mine Action





# Distribution of Casualties



CASUALTIES	CHILDREN	ADULTS	TOTAL
FEMALE	5.72%	15.48%	21.2%
MALE	21.28%	57.52%	78.8%
<b>TOTAL</b>	<b>27%</b>	<b>73%</b>	<b>100%</b>

Table 5: Estimated distribution of ERW/Mines casualties across gender and age in Lebanon



# Estimated loss from non market productive capacity

The value of a human life is inestimable and priceless

Numerous methods attribute a monetary value to nonmarket activities

Predominantly some women's, non-market activity includes housework, childcare, as well as production for own use.

.

Non market activities represent a significant economic output.

Measurement methodologies and choices might be arbitrary, yet they come closer to the reality than the omission of nonmarket activity in national economic statistics



# Opportunity cost of non market value

**Performing nonmarket activity** has an opportunity cost.

In the case of a woman performing long hours of household work for example, the opportunity cost for that woman is the cost of not entering the formal labor market, or the cost of not outsourcing to a specialist (e.g. cook, restaurant) or a generalist (e.g. housekeeper), as well as the cost of using (and depleting) own material to perform non-market activities (e.g. home cooking).



# ESTIMATED TOTAL LOSS OF PRODUCTIVITY AND WELFARE OVER A LIFETIME

GENDER	AGE	LOSS OF PRODUCTIVE CAPACITY (USD)	LOSS OF WELFARE (USD)	TOTAL LOSS OVER LIFETIME (USD)
FEMALE	CHILDREN	287,603 \$	446,165 \$	<b>733,768 \$</b>
	ADULTS	267,928 \$	351,992 \$	<b>619,920 \$</b>
MALE	CHILDREN	456,460 \$	708,115 \$	<b>1,164,575 \$</b>
	ADULTS	425,233 \$	558,652 \$	<b>983,886 \$</b>

Table 10: Average loss (productivity and welfare) over a lifetime for one mine/ERW fatal accident



# Mine Risk Education



# LMAC Risk Education Initiatives

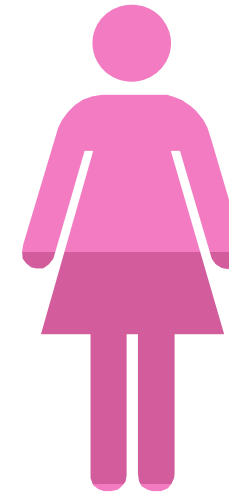


The number of direct targets this year is as follows:

TARGETED INDIVIDUALS	
Women	men
18,207	20,207
<b>TOTAL = 38414</b>	

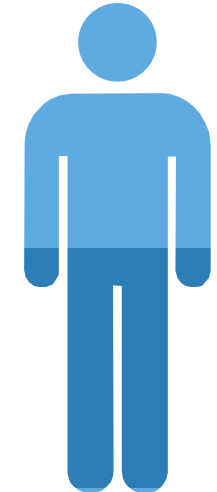
To these figures the number of "indirect targets" must be added who include among others individuals who received text messages, received awareness leaflets, or were active on social media.

Women



47%

Men

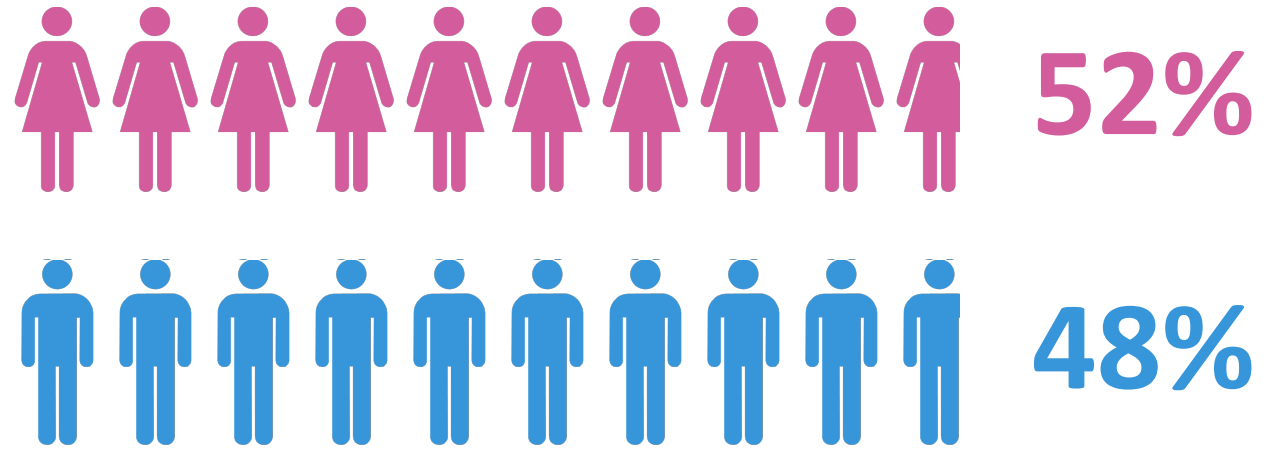


53%



# Risk Education Events in cooperation with the National MRE Committee and Clearance organizations

**263** Risk education Activities across schools



	Men	Women
Series 1	4,758.00	5,096.00





# Mine Survivor Assistance



LMAC considers that survivors are not the only victims of mines their family and dependents are severely affected.

Planned Activities in 2019:

Job fair for people with disabilities including mine survivors and their family.

Cooperation with the UN Global Compact for potential matching of job.





# Arab Regional Cooperation Program

# Gender and Diversity in Mine Action Workshop in Cooperation with GICHD

RSHEFL on the 17th and 18th of July 2018

## with GICHD

### *Workshop objective*

To enable NMAA's in the Arab programs to benefit from the gender and diversity in their societies to achieve the goals of their mine action programs.



Libya



Iraq



Palestine



Yemen



Somalia



Sudan





# Regional School for Humanitarian Demining in Lebanon

	TRAINEE'S BACKGROUND		TRAINEE'S NATIONALITY		TRAINEE'S GENDER		TOTAL NUMBER
	MILITARY	CIVILIAN	LEBANESE	OTHER	FEMALE	MALE	
EOD	33	41	74	0	1	73	74
	44.59%	55.41%	100%	0%	1.35%	98.65%	
NTS	2	20	6	16	6	16	22
	9.09%	90.91%	27.27%	72.73%	27.27%	72.73%	
MRE	7	31	38	0	18	20	38
	18.42%	81.58%	100%	0%	47.36%	52.64%	
MVA	0	39	39	0	3	36	39
	0%	100%	100%	0%	7.69%	92.31%	
SUB-TOTAL	42	131	157	16	28	145	173
	24.27%	75.73%	90.75%	9.25%	16.18%	83.82%	



# LMAC Staff

LMAC staff include 15 women  
UNDP project in LMAC includes 3  
women out of 10 including the  
project manager, the MRE Assistant  
and the MVA assistant.





# Thank you

*Making Mine Action more inclusive,  
efficient and effective.*

